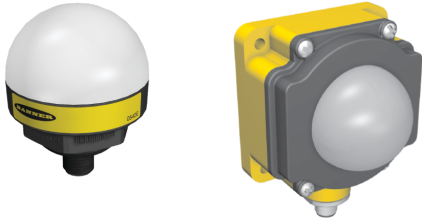


EZ-LIGHT™ Indicators — 85-130V ac



AC-operated, multi-color, general-purpose indicators

For the latest technical information about this product, including specifications, dimensions, and wiring, see www.BannerEngineering.com.



- Rugged, cost-effective and easy-to-install indicators available in K50 or K80 housing style
- Illumination provides easy-to-see operator guidance and equipment status indication
- Compact devices are completely self-contained — no controller needed
- 85 to 130V ac operation
- Displays 3 colors
- Immune to ambient light, EMI and RFI interference



Call Factory for more information.

Models

Model	Construction	Connection*	LED Function**	Inputs
K50LGRYA120Q	50 mm dome/ 30 mm mount polycarbonate	5-pin Micro QD	3 Color: Green, Red, Yellow	85–130V ac
K80LGRYA120Q	50 mm dome/Flat or DIN-mount polycarbonate			

* Integral QD models are listed.

- For 150 mm PVC pigtail with QD, replace **Q** with **QP** in model number (example, **K50LGRYA120QP**).
- For 2 m (6.5') PVC cable, omit suffix **Q** from model number (example, **K50LGRYA120**).
- A model with a QD requires a mating cable (see [5-pin Micro-Style Cordsets with Shield](#) on page 2)

** Contact factory for other colors and color combinations.

Specifications

Supply Voltage and Current

85 to 130V ac @ 15 mA max.

Supply Protection Circuitry

Protected against transient voltages

Indicators

LEDs are independently selected: Green, Red, or Yellow.

Input Response Time

Indicator ON/OFF: 1 ms max.

Environmental Rating

Rated IEC IP67. K50L models fully encapsulated; K80L has encapsulated electronics only. K50L QD models meet IP69K, per DIN 40050-9; cabled models also meet IP69K if the cable and cable entrance are protected from high-pressure spray.

Connections

5-pin Micro-style integral QD (Q), 150 mm (6") pigtail QD (QP), or 2 m (6.5') integral cable, depending on model

K80L models: terminal-wired models available for use with bulk cable; compression fitting optional. Contact Factory for cable information.

Operating Conditions

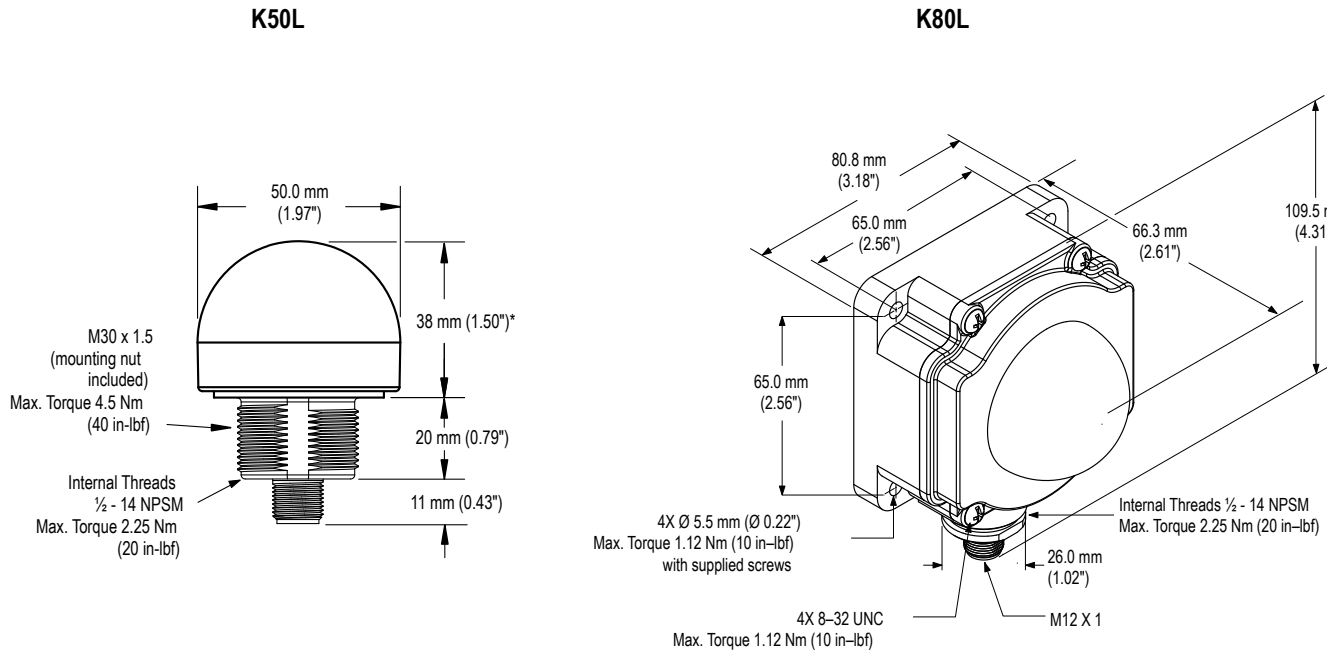
-40° to +50° C (-40° to +122° F)

90% @ 55° C max. relative humidity (non-condensing)

Certifications

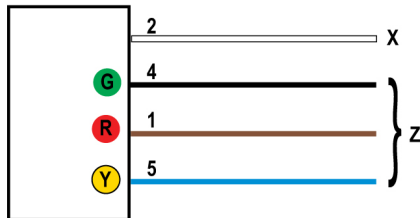


Dimensions

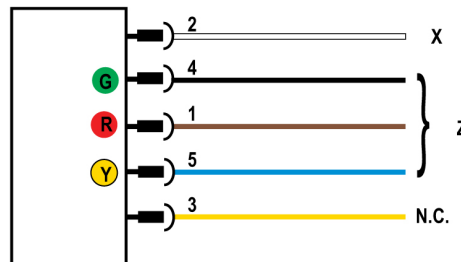


Wiring

Cabled Models



QD Models



Key:

- 1 = Brown
- 2 = White
- 3 = Yellow
- 4 = Black
- 5 = Blue
- G = Green
- R = Red
- Y = Yellow
- X = V ac Neutral
- Z = Input 85 to 130V ac
- N.C. = Not Used

5-pin Micro-Style Cordsets with Shield

5-pin Micro-Style Cordsets with Shield (straight connector)

- MQVR3S-506, 2 m (6.5')
- MQVR3S-515, 5 m (15')
- MQVR3S-530, 9 m (30')

5-pin Micro-Style Cordsets with Shield (right-angle connector)

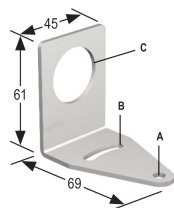
- MQVR3S-506RA, 2 m (6.5')
- MQVR3S-515RA, 5 m (15')
- MQVR3S-530RA, 9 m (30')

Mounting Brackets

All measurements in mm

SMB30A

- Right-angle bracket with curved slot for versatile orientation
- Clearance for M6 (1/4") hardware
- 30 mm mounting hole
- 12-ga. stainless steel

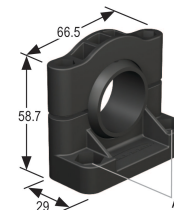


Hole center spacing: A to B=40.0

Hole size: A=∅ 6.3, B=27.3 x 6.3, C=∅ 30.5

SMB30SC

- Swivel bracket with 30 mm mounting hole
- Black reinforced thermo-plastic polyester
- Stainless steel mounting and swivel locking hardware included

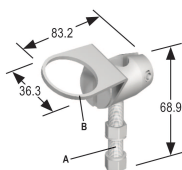


Hole center spacing: A to B=50.8

Hole size: A=∅ 7.0

SMB30FA

- Swivel bracket with tilt and pan movement for precision adjustment
- 30 mm mounting hole
- 12-ga. 304 stainless steel

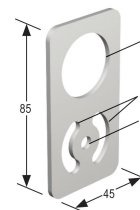


A=3/8 - 16 x 50.8

Hole size: B=∅ 30.1

SMBAMS30P

- Flat SMBAMS series bracket
- 30 mm mounting hole
- Articulation slots for 90+° rotation
- 12-ga. 300 series stainless steel

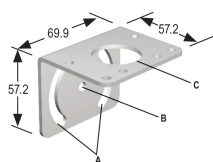


Hole center spacing: A=26.0, A to B=13.0

Hole size: A=26.8 x 7.0, B=∅ 6.5, C=∅ 31.0

SMB30MM

- 12-ga. stainless steel bracket with curved mounting slots for versatility and orientation
- Clearance for M6 (1/4") hardware
- 30 mm mounting hole

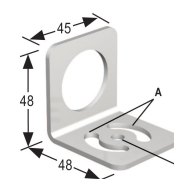


Hole center spacing: A=51.0, A to B=25.4

Hole size: A=42.6 x 7.0, B=∅ 6.4, C=∅ 30.1

SMBAMS30RA

- Right-angle SMBAMS series bracket
- 30 mm mounting hole
- Articulation slots for 90+° rotation
- 12-ga. cold rolled stainless steel

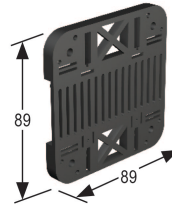


Hole center spacing: A=26.0, A to B=13.0

Hole size: A=26.8 x 7.0, B=∅ 6.5, C=∅ 31.0

For K80L**SMBDX80D**

- DIN-mount bracket for K80L models, mounts on 35 mm DIN rail
- Hardware included to mount to K80L housing
- Black reinforced thermoplastic

**Contact Us**

For more information: Contact your local Banner representative or Banner Corporate Offices around the world.

Corporate Headquarters: Banner Engineering Corp. 9714 Tenth Ave. North, Mpls., MN 55441, Tel: 763-544-3164, www.bannerengineering.com, sensors@bannerengineering.com

Europe: Banner Engineering Europe Park Lane, Culliganlaan 2F, Diegem B-1831 BELGIUM, Tel: 32-2 456 07 80, Fax: 32-2 456 07 89, www.bannereurope.com, mail@bannereurope.com

Latin America: Contact Banner Engineering Corp. (US) or e-mail **Mexico:** mexico@bannerengineering.com; or **Brazil:** brasil@bannerengineering.com

Asia:

Banner Engineering China Shanghai Rep Office Rm. G/H/I, 28th Flr. Cross Region Plaza No. 899, Lingling Road, Shanghai 200030 CHINA, Tel: 86-21-54894500, Fax: 86-21-54894511, www.bannerengineering.com.cn, sensors@bannerengineering.com.cn

Banner Engineering Japan Cent-Urban Building 305 3-23-15, Nishi-Nakajima Yodogawa-Ku, Osaka 532-0011 JAPAN, Tel: 81-6-6309-0411, Fax: 81-6-6309-0416, www.bannerengineering.co.jp, mail@bannerengineering.co.jp

Banner Engineering Asia — Taiwan Neihu Technology Park 5F-1, No. 51, Lane 35, Jihu Rd., Taipei 114 TAIWAN, Tel: 886-2-8751-9966, Fax: 886-2-8751-2966, www.bannerengineering.com.tw, info@bannerengineering.com.tw

Banner Engineering India Pune Head Quarters Office, No. 1001 Sai Capital, Opp. ICC Senapati Bapat Road, Pune 411016 INDIA, Tel: 91-20-66405624, Fax: 91-20-66405623, www.bannerengineering.co.in, india@bannerengineering.com



Warranty: Banner Engineering Corporation warrants its products to be free from defects for a period of one year. Banner Engineering Corporation will repair or replace, free of charge, any product of its manufacture found to be defective at the time it is returned to the factory during the warranty period. This warranty does not cover damage or liability for the improper application of Banner products. This warranty is in lieu of any other warranty either expressed or implied.