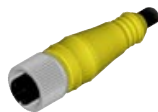


Micro-Change® (M12) Moulded Connectors



Male Connector



- 1 Brown
- 3 Blue
- 4 Black

5 Pole/3 Wire



- 1 Brown
- 2 White
- 3 Blue
- 4 Black

5 Pole/4 Wire



- 1 Brown
- 2 White
- 3 Blue
- 4 Black
- 5 Grey

5 Pole/5 Wire



- 1 White
- 2 Brown
- 3 Green
- 4 Yellow
- 5 Grey
- 6 Pink
- 7 Blue
- 8 Red

8 Pole

Cable Length (m)

WIRING CONFIGURATION

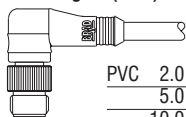
WIRING CONFIGURATION

Micro-Change® (M12) Straight



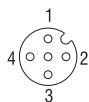
Cable	Length (m)	WIRING CONFIGURATION			WIRING CONFIGURATION		
		5 Pole/3 Wire	5 Pole/4 Wire	5 Pole/5 Wire	8 Pole	8 Pole	8 Pole
PVC	2.0	803006E03M020	804006E03M020	805006E03M020			
	5.0	803006E03M050	804006E03M050	805006E03M050			
	10.0	803006E03M100	804006E03M100	805006E03M100			
PUR	2.0	803006P03M020	804006P03M020	805006P03M020	808006P02M020		
	5.0	803006P03M050	804006P03M050	805006P03M050	808006P02M050		
	10.0	803006P03M100	804006P03M100	805006P03M100	808006P02M100		
SJTO	2.0	803006S20M020	804006S20M020	805006S26M020			
	5.0	803006S20M050	804006S20M050	805006S26M050			
	10.0	803006S20M100	804006S20M100	805006S26M100			

Micro-Change® (M12) 90°



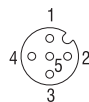
PVC	2.0	803007E03M020	804007E03M020	805007E03M020			
	5.0	803007E03M050	804007E03M050	805007E03M050			
	10.0	803007E03M100	804007E03M100	805007E03M100			
PUR	2.0	803007P03M020	804007P03M020	805007P03M020	808007P02M020		
	5.0	803007P03M050	804007P03M050	805007P03M050	808007P02M050		
	10.0	803007P03M100	804007P03M100	805007P03M100	808007P02M100		
SJTO	2.0	803007S20M020	804007S20M020	805007S26M020			
	5.0	803007S20M050	804007S20M050	805007S26M050			
	10.0	803007S20M100	804007S20M100	805007S26M100			

Micro-Change® (M12) Field Attachable Connectors



- 1 Brown
- 2 White
- 3 Blue
- 4 Black

4 Pole



- 1 Brown
- 2 White
- 3 Blue
- 4 Black
- 5 Grey

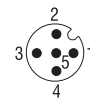
5 Pole

WIRING CONFIGURATION



- 1 Brown
- 2 White
- 3 Blue
- 4 Black

4 Pole



- 1 Brown
- 2 White
- 3 Blue
- 4 Black
- 5 Grey

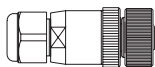
5 Pole

WIRING CONFIGURATION

Female Attachables

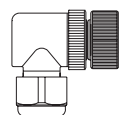
Gland size

Micro-Change® (M12) Straight



PG7	8A4000-315	8A5000-315
PG9	8A4000-325	8A5000-325

Micro-Change® (M12) 90°

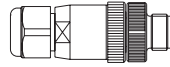


PG7	8A4001-315	8A5001-315
-----	------------	------------

Male Attachable

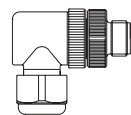
Gland size

Micro-Change® (M12) Straight



PG7	8A4006-315	8A5006-315
PG9	8A4006-325	8A5006-325

Micro-Change® (M12) 90°



PG7	8A4007-315	8A5007-315
-----	------------	------------