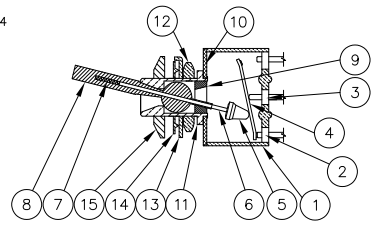
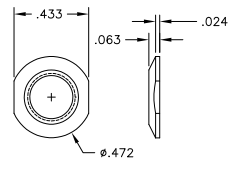


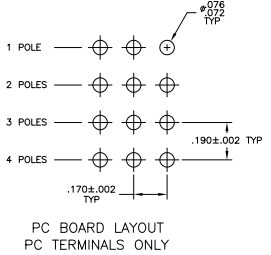
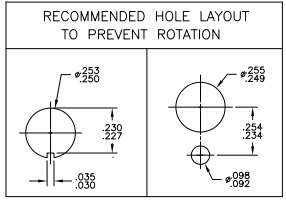
Materials		
No.	Component name	Base material / Finish
1	Housing	ALKYD, GREEN, UL94 V-0
2	End terminal	silver clad copper alloy / 5 microinches min. gold
3	Center terminal	copper alloy / 5 microinches min. gold
4	Rocker contact	silver clad copper alloy / 5 microinches min. gold
5	Actuator	Phenol resin, UL94 HB, black
6	Plunger	stainless steel
7	Spring	music wire
8	Leaflet	brass / 200 microinches min. bright nickel, electrodeposited
9	Retainer	Polyamide, UL94 HB, black
10	Frame	200 microinches min. bright nickel, electrodeposited
11	Bushing	zinc / 100 microinches min. nickel electrodeposited over 200 microinches min. copper
12	Mounting nut	brass / 200 microinches min. bright nickel, electrodeposited
13	Locating ring	cold rolled steel / 200 microinches min. bright nickel, electrodeposited
14	Internal tooth lockwasher	steel / 200 microinches min. bright nickel, electrodeposited
15	Dress Nut	brass / 200 microinches min. bright nickel, electrodeposited



Specifications (see note 3)	
Current rating UL & CSA	6A @ 125 VAC (resistive) 3A @ 250 VAC (resistive)
Termination resistance	40 @ 25 VDC (resistive) 20 miliohms max @ 2-4 VDC, 1A
Insulation resistance	1,000 megohms min.
Withstanding voltage	1,000 VAC
Travel	24 +/- 2 degrees
Actuation force	0.5 to 1.5 lbf
Operating temperature	-20C to +85C
Storage temperature	-40C to +85C
Contact timing	break before make
Terminal seal	epoxy
Durability	Parameter 2 Position 3 Position Momentary
mechanical (no load)	150,000 100,000 80,000
250 VAC (3A resistive)	80,000 60,000 60,000
125 VAC (6A resistive)	80,000 60,000 60,000
250 VDC (4A resistive)	60,000 50,000 40,000

DRESS NUT

NOT TO SCALE



PC BOARD LAYOUT
PC TERMINALS ONLY

Tyco P/N	Alco P/N	Poles	Throws	Function	Terminal	Toggle Finish	Diagram 1	Diagram 2	Diagram 3	Comments
3-1571925-4	MTF426N04	4	2	ON ON	Wire lug	bright nickel	2-3, 5-6, 8-9, 11-12	---	---	2-1, 5-4, 8-7, 11-10
3-1571925-3	MTF406N04	4	2	ON ON	Wire lug	matte nickel	2-3, 5-6, 8-9, 11-12	---	---	2-1, 5-4, 8-7, 11-10
3-1571925-2	MTF326D04	3	2	ON ON	Wire lug	bright nickel	2-3, 5-6, 8-9	---	---	2-1, 5-4, 8-7
3-1571925-1	MTF306D04	3	2	ON ON	Wire lug	matte nickel	2-3, 5-6, 8-9	---	---	2-1, 5-4, 8-7
3-1571925-0	MTF26SA04	1	3	(ON) ON (ON)	Wire lug	bright nickel	5-6	5-3	---	5-1 note 6
2-1571925-9	MTF226S04	2	2	(ON) OFF (ON)	Wire lug	bright nickel	2-3, 5-6	Off	---	2-1, 5-4
2-1571925-8	MTF226R04	2	2	ON (ON)	Wire lug	bright nickel	2-3, 5-6	---	---	2-1, 5-4
2-1571925-7	MTF226PA04	1	3	ON ON ON	Wire lug	bright nickel	5-6	5-3	---	5-1 note 6
2-1571925-6	MTF226P04	2	2	ON OFF ON	Wire lug	bright nickel	2-3, 5-6	Off	---	2-1, 5-4
2-1571925-5	MTF226N04	2	2	ON ON	Wire lug	bright nickel	2-3, 5-6	---	---	2-1, 5-4
OBSOLETE	2-1571925-4	2	1	ON OFF	PC	bright nickel	2-3, 5-6	---	---	OFF
OBSOLETE	2-1571925-3	2	1	ON OFF	Wire lug	bright nickel	2-3, 5-6	---	---	OFF
2-1571925-2	MTF206T04	2	2	ON OFF (ON)	Wire lug	matte nickel	2-3, 5-6	Off	---	2-1, 5-4
2-1571925-1	MTF206SA04	1	3	(ON) ON (ON)	Wire lug	matte nickel	5-6	5-3	---	5-1 note 6
2-1571925-0	MTF206S04	2	2	(ON) OFF (ON)	Wire lug	matte nickel	2-3, 5-6	Off	---	2-1, 5-4
1-1571925-9	MTF206R04	2	2	ON (ON)	Wire lug	matte nickel	2-3, 5-6	---	---	2-1, 5-4
1-1571925-8	MTF206PA04	1	3	ON ON ON	Wire lug	matte nickel	5-6	5-3	---	5-1 note 6
1-1571925-7	MTF206P04	2	2	ON OFF ON	Wire lug	matte nickel	2-3, 5-6	Off	---	2-1, 5-4
1-1571925-6	MTF206N04	2	2	ON ON	Wire lug	matte nickel	2-3, 5-6	---	---	2-1, 5-4
OBSOLETE	1-1571925-5	2	1	ON OFF	PC	matte nickel	2-3, 5-6	---	---	OFF
OBSOLETE	1-1571925-4	2	1	ON OFF	Wire lug	matte nickel	2-3, 5-6	---	---	OFF
1-1571925-3	MTF126G04	1	2	(ON) OFF (ON)	Wire lug	bright nickel	2-3	Off	---	2-1
1-1571925-2	MTF126F04	1	2	ON (ON)	Wire lug	bright nickel	2-3	---	---	2-1
1-1571925-1	MTF126E04	1	2	ON OFF ON	Wire lug	bright nickel	2-3	Off	---	2-1
1-1571925-0	MTF126D04	1	2	ON ON	Wire lug	bright nickel	2-3	---	---	2-1
OBSOLETE	1571925-9	1	1	ON OFF	PC	bright nickel	2-3	---	---	OFF
OBSOLETE	1571925-8	1	1	ON OFF	Wire lug	bright nickel	2-3	---	---	OFF
1571925-7	MTF106H04	1	2	ON OFF (ON)	Wire lug	matte nickel	2-3	Off	---	2-1
1571925-6	MTF106G04	1	2	(ON) OFF (ON)	Wire lug	matte nickel	2-3	Off	---	2-1
1571925-5	MTF106F04	1	2	ON (ON)	Wire lug	matte nickel	2-3	---	---	2-1
1571925-4	MTF106E04	1	2	ON OFF ON	Wire lug	matte nickel	2-3	Off	---	2-1
1571925-3	MTF106D04	1	2	ON ON	Wire lug	matte nickel	2-3	---	---	2-1
OBSOLETE	1571925-2	1	1	ON OFF	PC	matte nickel	2-3	---	---	OFF
OBSOLETE	1571925-1	1	1	ON OFF	Wire lug	matte nickel	2-3	---	---	OFF

- NOTES:
- TERMINAL NUMBERS ARE FOR REFERENCE ONLY AND DO NOT APPEAR ON THE SWITCHES.
 - EACH SWITCH SUPPLIED WITH THE FOLLOWING MOUNTING HARDWARE:
 - 1/4-40 UNS-2B HEX NUT
 - INTERNAL TOOTH LOCKWASHER
 - LOCATING RING
 - DRESS NUT
 - SWITCHES TESTED TO AND MEET THE REQUIREMENTS OF UL 61058-1A. SWITCHES FOR APPLIANCES SWITCHES WILL ALSO BE TESTED TO AND MEET THE REQUIREMENTS OF TYCO 102-2469, REV 0, MINIATURE SWITCH QUALIFICATION REQUIREMENTS.
 - SWITCHES ARE PENDING UL RECOGNITION TO US AND CANADIAN STANDARDS.
 - WIRE LUG CONTACTS WILL ACCEPT 2 #20 AWG SOLID OR STRANDED WIRES.
 - CUSTOMER INSTALLED EXTERNAL JUMPER BETWEEN TERMINALS 2 AND 4 REQUIRED FOR 1 POLE 3 THROW FUNCTION.
 - SWITCHES ARE MARKED PER TYCO SPEC 202-37 WITH ALCO BENEATH TYCO AS SHOWN.
 - ALL MATERIALS AND FINISHES SHALL COMPLY WITH EU DIRECTIVE 2002/95/EC OF 27/JAN/2003 (ROHS).

THIS DRAWING IS A CONTROLLED DOCUMENT. THE COPY CONTROLLED BY: **Alco**

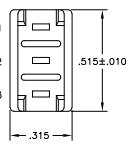
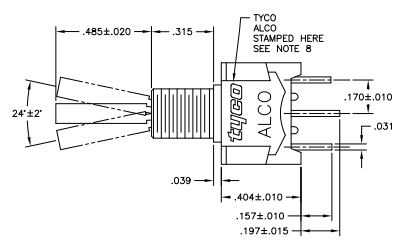
DATE: 06/05/05
 BY: MZ
 TITLE: ALCO GREEN SERIES TOGGLE SWITCH MTF VERTICAL MOUNT

REVISIONS: A1 00779 G-1571925

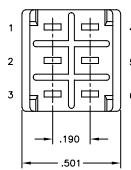
CUSTOMER DRAWING: 4:1 1 3 1 B

THIS DRAWING IS UNPUBLISHED
 ALL RIGHTS RESERVED
 © 2015 TYCO ELECTRONICS CORPORATION

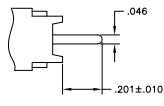
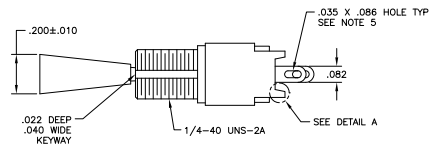
REVISONS		DATE	BY	APP'D
AD	00			



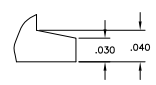
MTF106



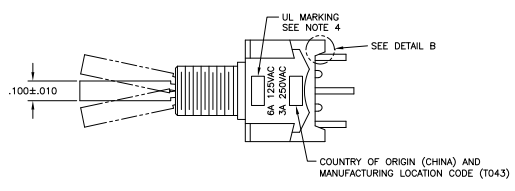
MTF206



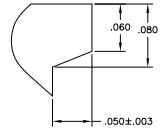
PC TERMINAL



DETAIL A
SCALE 16:1

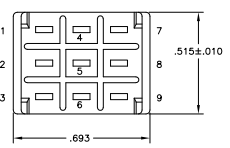
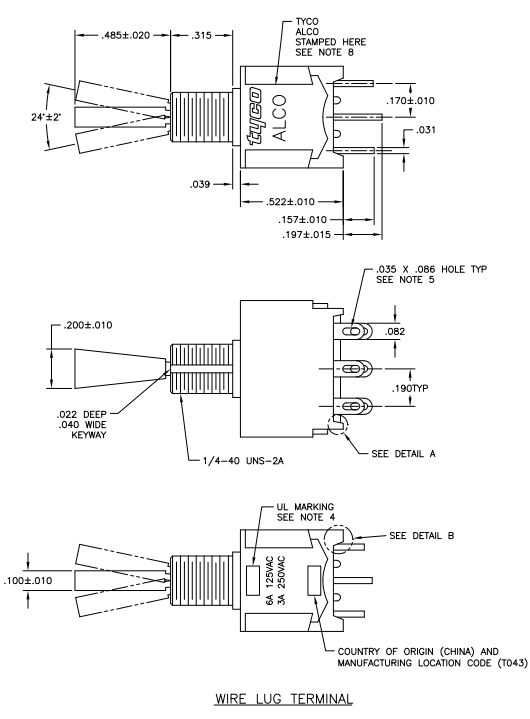


WIRE LUG TERMINAL

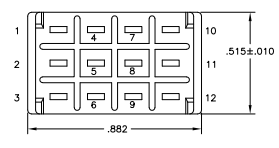


DETAIL B
SCALE 16:1

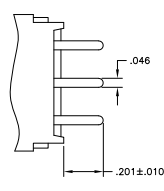
THIS DRAWING IS A CONTROLLED DOCUMENT		REV	GROUP	DATE	BY	APP'D
DRAWING NO.		REV	GROUP	DATE	BY	APP'D
DESCRIPTION		REV	GROUP	DATE	BY	APP'D
MATERIAL		REV	GROUP	DATE	BY	APP'D
QUANTITY		REV	GROUP	DATE	BY	APP'D
DRAWN BY		REV	GROUP	DATE	BY	APP'D
CHECKED BY		REV	GROUP	DATE	BY	APP'D
APPROVED BY		REV	GROUP	DATE	BY	APP'D
CUSTOMER DRAWING		REV	GROUP	DATE	BY	APP'D



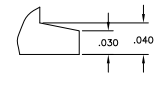
MTA306



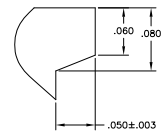
MTA406



PC TERMINAL



DETAIL A
SCALE 16:1



DETAIL B
SCALE 16:1

THIS DRAWING IS A CONTROLLED DOCUMENT.		REV	DATE	GROUP	BY	CHKD	DATE
REVISIONS		AD	00				
DESCRIPTION		ALCOSWITCH GREEN SERIES TOGGLE SWITCH MTF VERTICAL MOUNT					
MATERIAL		ALUMINUM					
FINISH		NATURAL ANODIZED					
SPECIFICATION		MIL-STD-2030					
DRAWN BY		M. P. ZITTO					
CHECKED BY		M. P. ZITTO					
APPROVED BY							
DATE		00779		1571925		REVISED TO	
CUSTOMER DRAWING		A1		G=		REV 3	