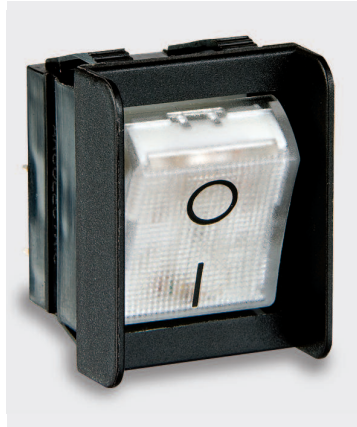


1550 Standard & 1350 High Inrush Switches 150A to EN61058-1 and 16A 250Vac

With Guard or Cover



- ▶ Standard rocker switch
- ▶ 1350/53 high inrush
- ▶ Choice of switching circuits including 3 position
- ▶ Push-on, solder and PCB terminals
- ▶ Choice of bezel styles
- ▶ Choice of panel cut outs
- ▶ Matching indicator
- ▶ Double pole
- ▶ Option with guard & cover
- ▶ Bezel size 'G' style 32.0 x 25.0



In house test



In house test



1550 Series 16(4)A 250Vac T125

UL CSA 16A 250Vac, (2 posn) 250Vac 1hp, 125Vac 1/2hp, (3 posn) 250 Vac 1/2hp, 125Vac 1/4hp.
UL 85°C, file E45221, CSA file LR10990.

10A 24Vdc.

1350 series 16(4)A 250Vac T85 1E4 (10,000 Ops.)
On request 16(6)A 250Vac T125 5E4 (50,000 Ops.)
150A Inrush to EN61058-1.

UL CSA 20A 250Vac 1hp, 125Vac 1/2hp.
UL 72Vdc 7A, 36Vdc 14A.
UL 85°C, file E45221, CSA file LR10990.

20A 24Vdc

RoHS compliant

3mm contact gap except if marked μ .
Technical data on pages 4 & 5 (switches), 6 (indicators).

C 1553 A G ---

TERMINAL FUNCTION ROCKER BODY PRINT, COLOUR, VOLTAGE ETC

TERMINAL	FUNCTION	ROCKER
C 6.3 x 0.8	Approvals & ratings vary with function ON OFF Switches - ON when pressed over terminal 1	A Softline Matt
H 4.8 x 0.8*	Standard 1550 High Inrush 1350 1551 <small>HP rating N/A</small> 1552 <small>HP rating N/A</small>	V Curved
K 2.8 x 0.8*	1553 1353 1560 μ 1561 μ <small>HP rating N/A</small> 1562 μ <small>In house tests only</small> 1570 μ <small>125V & 250V 1/2 HP H terminal rated T100 only</small> 1571 μ <small>HP rating N/A H terminal rated T100 only</small> 1572 μ <small>HP rating N/A H terminal rated T100 only</small>	P Lit window Matt
T Solder	ON - OFF ON - OFF (momentary ON) ON - OFF (momentary OFF) ON - OFF Lit ON - ON ON - ON (momentary 1 side) 2 Circuit ON - ON ON - OFF - ON ON - OFF - ON (momentary 1 side) ON - OFF - ON (momentary 2 sides)	
U Right angle T Solder (Not DP)		
X PCB 0.8Sq*		

*Contact sales for details on 1350 series



C1550AH ---

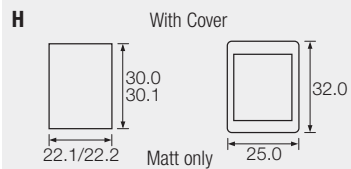
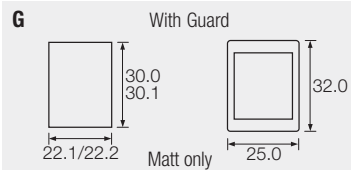


C1553AH ---

rocker
switches

BODY

Panel cut-out * Bezel
Cut-outs must be punched in the direction of insertion



OPTIONS

Finish Matt is standard.

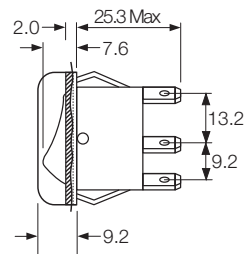
Colour Call sales for custom colours.
A full range is available for large orders.

Legend printing Select from the examples or
call sales for custom legends.

Lamp voltage Call sales for details.

For all options call sales.

DIMENSIONS (mm)



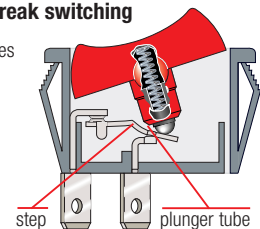
Terminal spacing - Poles 10.2 between centres

Panel thickness
G, H 0.75 to 2.5mm

* For cut-out details on
momentary switches call sales.

1350 High inrush, positive break switching

The 1350 series mechanism ensures
contact welds formed at switch-on,
are positively separated by the
plunger tube acting directly on the
step in the moving contact.



Examples of printing



EN602A



EN730



EN822