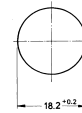


1

Pushbutton, opaque, mounting hole diameter 18.2 mm, 250 V/2 A



Pict.: green



Mounting hole

Technical data

General information

Form of lens protruding lens
Colour of lens see order block
Form of collar round

Dimensions

Diameter of collar 22 mm
Overall height 10.5 mm
Mounting depth 34 mm
Mounting hole 18.2 mm

Mechanical design

Mounting ring nut
Terminals see order block
Contact system sliding bridge contact
Contact function momentary
Contact arrangement see order block
Contact materials Ag
Illuminability no
Lamp socket no

Mechanical characteristics

Operating force max. 9.5 N
Operating travel 5 mm
Switching travel NC 2.1 mm
Switching travel NO 3.7 mm
Robustness min. 100 N

Electrical characteristics

Rated voltage AC max. 250 V
Rated current max. 2 A
Contact resistance acc. to life max. 200 mΩ

Other specifications

Operating life 50000
Degree of protection from front side IP40 (IP65 with sealing cap)
Ambient temp. operating min. -25 °C
Ambient temp. operating max. +85 °C
Storage temperature min. -40 °C
Storage temperature max. +90 °C
Resistance to constant environment according to IEC 600 68-2-3 and 2-30
Resistance at variable environment according to IEC 600 68-2-14 and 2-33
Weight 14 g
Flame class acc. to UL 94 V 0
Hot wire ignition acc. to IEC 60695-2-1 yes

Other Pushb.

Accessories Pushbutton, opaque, mounting hole diameter 18.2 mm, 250 V/2 A

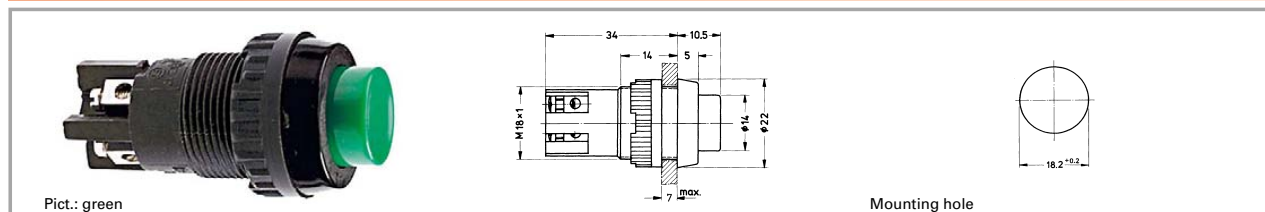
Description	Photo	Order no.	Page
Neoprene sealing cap, black		5.52.008.061/0100	
Neoprene sealing cap, red		5.52.008.061/0300	
Neoprene sealing cap, green		5.52.008.061/0500	
Protective sleeve for terminals		5.52.011.028/0100	

Accessories Pushbutton, opaque, mounting hole diameter 18.2 mm, 250 V/2 A

Description	Photo	Order no.	Page
Fixing spanner M 18, M 19		5.58.002.017/0105	5 - 23

1

Pushbutton, opaque, mounting hole diameter 18.2 mm, 250 V/2 A



Contact arrangement	Contact function	Illuminability	Terminals	Colour of lens	Order no.
2 NO	momentary	no	screw terminals	opaque black	1.01.102.001/0104
2 NO	momentary	no	screw terminals	opaque red	1.01.102.001/0301
2 NO	momentary	no	screw terminals	opaque green	1.01.102.001/0507
1 NC + 1 NO	momentary	no	screw terminals	opaque black	1.01.102.011/0104
1 NC + 1 NO	momentary	no	screw terminals	opaque white	1.01.102.011/0205
1 NC + 1 NO	momentary	no	screw terminals	opaque red	1.01.102.011/0301
1 NC + 1 NO	momentary	no	screw terminals	opaque green	1.01.102.011/0507

Other
Pushb.

Technical data see page 1 - 82