

MICRO SWITCH

A DIVISION OF MINNEAPOLIS-HONEYWELL REGULATOR COMPANY
MINNEAPOLIS, MINN.

FED. MFR. CODE 91929

SWITCH - BASIC

CATALOG LISTING

BA-2R-P1

(M) BA-2R-P1
ISSUE 1

BA-2R-P1

CATALOG LISTING

PAGE 1 OF 1

ISSUE 8

REPLACES

RELEASE NO. CMT 29 JWB RT

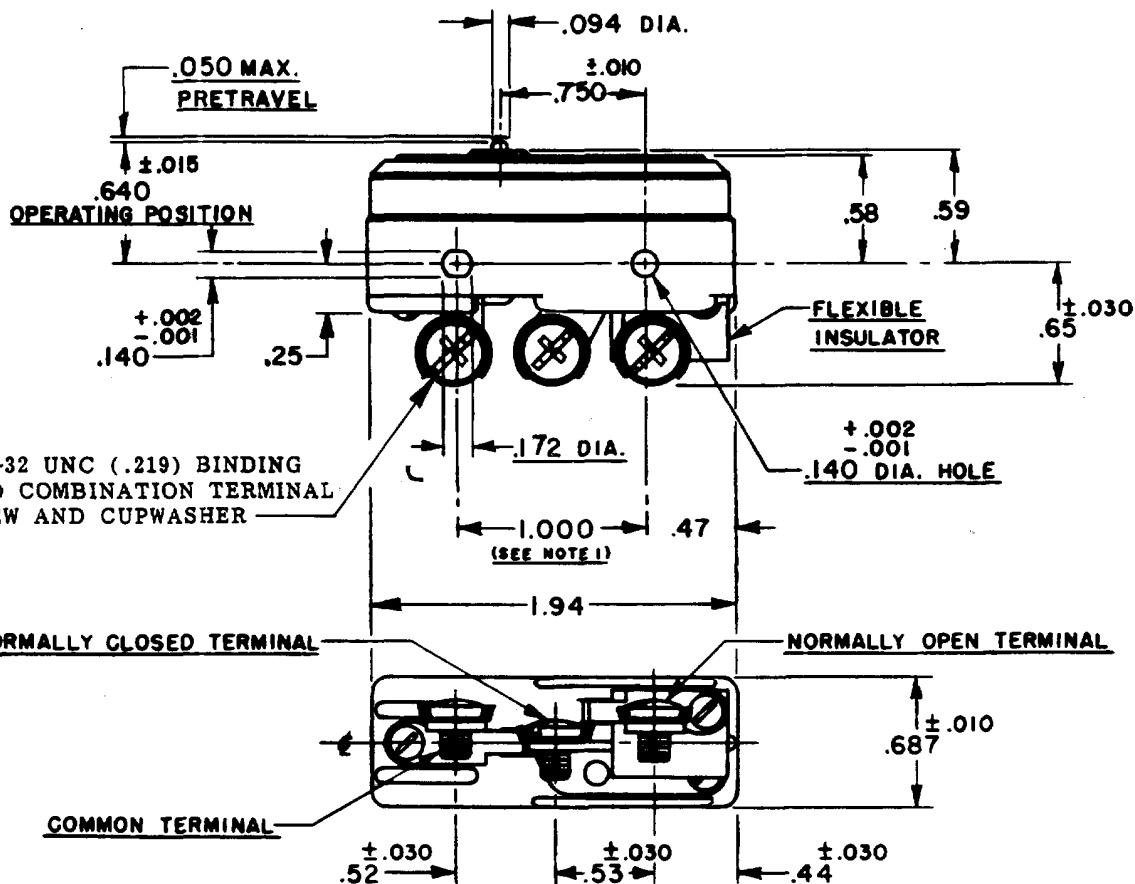
CHECK

REVISIONS

CHECK

C.M.A. 10 JUNE 55 CHECK

A	CO 9519	C.M.A.	10 JUNE 55
B	CO 31863	S.H.H.	27 MAR 73
C	CO 73287-C	J.A.T.	20 OCT 93
D	CO 77590	SAD	10 JUN 94
E	CO 92984	J.A.S.	27 MAY 98
F	CO 93346	D.L.T.	23 SEP 98
G	CO 94212-C	D.L.T.	20 SEP 99



NOTE
1-MOUNTING HOLES WILL ACCEPT PINS OR SCREWS OF .139 MAX. DIA. ON 1.000 ± .002 CENTERS

THIS DRAWING COVERS A PROPRIETARY ITEM AND IS THE PROPERTY OF MICRO SWITCH, A DIVISION OF HONEYWELL. THIS DRAWING IS NOT TO BE COPIED OR USED WITHOUT THE APPROVAL OF MICRO SWITCH.

CHARACTERISTICS

OPERATING FORCE ----- 14 - 22 OZ.
RELEASE FORCE ----- 10 OZ. MIN.
DIFFERENTIAL TRAVEL ----- .002 - .0075
OVERTRAVEL ----- .010 MIN.

ELECTRICAL DATA

CONTACT ARRANGEMENT
S. P. D. T.

-L145-
-L288-
-L299-
-L308-

UNDERWRITERS' LAB. INC. LISTED RATING
20A - 125, 250, OR 400 VAC; 15A - 125 VAC "L"
1HP - 125 VAC; 2HP - 250 VAC
1/2A - 125 VDC; 1/4A - 250 VDC
2A - 600 VAC



20(3)A 250V ~ T85 5E4

SCALE FULL

DO NOT SCALE PRINT

UNLESS OTHERWISE SPECIFIED
DIMENSIONS ARE IN INCHES
TOLERANCES ARE:

ONE PLACE (.0) ±.030
TWO PLACE (.00) ±.015
THREE PLACE (.000) ±.005
ANGLES ±

WEIGHT .075 LB.

FORMTEK
DRAWN