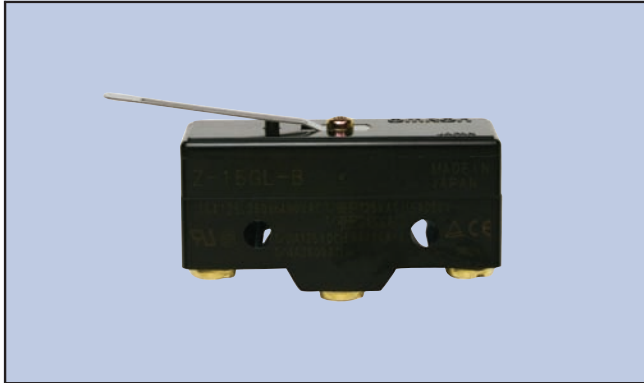


Snap Action, Standard



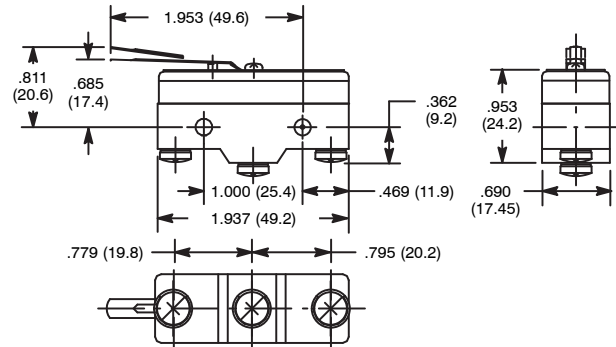
Features

- Actuator: Hinge Lever



NTE Type No.	Circuitry	Max. Pre-Travel	Min. Over Travel	Max. Operating Force	Max. Differential	Diag No.
54-428	SPDT	0.157"	0.063"	141g	0.051"	S53

S53



Specifications

Current Rating: 15A 125/250VAC, 0.5A 125VDC, 0.25A 250VDC
1/8 HP 125VAC, 1/4 HP 250VAC

Contact Resistance: 15 Milliohms (max.) initial

Insulation Resistance: 100 Megohms at 500VDC

Dielectric Strength: 1500VAC (50/60Hz for 1 minute)

Temperature Rating: -13° to +176°F (-25° to +80°C)

Electrical Life: 100,000 cycles min. (under rated load)

Mechanical Life: 1,000,000 cycles min.

Terminal Type: Screw Terminal

Snap Action, Standard



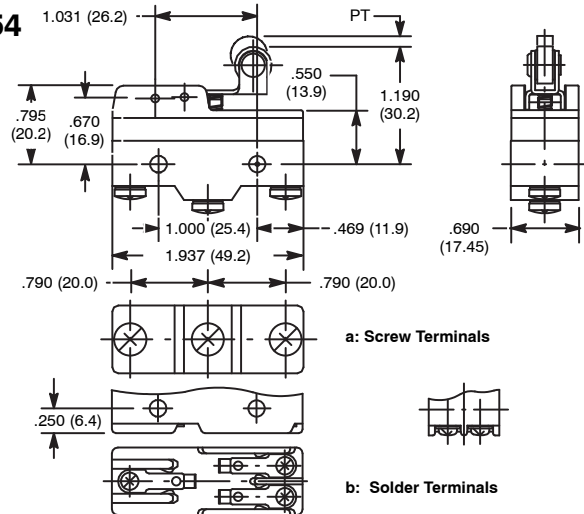
Features

- Actuator: Short Hinge Roller Lever



NTE Type No.	Circuitry	Max. Pre-Travel	Min. Over Travel	Max. Operating Force	Max. Differential	Diag No.
54-429	SPDT	0.22"	0.05"	70g	0.02"	S54b
54-440	SPDT	0.09"	0.095"	160g	0.02"	S54a

S54



Specifications

Current Rating: 15A 125/250/480VAC, 0.5A 125VDC, 0.25A 250VDC
1/8 HP 125VAC, 1/4 HP 250VA

Contact Resistance: 50 Milliohms (max.) initial

Insulation Resistance: 100 Megohms at 500VDC

Dielectric Strength: 1000VAC (50/60Hz for 1 minute)

Temperature Rating: -13° to +176°F (-25° to +80°C) with no icing

Electrical Life: 500,000 cycles min. (under rated load)

Mechanical Life: 20,000,000 cycles min.

Terminal Type: Refer to Diag No. in Table