

MICRO SWITCH

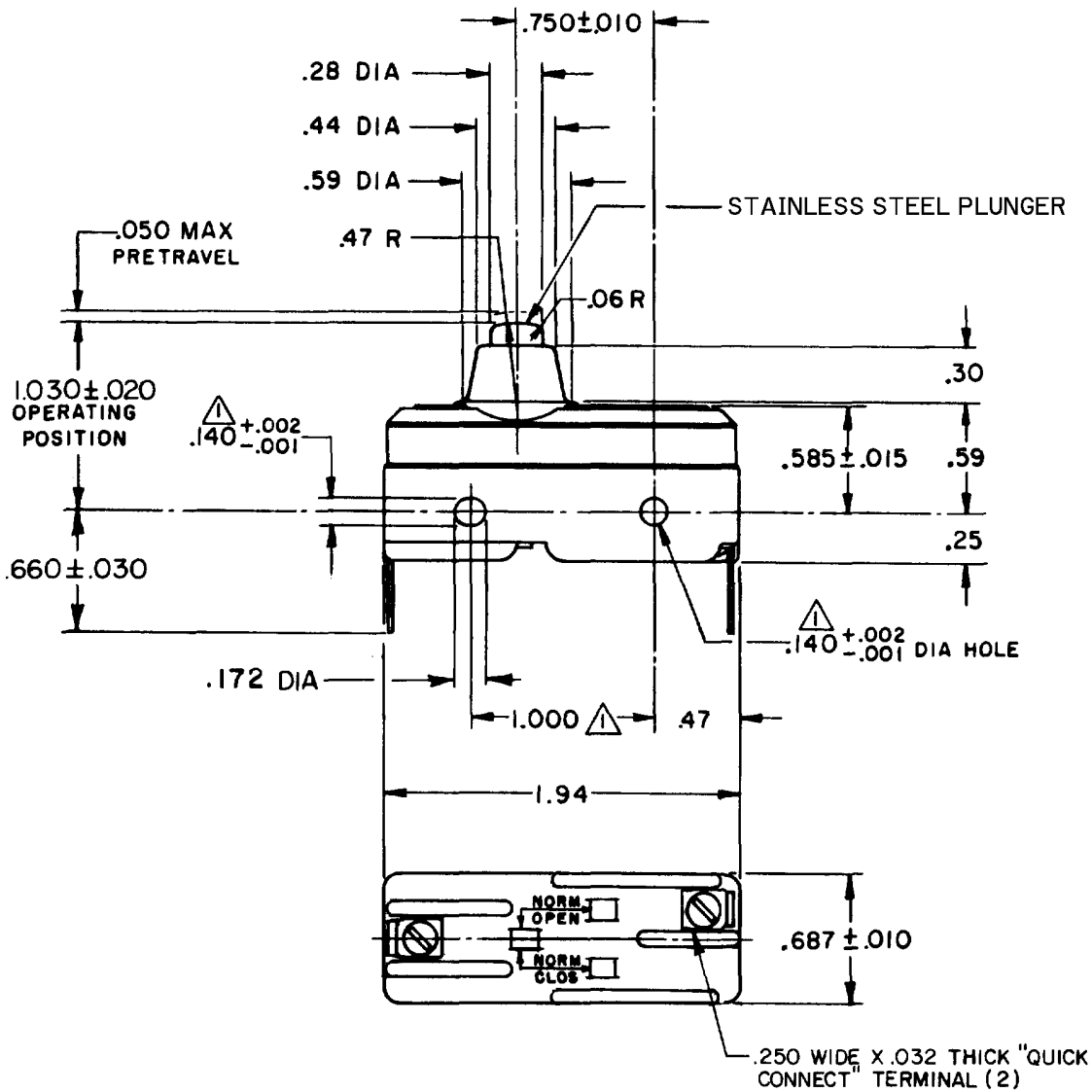
FREEPORT ILLINOIS, U.S.A
A DIVISION OF HONEYWELL INC.
FED. MFG. CODE 91929

SWITCH - BASIC

CATALOG LISTING

YA-2RB-D504

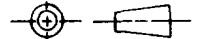
CATALOG LISTING
YA-2RB-D504
PAGE 1 OF 1
REPLACES
RELEASE NO. PR-14640
CHECK
ISSUE
M
5



NOTE
⚠ MOUNTING HOLES WILL ACCEPT PINS OR SCREWS OF .139 MAX DIA ON 1.000 ± .002 CENTERS

THIS DRAWING COVERS A PROPRIETARY ITEM AND IS THE PROPERTY OF MICRO SWITCH, A DIVISION OF HONEYWELL. THIS DRAWING IS NOT TO BE COPIED OR USED WITHOUT THE APPROVAL OF MICRO SWITCH.

THIRD ANGLE PROJECTION



CHARACTERISTICS	ELECTRICAL DATA	SCALE FULL	DO NOT SCALE PRINT
OPERATING FORCE - - - - - 14 - 22 OZ	CONTACT ARRANGEMENT S P N O	UNLESS OTHERWISE SPECIFIED TOLERANCES ARE ONE PLACE (.0) ± .030 TWO PLACE (.00) ± .015 THREE PLACE (.000) ± .005 ANGLES ± RAW MATERIAL - COMMERCIAL STANDARD DIMENSIONS ARE IN INCHES AND ARE TO BE MET BEFORE PROTECTIVE COATINGS ARE APPLIED MICRO SWITCH STANDARDS APPLY WEIGHT .051 LB	
RELEASE FORCE - - - - - 10 OZ MIN	L97 20A 125, 250 OR 480 VAC 10A 125 VAC "L" 11/2 HP 125 VAC, 2 HP 250 VAC 1/2A 125 VDC, 1/4A 250 VDC		
DIFFERENTIAL TRAVEL - - - .0020 - .0075	L288 L299 L308		
OVERTRAVEL - - - - - .094 MIN	CE D RU 20(3)A 250V ~ T85 5E4		

FORMTEK
FO-52848-B
DRAWN
TAD 2 APR 86
CHECK CEC 2 APR 86
CHECK