

Momentary Switches – Door Switches XP

XP

Characteristics	<ul style="list-style-type: none"> ■ Long overtravel plunger ■ >3 mm contact gap ■ Reset spring option for increased reset security
Rating	Up to 400 VAC, 16 A
Dimensions (mm)	30 x 32 x 12
Actuator	Plain or mushroom plungers
Approvals	UL, CSA, ENEC



Preferred Product Range

Ordering Reference	Actuating Force (N)	Actuating Force (oz)	Operating position (mm)	Operating position (in)	Terminal	Circuit	Actuator	Contacts	Electrical rating
XP2Z11	3.0	10.8	14.9	0.587	Faston	CO	Straight plunger	Silver nickel	Up to 400 VAC, 16 A
XP4Z11	1.8	6.5	14.9	0.587	Faston	NC	Straight plunger	Silver nickel	Up to 400 VAC, 16 A
XP5Z11	3.0	10.8	13.0	0.511	Faston	NO	Straight plunger	Silver nickel	Up to 400 VAC, 16 A
XP2E1Z11	6.5	23.3	14.9	0.587	Faston	CO	Mushroom plunger, reset	Silver nickel	Up to 400 VAC, 16 A
XP4E1Z11	3.8	13.7	14.9	0.587	Faston	NC	Mushroom plunger, reset	Silver nickel	Up to 400 VAC, 16 A
XP5E1Z11	6.5	23.3	13.0	0.511	Faston	NO	Mushroom plunger, reset	Silver nickel	Up to 400 VAC, 16 A
XP2E2Z11	3.0	10.8	14.9	0.587	Faston	CO	Mushroom plunger, reset	Silver nickel	Up to 400 VAC, 16 A

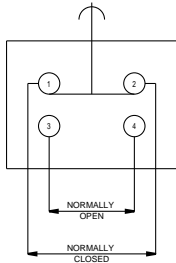
H

Momentary Switches – Door Switches XP

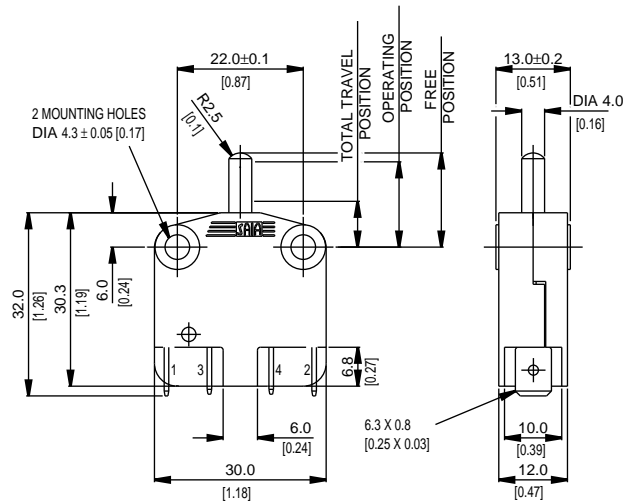
Specifications

Housing	Glass fiber reinforced nylon
Plunger	Glass fiber reinforced nylon
Mechanism	Change-over, normally open, normally closed
Contacts	Silver
Terminals	6.3 mm (0.25 in) faston (quick connect) - brass
Temperature range °C	-20°C to +140°C
Mechanical life	10 ⁷ cycles minimum (impact free actuation)
Protection	IP40 (enclosure)
Mounting	Screw mounting
Actuators	Straight or mushroom plunger
Special features	Optional reset spring for increased reset security

Circuit diagram



Dimensions
mm [in]



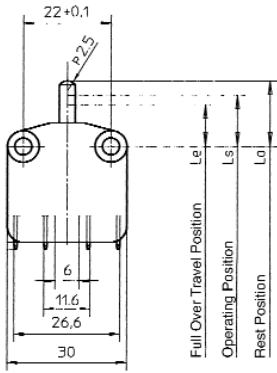
Recommended Maximum Electrical Ratings

Voltage (max)	Resistive load (A)	Inductive load	Horsepower	Approval
250 VAC	16 (0.75 pf)	-	-	UL 1054/CSA 22.2 No. 55 - 6,000 operations
125 VAC	-	-	¼ HP (0.45 pf)	UL 1054 - Horsepower- 6,000 operations
250 VAC	-	-	¼ HP (0.45 pf)	UL 1054 - Horsepower- 6,000 operations
250 VAC	16	6	-	EN.60158-1 T85 (°C) 50,000 operations
400 VAC	16	4	-	EN.60158-1 T85 (°C) 10,000 operations
0-15 VDC	10	-	-	General rating - 50,000 operations
15-30 VDC	7	-	-	General rating - 50,000 operations

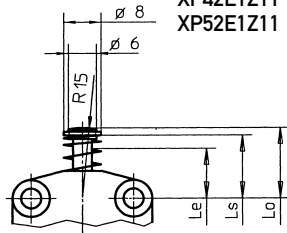
Momentary Switches – Door Switches XP

Operating Characteristics

Actuator	Reference	Actuating Force Maximum		Release Force Minimum		Free Position Maximum		Operating Position		Total Travel Position Maximum		Over travel	
		(N)	(oz)	(N)	(oz)	(mm)	(in)	(mm)	(in)	(mm)	(in)	(mm)	(in)
Straight		3.00	10.0	5.5	19.7	15.3	0.602	14.9 ± 0.4	0.587 ± 0.016	8.0	0.315	4.5	0.177
		1.75	6.20	5.5	19.7	15.3	0.602	14.9 ± 0.4	0.587 ± 0.016	8.0	0.315	6.5	0.256
		3.00	10.0	5.5	19.7	16.6	0.653	13.0 ± 0.4	0.511 ± 0.016	8.0	0.315	4.5	0.177

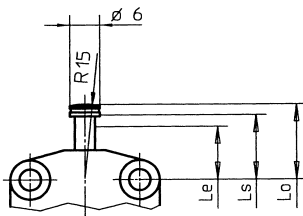


Mushroom plunger with reset spring (mm)



XP2E1Z11	6.5	23.3	9.0	32.3	15.3	0.602	14.9 ± 0.4	0.587 ± 0.016	10.5	0.413	2.1	0.082
XP42E1Z11	3.75	13.4	9.0	32.3	15.3	0.602	14.9 ± 0.4	0.587 ± 0.016	10.5	0.413	4.0	0.157
XP52E1Z11	6.5	23.3	9.0	32.3	16.6	0.653	13.0 ± 0.4	0.511 ± 0.016	10.5	0.413	2.1	0.082

Mushroom plunger (mm)



XP2E2Z11	3.0	10.0	5.5	19.7	15.3	0.602	14.9 ± 0.4	0.587 ± 0.016	8.6	0.339	4.0	0.157
----------	-----	------	-----	------	------	-------	------------	---------------	-----	-------	-----	-------

Ordering Reference – How to Build a Part Number

Type	XP	Positive action
	XPS	
Circuit	2	Changeover
	42	Normally closed
	52	Normally open
Actuators	No digit	Straight plunger
	E1	Mushroom plunger with reset spring
	E2	Mushroom plunger
Approvals	Z11	UL, cUL, CSA and ENEC