

MICRO SWITCH

A DIVISION OF MINNEAPOLIS-HONEYWELL REGULATOR COMPANY
FREDERICK, MINNESOTA

SWITCH - BASIC

FED. MFR. CODE 91929

SKETCH 24404
ISSUE 1

WA-1RX-A4

PAGE 1 OF 1

M

DRAWING NUMBER

ISSUE 10

REPLACES SR 8871

CHECK

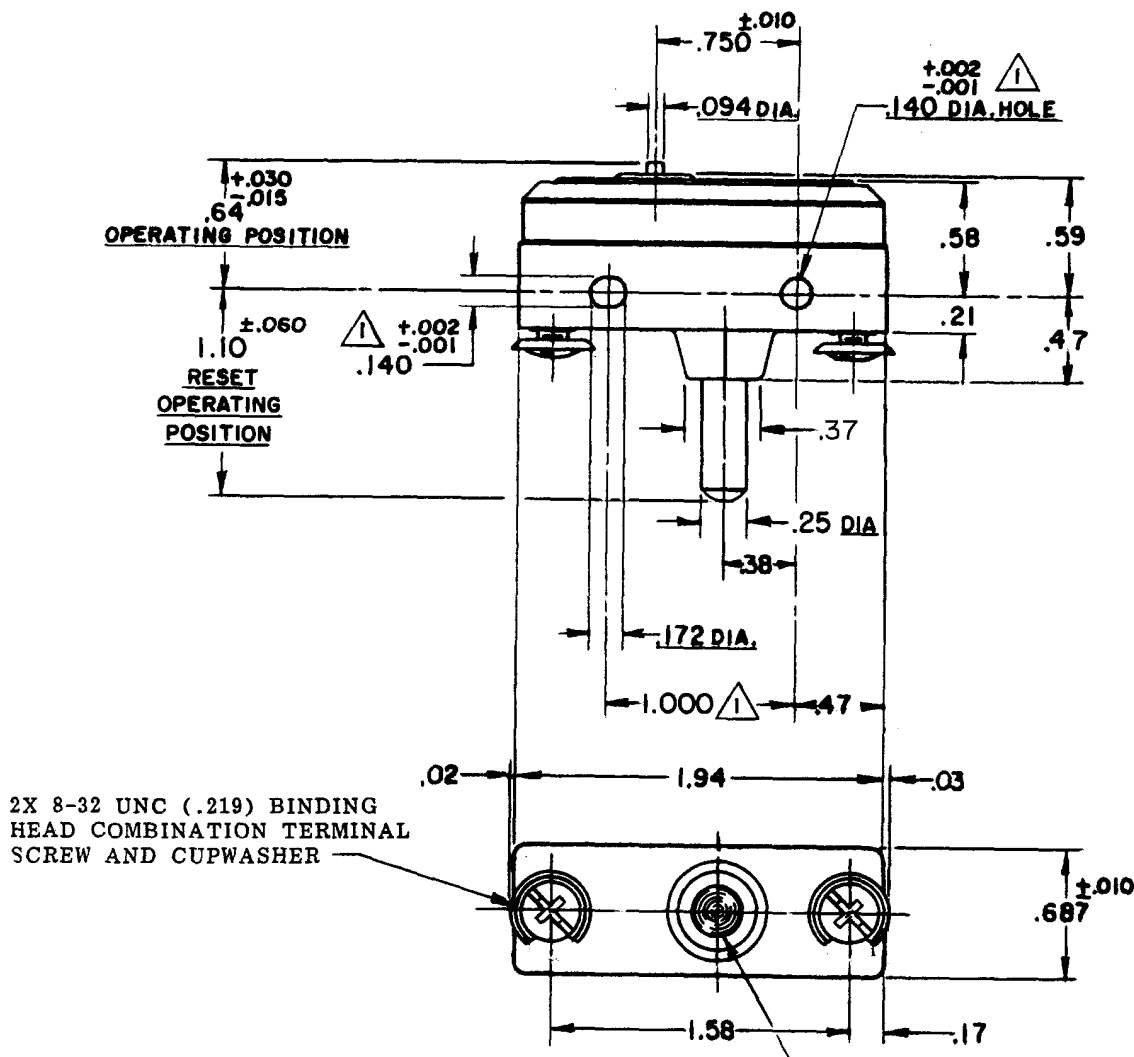
REVISIONS

A	CO16851	MBF	19 DEC 62
B	CO19231	H B W	22 MAY 64
C	CO36222	R E R	8 DEC 75
D	CO38586	K S W	1 AUG 77
E	CO73267-G	J A T	29 OCT 93
F	CO79609 A	DLT	14 FEB 95
G	CO-82632	DLT	25 JUL 96
H	CO84043	DLT	21 MAR 97
J	CO93346	DLT	23 SEP 98

15 JULY 59

14 MAR 60

15 JULY 59



2X 8-32 UNC (.219) BINDING HEAD COMBINATION TERMINAL SCREW AND CUPWASHER

NOTE-
MOUNTING HOLES WILL ACCEPT PINS OR SCREWS OF .139 MAX. DIA. ON 1.000 ±.008 CENTERS.

RED PLASTIC RESET BUTTON

THIS DRAWING COVERS A PROPRIETARY ITEM AND IS THE PROPERTY OF MICRO SWITCH, A DIVISION OF MINNEAPOLIS-HONEYWELL REGULATOR CO. THIS DRAWING IS NOT TO BE COPIED OR USED WITHOUT THE APPROVAL OF MICRO SWITCH.

CHARACTERISTICS	ELECTRICAL DATA	SCALE FULL
OPERATING FORCE - - - - - 20 OZ MAX	CONTACT ARRANGEMENT SINGLE POLE NORM CLOSED MAINTAINED CONTACT	DO NOT SCALE PRINT
DIFFERENTIAL TRAVEL - - - - - .008 MAX (WITH RESET PLUNGER HELD FULLY DEPRESSED)	UNDERWRITERS' LAB. INC. LISTED RATING 20 A-125; 250 OR 277 VAC 3/4 HP-125 VAC; 1 1/2 HP-250 VAC	UNLESS OTHERWISE SPECIFIED DIMENSIONS ARE IN INCHES
OVERTRAVEL - - - - - .010 MIN	-L178B TP -L288 -L299 -L308	TOLERANCES ARE: ONE PLACE (.0) ±.030 TWO PLACE (.00) ±.015 THREE PLACE (.000) ±.005 ANGLES ±
RESET CHARACTERISTICS	CE Ⓟ Ⓢ	WEIGHT
OPERATING FORCE - - - - - 25 OZ MAX	20(3)A 250V ~ T85 5E4	

FORMTEK
P-3378