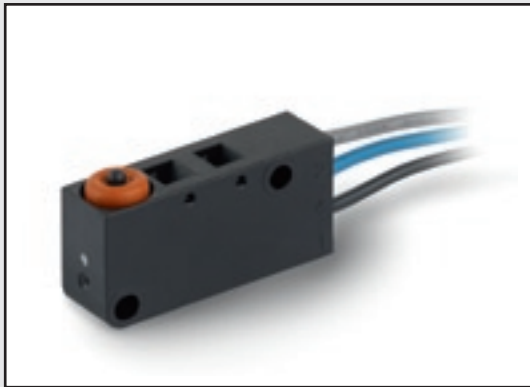
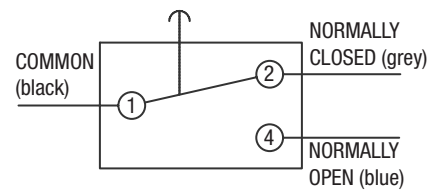


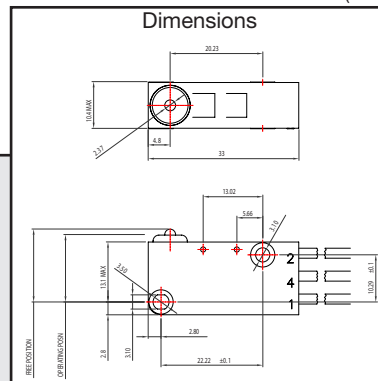
Sealed Microswitch



Circuit diagram



Dimensions



V3NS

V3NS

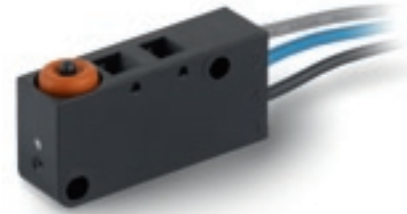
- Characteristics
- sealed (IP67)
 - pre-wired option
 - faston terminals
 - robust construction
 - compliant to glow wire requirements IEC 60335

Rating 250 VAC, 6 A

Dimensions (mm) 33 x 10.4 x 15.9

- Actuator
- plunger
 - plain levers
 - roller levers
 - cam follower lever

Approvals UL, CSA, ENEC



Miniature sealed

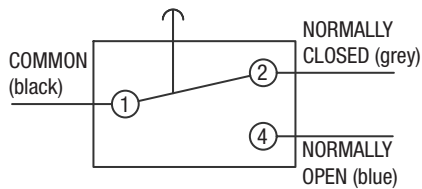
Preferred Range

| Ordering Reference | Actuating Force max. (N) | Sealing (ozf) | Sealing (IP67) | Operating position (mm) | Operating position (in) | Terminal | Circuit | Actuator | Contacts | Electrical rating |
|--------------------|--------------------------|---------------|----------------|-------------------------|-------------------------|-----------|---------|----------------------|----------|-------------------|
| V3NSUL | 2.2 | 8.0 | IP67 | 14.7 ± 0.4 | 0.58 ± 0.016 | Pre-wired | CO | Plunger | Ag | Up to 250VAC, 6A |
| V3NSY1UL | 1.3 | 4.7 | IP67 | 16.3 ± 0.85 | 0.64 ± 0.034 | Pre-wired | CO | Plain lever | Ag | Up to 250VAC, 6A |
| V3NSYRUL | 2.6 | 8.0 | IP67 | 21.0 ± 0.45 | 0.83 ± 0.018 | Pre-wired | CO | Roller lever - short | Ag | Up to 250VAC, 6A |
| V3NSYR1UL | 1.6 | 4.7 | IP67 | 21.7 ± 0.8 | 0.85 ± 0.032 | Pre-wired | CO | Roller lever - long | Ag | Up to 250VAC, 6A |
| V3NSYCUL | 1.6 | 4.7 | IP67 | 19.45 ± 0.8 | 0.77 ± 0.032 | Pre-wired | CO | Cam follower lever | Ag | Up to 250VAC, 6A |
| V3NST1UL | 2.2 | 8.0 | IP67 | 14.7 ± 0.4 | 0.58 ± 0.016 | Faston | CO | Plunger | Ag | Up to 250VAC, 6A |
| V3NST1Y1UL | 1.3 | 4.7 | IP67 | 16.3 ± 0.85 | 0.64 ± 0.034 | Faston | CO | Plain lever | Ag | Up to 250VAC, 6A |
| V3NST1YRUL | 2.6 | 8.0 | IP67 | 21.0 ± 0.45 | 0.83 ± 0.018 | Faston | CO | Roller lever - short | Ag | Up to 250VAC, 6A |
| V3NST1YR1UL | 1.6 | 4.7 | IP67 | 21.7 ± 0.8 | 0.85 ± 0.032 | Faston | CO | Roller lever - long | Ag | Up to 250VAC, 6A |
| V3NST1YCUL | 1.6 | 4.7 | IP67 | 19.45 ± 0.8 | 0.77 ± 0.032 | Faston | CO | Cam follower lever | Ag | Up to 250VAC, 6A |

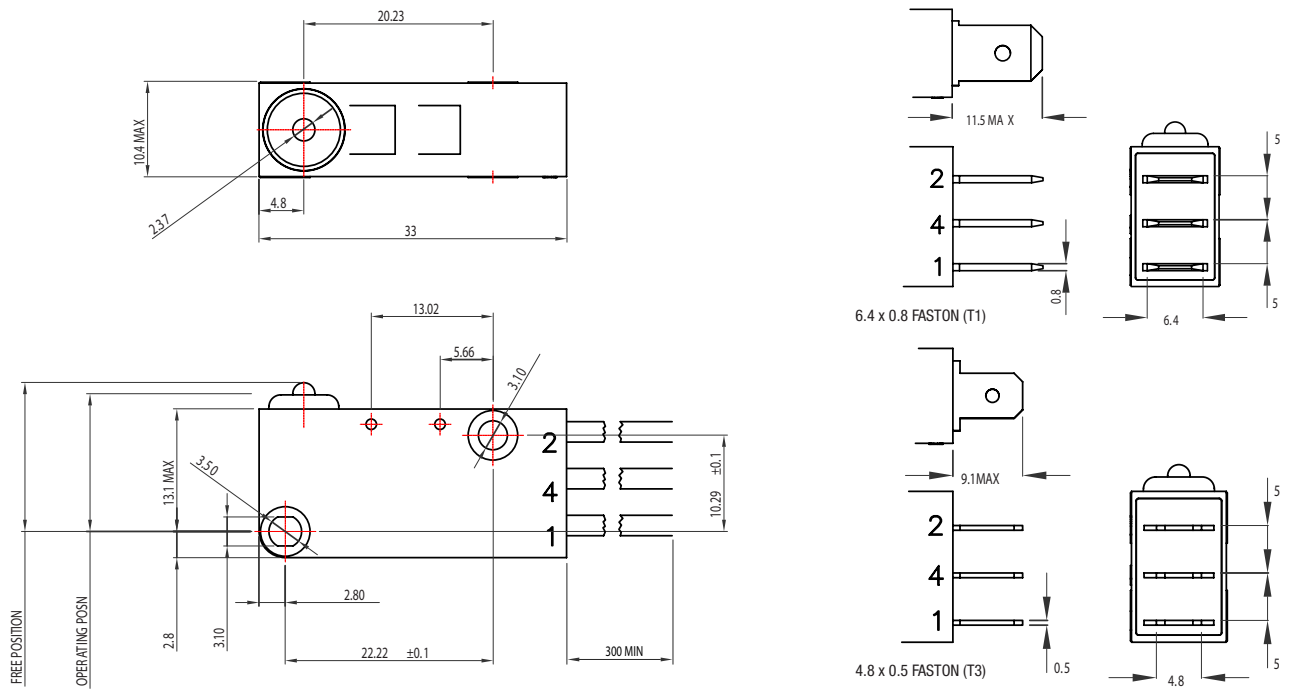
Specifications

| | |
|-------------------|---|
| Housing | Glass fibre reinforced flame retardant nylon |
| Plunger | Polyphenylene Sulphide |
| Mechanism | Snap-action, single pole |
| Functions | Change-over |
| Cowl | Silicone Rubber |
| Contacts | Silver |
| Terminals | Pre-wired, Faston |
| Temperature Range | -40°C to +85°C |
| Mechanical Life | 1 million cycles minimum (impact free operation) |
| Protection | IP67 (enclosure) |
| Mounting | Side mounting |
| Actuators | Plain lever, cam follower lever - stainless steel, roller levers - stainless steel, acetal roller |

Circuit diagram



Dimensions



Recommended maximum electrical ratings

| Voltage (max) | Load (A) | Approval |
|---------------|------------|---|
| 125 VAC | 6 (0.75pf) | UL 1054/CSA 22.2 No.55 - 6000 operations (85°C) |
| 250 VAC | 6 (0.75pf) | UL 1054/CSA 22.2 No.55 - 6000 operations (85°C) |
| 250 VAC | 6 (2) | EN61058-1, T85 50,000 operations |
| 250 VAC | 4 | General inductive rating - 200,000 operations minimum |
| 250 VAC | 5 | General resistive rating - 200,000 operations minimum |
| 30 vdc | 5 | General resistive rating - 200,000 operations minimum |
| 5 vdc | 0.001 | General resistive rating - 1 million operations minimum |

Miniature sealed

Operating Characteristics

| Actuator | Reference | Actuating Force | | Release Force | | Free Position | | Operating Position | | Movement Differential | |
|-----------|---|-----------------|-------|---------------|-------|---------------|------|--------------------|--------------|-----------------------|-------|
| | | Maximum (N) | (ozf) | Minimum (N) | (ozf) | Maximum (mm) | (in) | (mm) | (in) | Maximum (mm) | (in) |
| Plunger | V3NSUL V3NST1UL V3NST3UL | 2.2 | 8.0 | 0.4 | 1.4 | 16 | 0.63 | 14.7 ± 0.4 | 0.58 ± 0.016 | 0.25 | 0.01 |
| Y1 lever | V3NSY1UL V3NST1Y1UL V3NST3Y1UL | 1.3 | 4.7 | 0.2 | 0.7 | 19 | 0.75 | 16.3 ± 0.85 | 0.64 ± 0.034 | 1.1 | 0.05 |
| YR lever | V3NSYRUL V3NST1YRUL V3NST3YRUL | 2.6 | 8.0 | 0.4 | 1.4 | 22.5 | 0.89 | 21.0 ± 0.45 | 0.83 ± 0.018 | 0.28 | 0.013 |
| YR1 lever | V3NSYR1UL V3NST1YR1UL V3NST3YR1UL | 1.6 | 4.7 | 0.2 | 0.7 | 24.1 | 0.95 | 21.7 ± 0.8 | 0.85 ± 0.032 | 0.5 | 0.02 |
| YC lever | V3NSYCUL V3NST1YCUL V3NST3YCUL | 1.6 | 4.7 | 0.2 | 0.7 | 23 | 0.91 | 19.45 ± 0.8 | 0.77 ± 0.032 | 0.5 | 0.02 |

Operating characteristics are specified from the lower mounting hole
 Overtravel: Plunger can be depressed flush with housing. The housing should not be used as an end stop

Ordering Reference

| | | | | | | |
|------------------|--|---------------|----|----|----|----|
| Basic type | V3NS | Example: V3NS | T3 | C2 | Y1 | UL |
| Terminals | No symbol, pre-wired with standard 300mm cables | | | | | |
| T1 | 6.4 x 0.8 Faston | | | | | |
| T3 | 4.8 x 0.5 Faston | | | | | |
| Circuit | No symbol, change-over | | | | | |
| C2 | Normally closed | | | | | |
| C4 | Normally open | | | | | |
| Actuators | No symbol, without lever or actuator | | | | | |
| Y1 | Plain lever 35mm | | | | | |
| YR | Roller lever 20mm | | | | | |
| YR1 | Roller lever 32mm | | | | | |
| YC | Cam follower lever 32mm | | | | | |
| Contact Material | No symbol. Ag | | | | | |
| Approvals | No symbol, without approval | | | | | |
| UL | UL, CSA, ENEC Approval | | | | | |
| Special Features | / <input type="checkbox"/> <input type="checkbox"/> <input type="checkbox"/> <input type="checkbox"/> Burgess specialise in customer specific solutions Additional product variants are available or can be provided If your requirements cannot be satisfied from the options listed, please contact www.saia-burgess.com or your local SB outlet. | | | | | |