

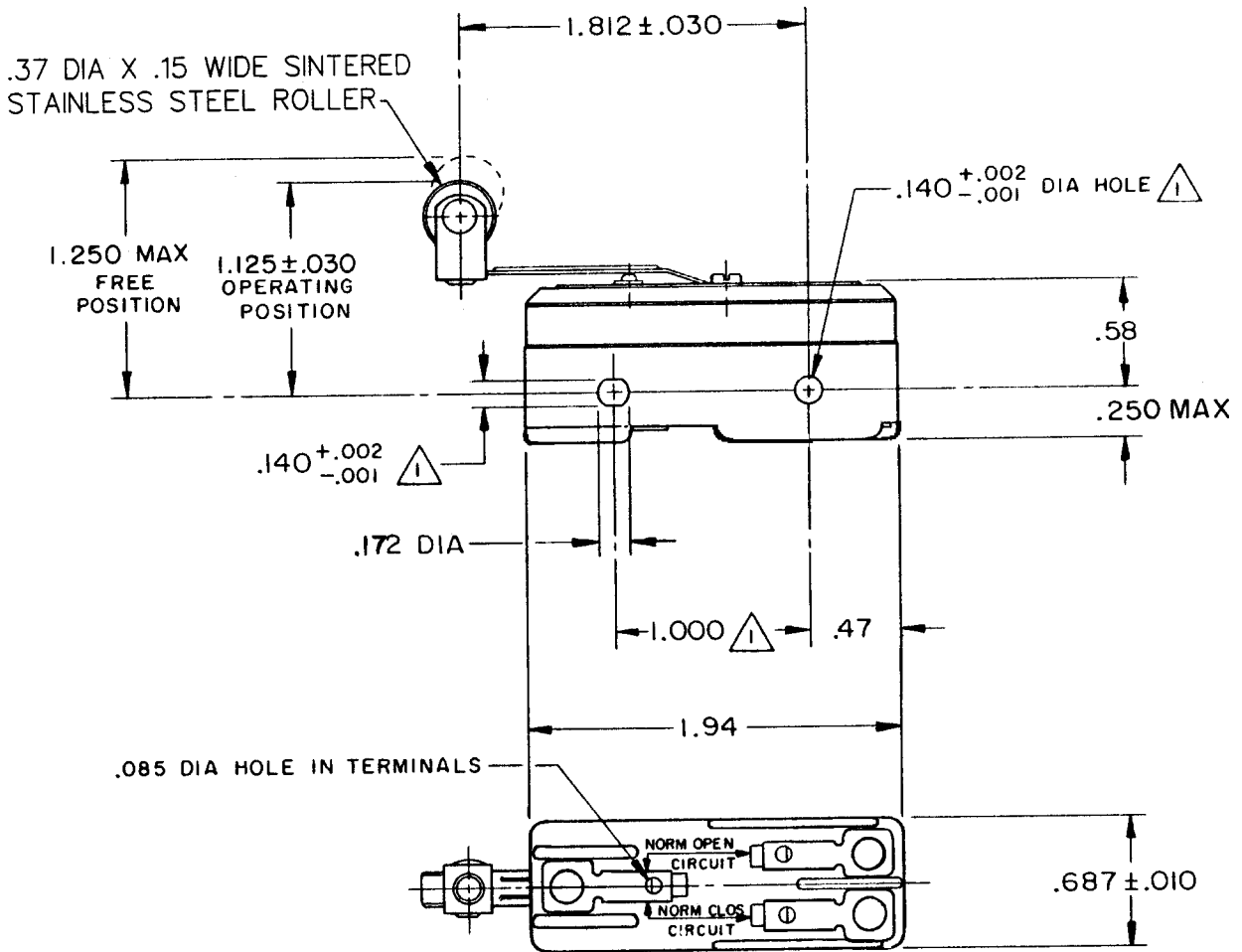


MICRO SWITCH
 FREEPORT, ILLINOIS, U.S.A.
 A DIVISION OF HONEYWELL

FED. MFG. CODE 91929

SWITCH - BASIC

CATALOG LISTING
BZ - 2RL2



NOTES
 1 MOUNTING HOLES WILL ACCEPT PINS OR SCREWS OF .139 MAX DIA ON 1.000 ± .002 CENTERS

THIS DRAWING COVERS A PROPRIETARY ITEM AND IS THE PROPERTY OF MICRO SWITCH, A DIVISION OF MINNEAPOLIS-HONEYWELL REGULATOR CO. THIS DRAWING IS NOT TO BE COPIED OR USED WITHOUT THE APPROVAL OF MICRO SWITCH.

CHARACTERISTICS

OPERATING FORCE ----- 5 OZ MAX
 RELEASE FORCE ----- 1/2 OZ MIN
 DIFFERENTIAL TRAVEL ----- .050 MAX
 DO NOT OVERTRAVEL MORE THAN ----- .060

ELECTRICAL DATA

CONTACT ARRANGEMENT
 S P D T

UNDERWRITERS' LAB. INC. LISTED RATING

-L96- 15 A - 125, 250, OR 480 VAC
 1/2 A - 125 VDC, 1/4 A - 250 VDC
 1/8 HP - 125 VAC, 1/4 HP - 250 VAC

-L288-
 -L299-
 -L306- 16A 250V T85 5E4

SCALE FULL

DO NOT SCALE PRINT

UNLESS OTHERWISE NOTED
 DIMENSIONS ARE IN INCHES

TOLERANCES ARE:

ONE PLACE	(.0)	±.030
TWO PLACE	(.00)	±.015
THREE PLACE	(.000)	±.005
ANGLES		±

WEIGHT .060 LB

DRAWING NUMBER **BZ-2RL2** PAGE 1 OF 1
 ISSUE **M** 13
 REVISIONS:
 A CO17410 G C H 27 APR 63
 B CO46304 J A P 12 OCT 79
 C CO 58037 SMA 1 OCT 85
 D CO-752048 K D R 1 FEB 94
 E CO-78874 DLT 18 NOV 94
 F CO93346 DLT 9 SEP 98
 G CO-94212-J J J A 5 OCT 99
 CHECK **L.S.D** 22 MAY 63
 CHECK 27 APRIL 63
 DRAWN
 FORMTEK FO-90378