



MICRO SWITCH

FREEPORT, ILLINOIS, U.S.A.
A DIVISION OF HONEYWELL

FED. MFG. CODE 91829

SWITCH - BASIC

CATALOG LISTING

BZ - 2RD - P1

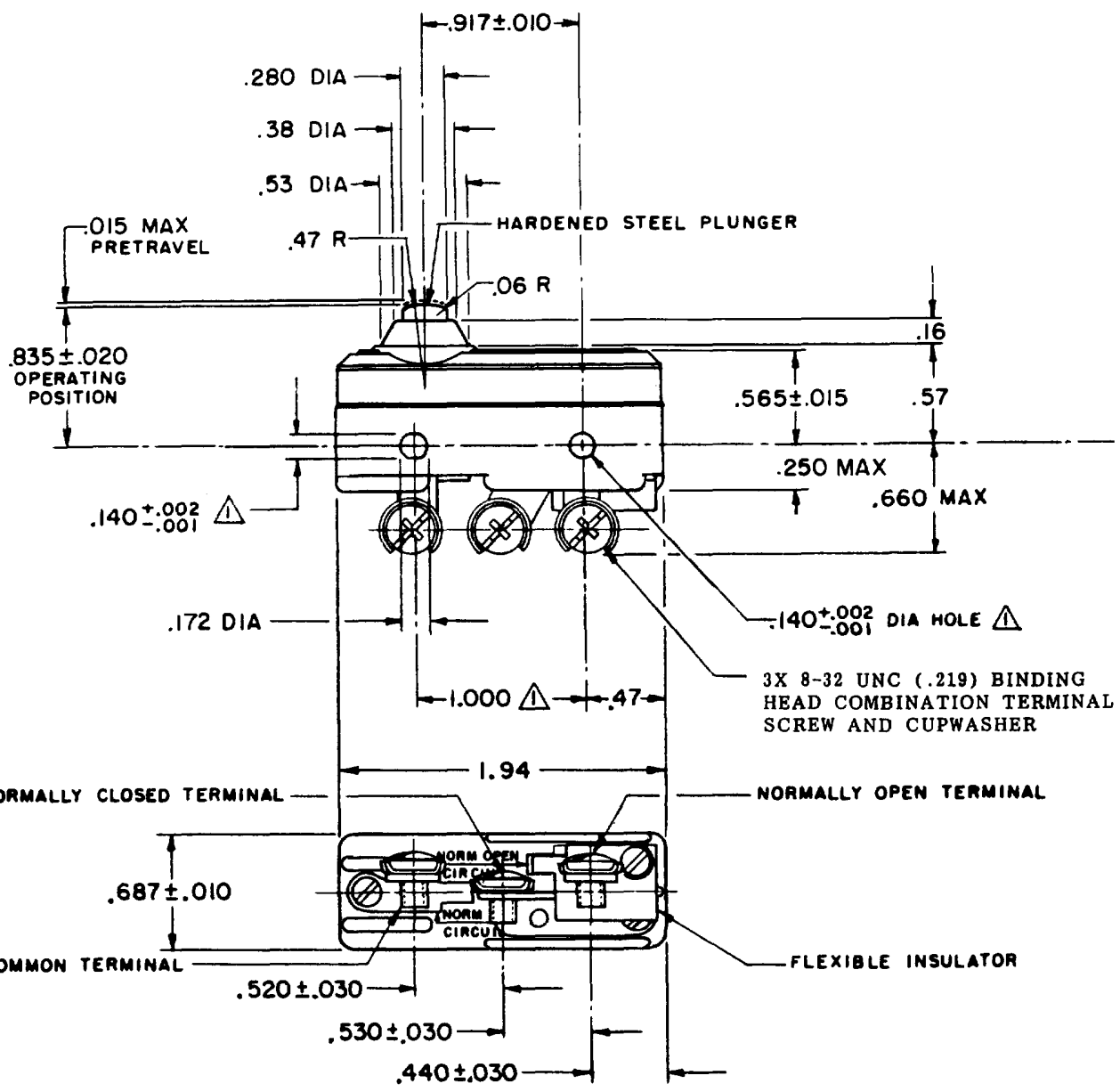
AHD3000

M BZ - 2RD - P1
PAGE 1 OF 1

DRAWING NUMBER
ISSUE
10

REVISIONS	CHECK	DATE
A CO17410 S C H 22 APRIL 63		
B CO31863 S R H 27 MAR 73		
C CO 58037 SMA 1 OCT 83		
D CO 73287-6 J A L 20 OCT 93		
E CO-77591 D A W 22 JUN 94		
F CO93346 D L T 1 SEP 98		
G CO-94212-C D L T 14 SEP 99		
H 0018448 D V M 17 FEB 06		

FORMTEK
FO-90378
DRAWN
G C H
22 APRIL 63
CHECK
L.S.D
14 JUN 63



NOTE
 ▲ - MOUNTING HOLES WILL ACCEPT PINS OR SCREWS OF .139 MAX DIA ON 1.000±.002 CENTERS

THIS DRAWING COVERS A PROPRIETARY ITEM AND IS THE PROPERTY OF MICRO SWITCH, A DIVISION OF MINNEAPOLIS-HONEYWELL REGULATOR CO. THIS DRAWING IS NOT TO BE COPIED OR USED WITHOUT THE APPROVAL OF MICRO SWITCH.

CHARACTERISTICS	ELECTRICAL DATA	SCALE FULL
OPERATING FORCE----- 9 - 13 OZ	CONTACT ARRANGEMENT S P D T	DO NOT SCALE PRINT
RELEASE FORCE----- 4 OZ MIN	15A - 125, 250 OR 480 VAC, 2A - 600 VAC -L74- 1/8HP - 125 VAC; 1/4HP - 250 VAC 1/2A - 125 VDC; 1/4A - 250 VDC	UNLESS OTHERWISE NOTED DIMENSIONS ARE IN INCHES TOLERANCES ARE:
DIFFERENTIAL TRAVEL----- .0004 - .0020	-L288- -L315- -L306-	ONE PLACE (.0) ±.030 TWO PLACE (.00) ±.018 THREE PLACE (.000) ±.008 ANGLES ±
OVERTRAVEL----- .060 MIN	16A 250V ~ T85 5E4	WEIGHT .076 LB