

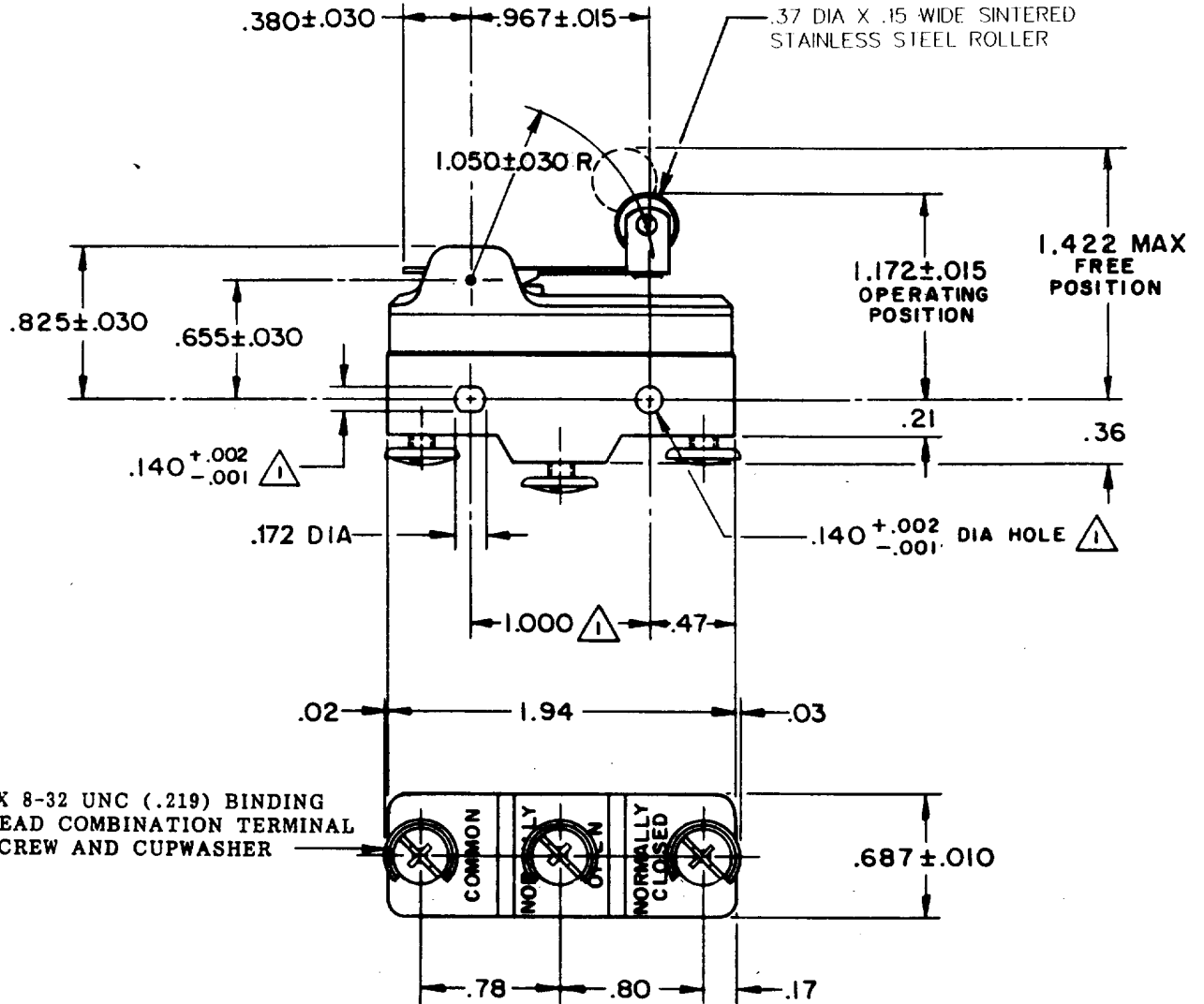


MICRO SWITCH
 FREEPORT ILLINOIS
 A DIVISION OF HONEYWELL
 FED. MFG. CODE 91929

SWITCH-BASIC

CATALOG LISTING
BE-2RV22-A4

S



3X 8-32 UNC (.219) BINDING HEAD COMBINATION TERMINAL SCREW AND CUPWASHER

NOTE -
 MOUNTING HOLES WILL ACCEPT PINS OR SCREWS OF .139 MAX DIA ON 1.000±.002 CENTERS

THIS DRAWING COVERS A PROPRIETARY ITEM AND IS THE PROPERTY OF MICRO SWITCH, A DIVISION OF MINNEAPOLIS-HONEYWELL REGULATOR CO. THIS DRAWING IS NOT TO BE COPIED OR USED WITHOUT THE APPROVAL OF MICRO SWITCH.

CHARACTERISTICS	ELECTRICAL DATA	SCALE FULL
OPERATING FORCE ----- 6 OZ MAX	CONTACT ARRANGEMENT S P D T	DO NOT SCALE PRINT
RELEASE FORCE ----- 1 1/2 OZ MIN	25-A-125, 250, 480 VAC 1 HP-125 VAC; 2 HP-250 OR 480 VAC; PILOT DUTY 750 VA-480 VAC, MAX; 60/75°C (Cu)	UNLESS OTHERWISE SPECIFIED DIMENSIONS ARE IN INCHES
PRETRAVEL ----- .250 MAX		TOLERANCES ARE:
DIFFERENTIAL TRAVEL ----- .045 MAX		ONE PLACE (.0) ±.030
OVERTRAVEL ----- .030 MIN		TWO PLACE (.00) ±.015
		THREE PLACE (.000) ±.005
		ANGLES ±
		WEIGHT

BE-2RV22-A4
 DRAWING NUMBER
 ISSUE
 REVISIONS
 A CO16947 L M H 9 NOV 62
 B CO27518 L S D 28 JUN 70
 C CO30432 H E R 9 MAY 72
 D CO 32144 G L H 27 JUL 73
 E CO 36627 C J H 9 APR 76
 F CO 38782 W J M 24 JAN 86
 G CO-70184-6 S J W 9 MAR 92
 H CO-72387 J J O 1 MAY 92
 J CO-73287-G J A L 20 OCT 93
 K CO-75204B D A W 1 FEB 94
 L CO-77588 K D R 29 MAR 94
 FO-80378
 DRAWN
 CHECK
 RELEASE NO.
 REPLACES
 L M H 9 NOV 62