

MICRO SWITCH

FREEPORT ILLINOIS, U.S.A
A DIVISION OF HONEYWELL
FED. MFG. CODE 91929

SWITCH-BASIC

CATALOG LISTING

BA-R358-A2

ABE0494

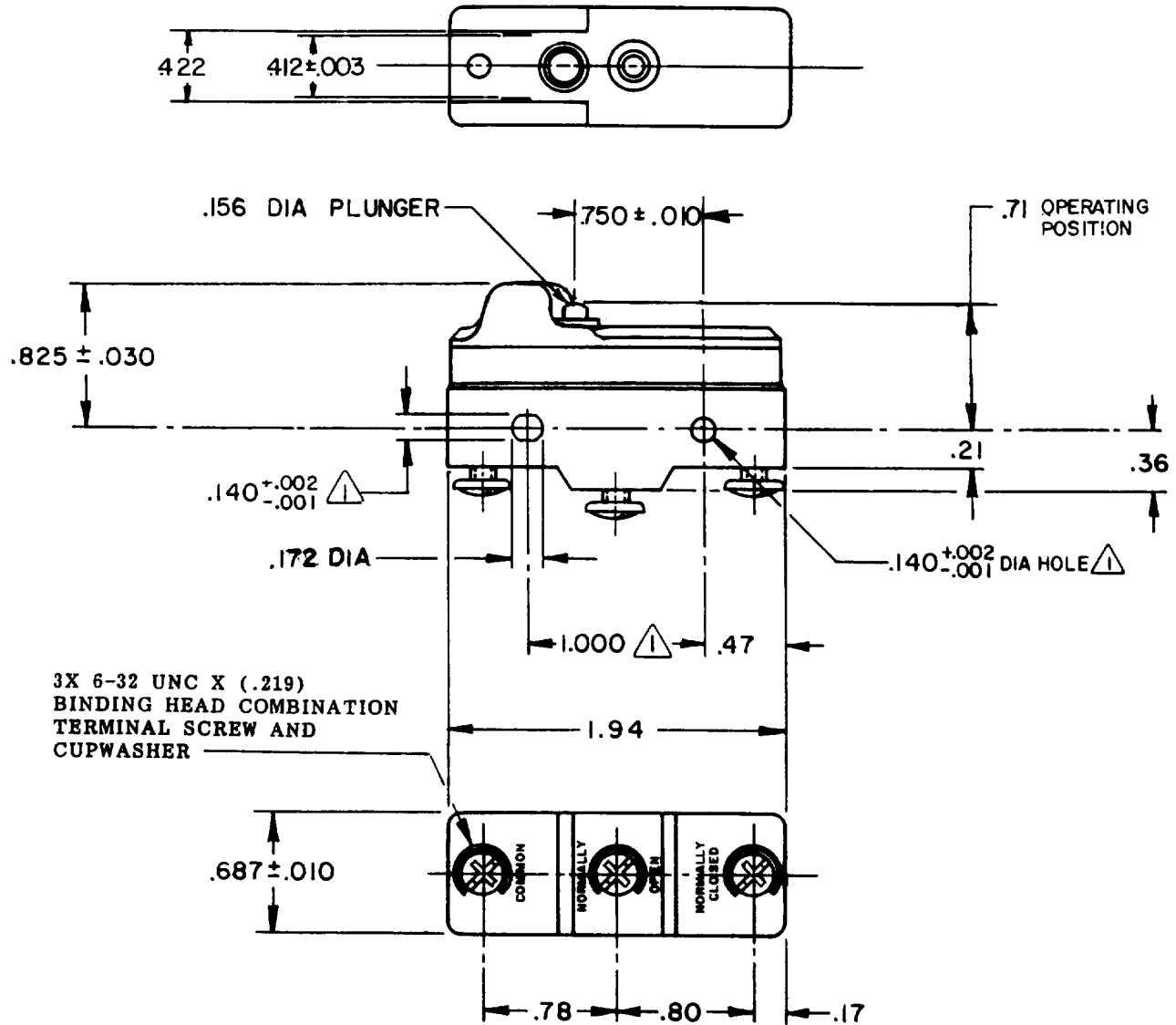
CATALOG LISTING
PAGE 1 OF 1
REPLACES
RELEASE NO. PR-12511
CHECK
21FEB06
RJ
CHECK
28 OCT 83
CHECK
28 OCT 83
FORMTEK
FO-52848-A
DRAWN
KEW

BA-R358-A2

M

ISSUE
7

REVISIONS	DATE	BY	DESCRIPTION
A	0054298	G J W	25 FEB 84
B	CO-73287-J	J A L	22 NOV 93
C	CO-77590	SAD	7 JUNE 94
D	CO92853	J A K	27 MAR 98
E	CO93346	DLT	31 AUG 98
F	0018656	NM	21FEB06



3X 6-32 UNC X (.219)
BINDING HEAD COMBINATION
TERMINAL SCREW AND
CUPWASHER

NOTE
MOUNTING HOLES WILL ACCEPT PINS OR SCREWS
OF .139 MAX DIA ON 1.000 ± .002 CENTERS

THIS DRAWING COVERS A PROPRIETARY ITEM AND IS THE PROPERTY OF MICRO SWITCH, A DIVISION OF HONEYWELL. THIS DRAWING IS NOT TO BE COPIED OR USED WITHOUT THE APPROVAL OF MICRO SWITCH.

THIRD ANGLE PROJECTION

CHARACTERISTICS

OPERATING FORCE----- 6-10 OZ
RELEASE FORCE----- 4 OZ MIN
DIFFERENTIAL TRAVEL----.003--.007
OVERTRAVEL----- .010 MIN

ELECTRICAL DATA

CONTACT ARRANGEMENT
S P D T
L65 15A 125, 250 OR 480 VAC
1/2 HP 125 VAC, 1 HP 250 VAC
L288
L306
L315
16A 250V ~ T85 5E4

SCALE FULL

DO NOT SCALE PRINT

APPLY TO DESIGN UNITS. CONVERSIONS ARE ONLY FOR REFERENCE. UNLESS NOTED, TOLERANCES ARE ±

	DES. UNITS	TOL. mm	DES. UNITS	TOL. mm/in
NO PLACES	X	1/.04	X, X	0.0750
ONE PLACE	X, X	0.4/.010	X, X, X	0.25/.010
TWO PLACES	X, X, X	0.15/.005	X, X, X, X	0.127/.005
THREE PLACES	X, X, X, X			

DESIGN UNITS SI METRIC US CUSTOMARY

WEIGHT