

**MICRO SWITCH**  
a Honeywell Division

FED. MFG. CODE 91929

**SWITCH-BASIC**

CATALOG LISTING

**1XE301**

**MS-27994-5**

1XE301

**M**

DRAWING NUMBER

ISSUE

3

RELEASE NO. PR-11966 REPLACES

CHECK

CHECK

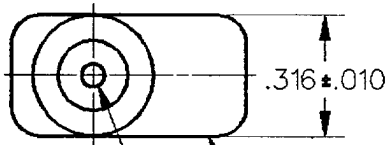
9 NOV '89

DRAWN

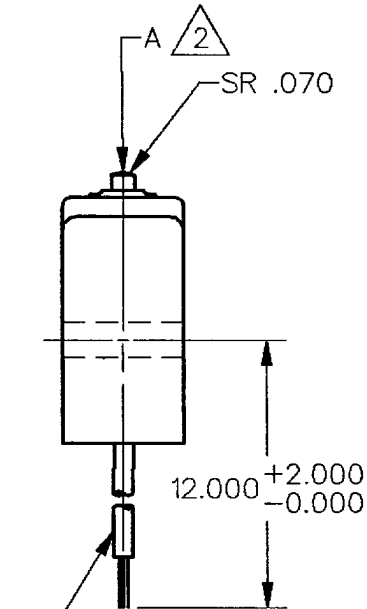
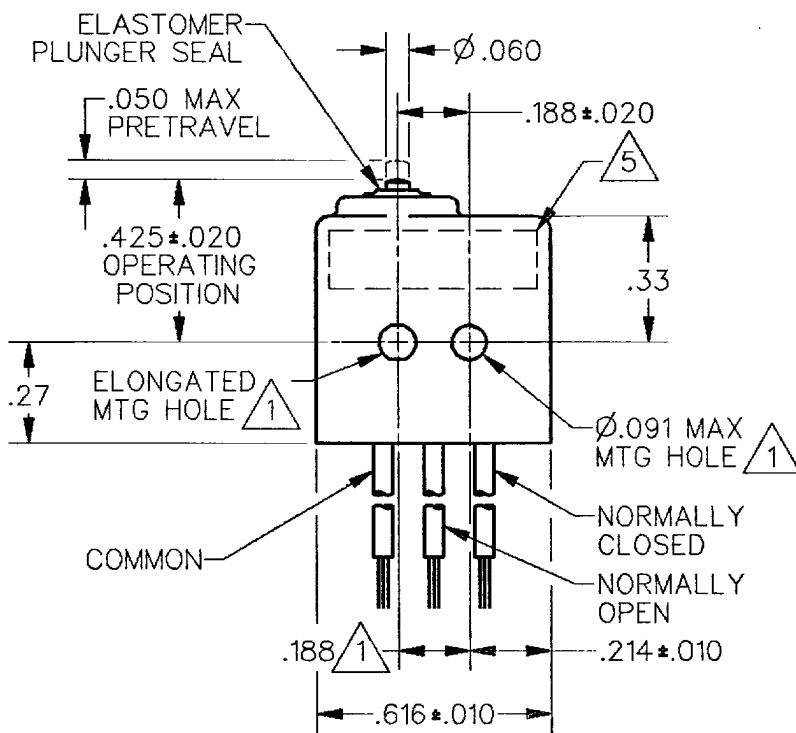
CHECK

2 NOV 89

DDM/CAD



CORROSION RESISTANT TREATED METAL ENCLOSURE  
CORROSION RESISTANT STEEL PLUNGER



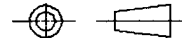
NO.20 WIRE LEAD PER M22759/11 EMBEDDED IN EPOXY CASTING RESIN (3)

NOTES

- ① MOUNTING HOLES WILL ACCEPT .087 MAX DIA PINS OR SCREWS ON .188±.002 CENTERS
- ② ACTUATION IN LINE WITH ARROW "A" IS RECOMMENDED
- ③ WEIGHT OF SWITCH ONLY IS .16 OZ MAX. WEIGHT OF SWITCH WITH WIRE LEADS IS .55 OZ MAX
- ④ CONTACT MATERIAL: 24K SOLID GOLD
- ⑤ YELLOW MARKING IS ON BOTH SIDES OF HOUSING TO IDENTIFY THAT THIS UNIT HAS GOLD CONTACTS

THIS DRAWING COVERS A PROPRIETARY ITEM AND IS THE PROPERTY OF MICRO SWITCH, A DIVISION OF HONEYWELL. THIS DRAWING IS NOT TO BE COPIED OR USED WITHOUT THE APPROVAL OF MICRO SWITCH.

THIRD ANGLE PROJECTION



CHARACTERISTICS	
OPERATING FORCE	5-17 OZ
RELEASE FORCE	4 OZ MIN
RELEASE TRAVEL	.004 MIN
DIFFERENTIAL TRAVEL	.005 MAX
OVERTRAVEL	.004 MIN

ELECTRICAL DATA	
CONTACT ARRANGEMENT S P D T	
28 VOLTS DC RATING	
INDUCTIVE	SEA LEVEL-1/2 AMP 50,000 FT-1/2 AMP
RESISTIVE	SEA LEVEL- 1 AMP 50,000 FT- 1 AMP

SCALE	2 : 1	DO NOT SCALE PRINT
<b>UNLESS OTHERWISE SPECIFIED TOLERANCES ARE</b>		
ONE PLACE	(.0)	±.030
TWO PLACE	(.00)	±.015
THREE PLACE	(.000)	±.005
ANGLES		±

WEIGHT ③