

MICRO SWITCH

A DIVISION OF MINNEAPOLIS-HONEYWELL REGULATOR COMPANY
 FREEPORT, ILLINOIS
 1-FED. MFR. CODE 91929

SWITCH - BASIC

CATALOG LISTING

IXEI-T ★

MILITARY STDS PART
 NO. MS-27994-3

IXEI-T

M

DRAWING
 NUMBER

X

ISSUE

84

REPLACES

RELEASE NO. SR 10065

15 FEB 62

CHECK E²L

15 FEB 62

CHECK JRH

19 FEB 62

CHECK E²L

13 FEB 62

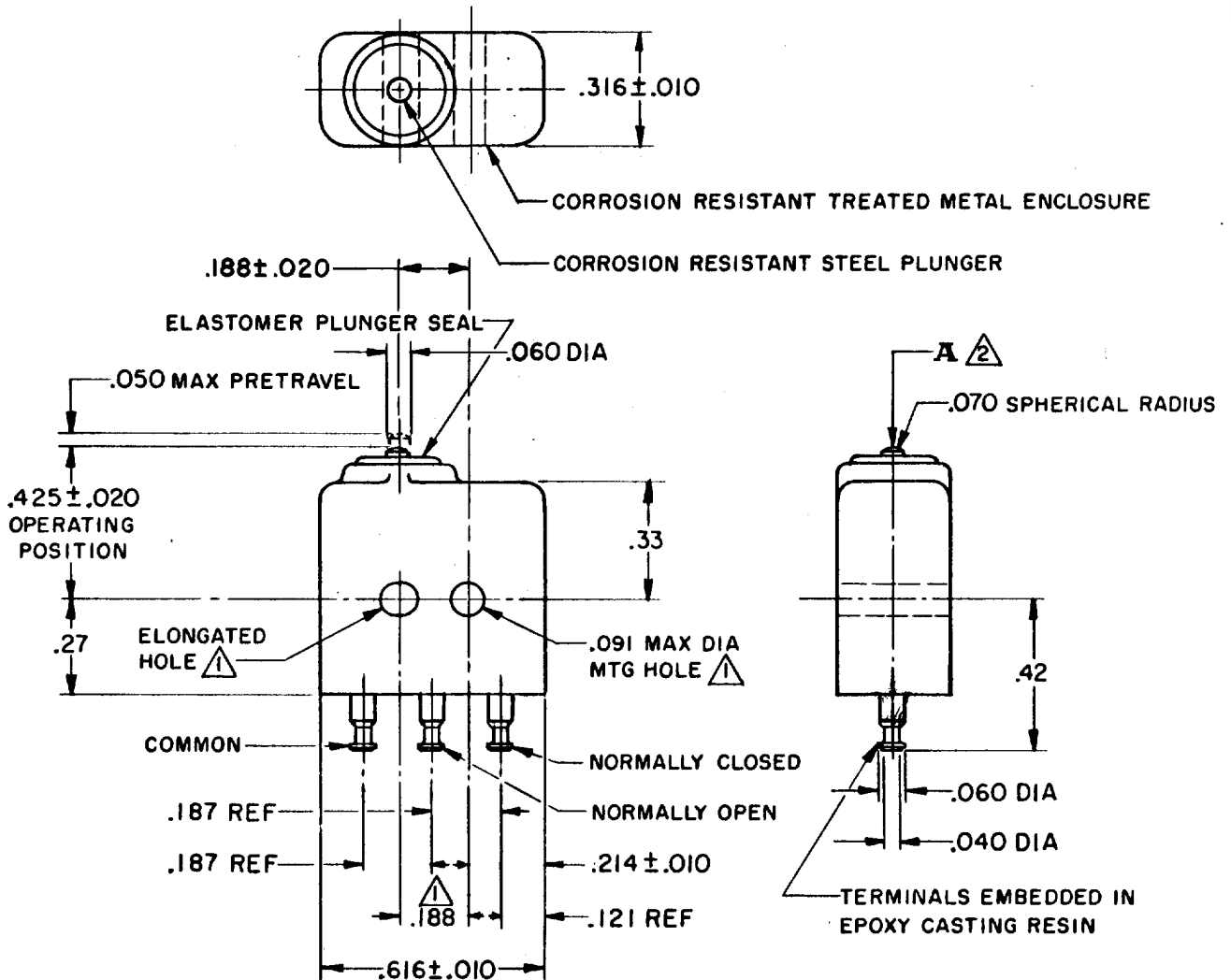
CHECK JRH

13 FEB 62

DRAWN

D W V

FO-50378



NOTE -

- ▲ MOUNTING HOLES WILL ACCEPT .087 MAX DIA PINS OR SCREWS ON $.188 \pm .002$ CENTERS
- ▲ ACTUATION IN LINE WITH ARROW "A" IS RECOMMENDED

THIS DRAWING COVERS A PROPRIETARY ITEM AND IS THE PROPERTY OF MICRO SWITCH, A DIVISION OF MINNEAPOLIS-HONEYWELL REGULATOR CO. THIS DRAWING IS NOT TO BE COPIED OR USED WITHOUT THE APPROVAL OF MICRO SWITCH.

CHARACTERISTICS

OPERATING FORCE ----- 5-17 OZ
 RELEASE FORCE ----- 4 OZ MIN
 RELEASE TRAVEL ----- .004 MIN
 DIFFERENTIAL TRAVEL ----- .005 MAX
 OVERTRAVEL ----- .004 MIN

ELECTRICAL DATA

CONTACT ARRANGEMENT	S	P	D	T
28 VOLTS DC RATING				
INDUCTIVE	SEA LEVEL	-----	4 AMP	
	50,000 FT	-----	2.5 AMP	
RESISTIVE	SEA LEVEL	-----	7 AMP	
	50,000 FT	-----	7 AMP	
LAMP MOTOR	SEA LEVEL	-----	1 AMP	
	" "	-----	2.5 AMP	
115 V 400 CYCLES ----- SEA LEVEL				
RESISTIVE	-----	7 AMP		
INDUCTIVE	-----	4 AMP		
LAMP	-----	1 AMP		
MOTOR	-----	1.5 AMP		

SCALE 2 TO 1

DO NOT SCALE PRINT

UNLESS OTHERWISE SPECIFIED
 DIMENSIONS ARE IN INCHES
TOLERANCES ARE:
 ONE PLACE (.0) ±.030
 TWO PLACE (.00) ±.015
 THREE PLACE (.000) ±.005
 ANGLES ±

WEIGHT .16 OZ MAX