

MITBI-2

DRAWING NUMBER

3 X

ISSUE

36

REVISIONS

A C09600

RER 20 FEB 68

B C033498

DBW 14 MAY 74

C C036022

RER 29 OCT 75

D C099824

JAS 18 SEPT 86

REPLACES

RELEASE NO.

CHECK

CHECK

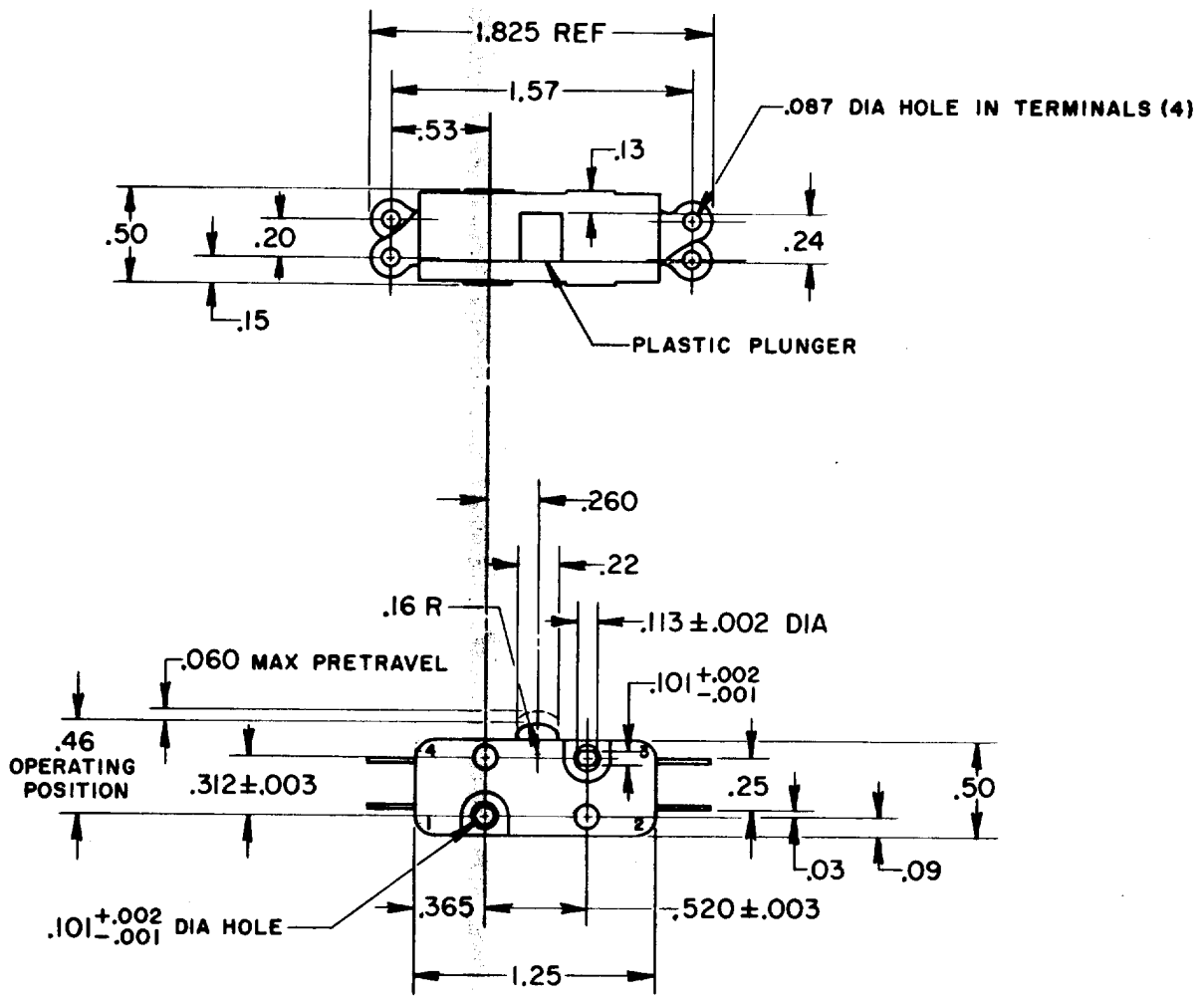
CHECK

CHECK

CHECK

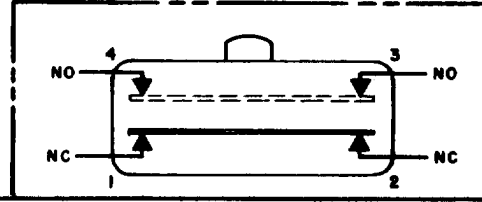
CHECK

DRAWN



NOTE -
 1 - TERMINALS 1 & 2 NORMALLY CLOSED CIRCUIT
 2 - TERMINALS 3 & 4 NORMALLY OPEN CIRCUIT
 3 - TERMINALS ARE PLATED FOR SOLDERING

CIRCUIT DIAGRAM



THIS DRAWING COVERS A PROPRIETARY ITEM AND IS THE PROPERTY OF MICRO SWITCH, A DIVISION OF MINNEAPOLIS-HONEYWELL REGULATOR CO. THIS DRAWING IS NOT TO BE COPIED OR USED WITHOUT THE APPROVAL OF MICRO SWITCH.

CHARACTERISTICS	ELECTRICAL DATA	SCALE FULL
OPERATING FORCE ----- 7-13 OZ	CONTACT ARRANGEMENT SEE CIRCUIT DIAGRAM	DO NOT SCALE PRINT
RELEASE FORCE ----- 4 OZ MIN	L25 10A - 125 OR 250 VAC 1/2HP - 125 VAC 	UNLESS OTHERWISE NOTED
DIFFERENTIAL TRAVEL ----- .010-.025		DIMENSIONS ARE IN INCHES
OVERTRAVEL ----- .010 MIN		TOLERANCES ARE: ONE PLACE (.0) ±.030 TWO PLACE (.00) ±.015 THREE PLACE (.000) ±.005 ANGLES ±
		WEIGHT .02 LB