



MICRO SWITCH

A DIVISION OF MINNEAPOLIS-HONEYWELL REGULATOR COMPANY

EMERSON, ILLINOIS

FED. MFR. CODE 91929

SWITCH-BASIC

SKETCH 15259
ISSUE 1

REPLACES

RELEASE NO. SR 6804

ISEI-T

DRAWING NUMBER

2

X

4

ISSUE

REVISIONS

A	CO-13435	
23	OMW MAR 59	
B	CO-18028	
14	MBF MAY 63	
C	CO-34213	
J	A L	
24	SEPT 74	

CHECK

3 AUG 63

CNT

CHECK

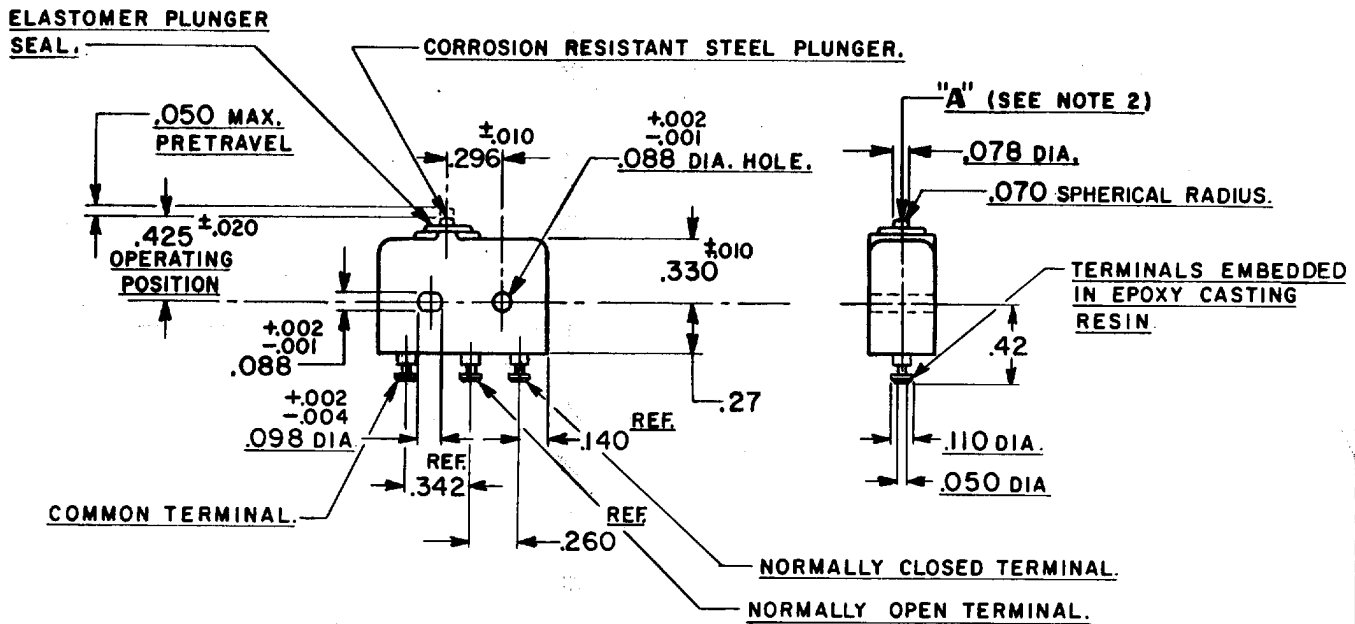
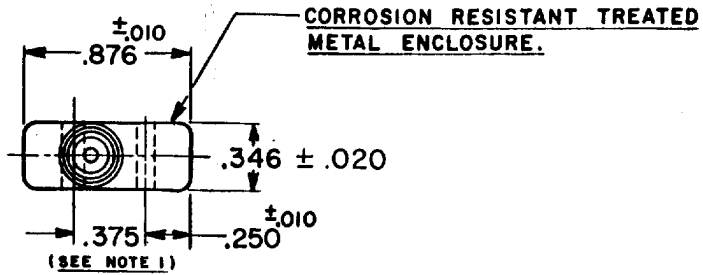
JRH 12 AUG 57

CHECK

57 R. E. R. 1 AUG 57

DRAWN

FO-50378



- NOTE -**
- 1-MOUNTING HOLES WILL ACCEPT .087 MAX. DIA. PINS OR SCREWS ON .375 ±.002 CENTERS.
 - 2-ACTUATION IN LINE WITH ARROW "A" IS RECOMMENDED.

THIS DRAWING COVERS A PROPRIETARY ITEM AND IS THE PROPERTY OF MICRO SWITCH, A DIVISION OF HONEYWELL. THIS DRAWING IS NOT TO BE COPIED OR USED WITHOUT THE APPROVAL OF MICRO SWITCH.

CHARACTERISTICS	ELECTRICAL DATA	SCALE - FULL
OPERATING FORCE ----- 5-17 OZ.	CONTACT ARRANGEMENT S. P. D. T.	DO NOT SCALE PRINT
RELEASE FORCE ----- 4 OZ. MIN.	250 VAC ----- 5 AMP 30 VOLTS DC RATING	UNLESS OTHERWISE SPECIFIED DIMENSIONS ARE IN INCHES TOLERANCES ARE:
RELEASE TRAVEL ----- .004 MIN.		
DIFFERENTIAL TRAVEL ----- .004 MAX	INDUCTIVE ----- SEA LEVEL ----- 3 AMP 50,000 FT. ----- 2.5 AMP	ONE PLACE (.0) ±.030
OVERTRAVEL ----- .003 MIN.	RESISTIVE ----- SEA LEVEL ----- 5 AMP 50,000 FT. ----- 5 AMP	TWO PLACE (.00) ±.015
	MAXIMUM INRUSH ----- 24 AMP	THREE PLACE (.000) ±.008
		ANGLES ±
		WEIGHT .26 OZ MAX (B)