

MICRO SWITCH

A DIVISION OF MINNEAPOLIS-HONEYWELL REGULATOR COMPANY
 FREDERICK, MARYLAND
 FED. MFR. CODE 91929

SWITCH-BASIC

CATALOG LISTING

1HS6

MILITARY STANDARD
 MS25011-4

(M) 1HS6
 ISSUE 6

REPLACES

1HS6

PAGE 1 OF 1

M

DRAWING
 NUMBER

17

ISSUE

RELEASE NO.

CHECK

REVISIONS

A C094121
 DLT
 2 APR 99

CHECK

CHECK

CHECK

CHECK

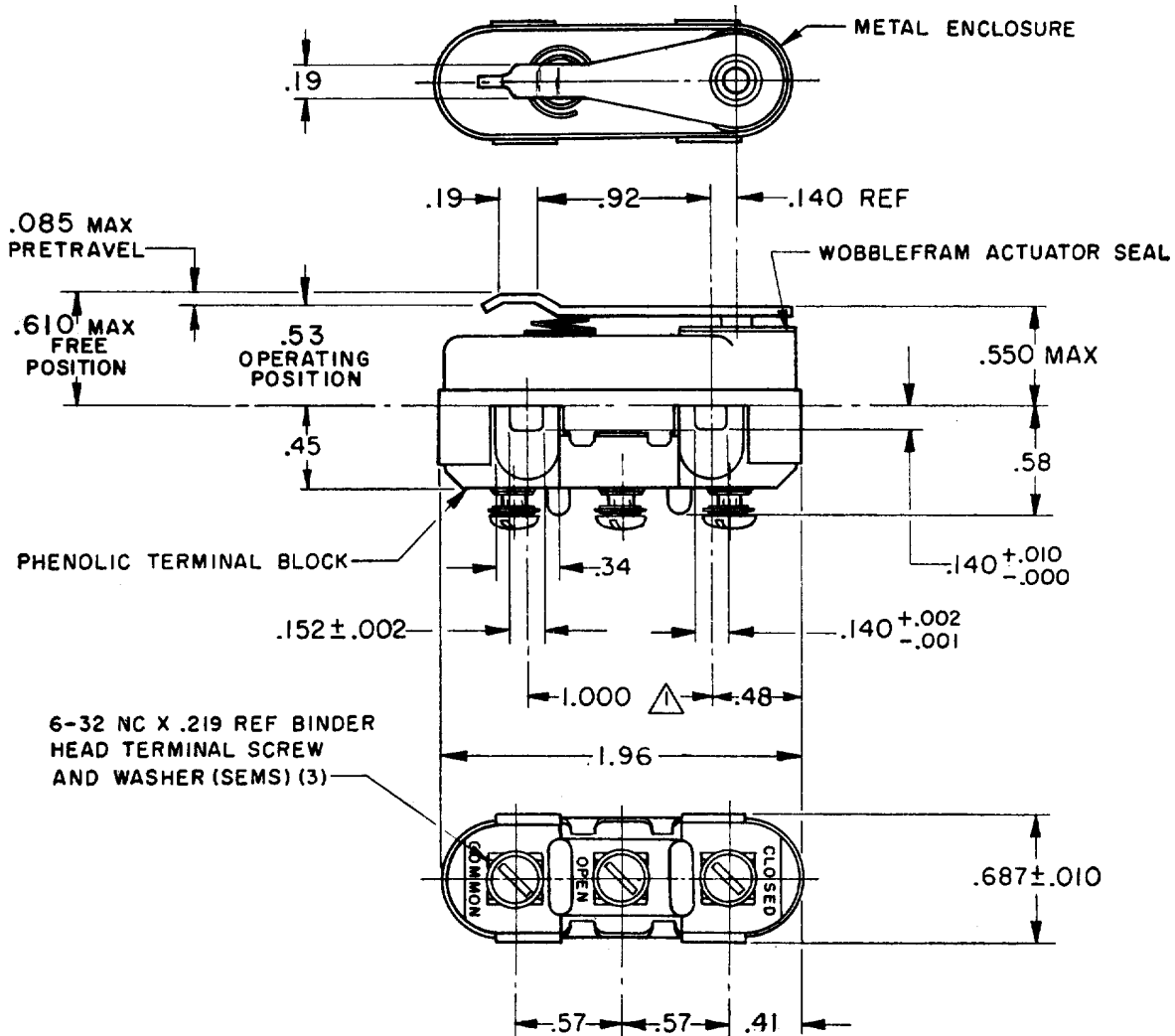
CHECK

CHECK

CHECK

CHECK

CHECK



NOTES

- ▲ MOUNTING HOLES WILL ACCEPT PINS OR SCREWS OF .139 MAX DIA ON 1.000 ± .002 CENTERS
- 2 - TRAVEL CHARACTERISTICS ARE REFERENCED FROM THE UPPER SURFACE OF THE MOUNTING HOLES WITH THIS CONSTRUCTION
- 3 - FOR USE IN AMBIENT TEMPERATURE RANGE FROM MINUS 65° TO PLUS 250°F

THIS DRAWING COVERS A PROPRIETARY ITEM AND IS THE PROPERTY OF MICRO SWITCH, A DIVISION OF MINNEAPOLIS-HONEYWELL REGULATOR CO. THIS DRAWING IS NOT TO BE COPIED OR USED WITHOUT THE APPROVAL OF MICRO SWITCH.

CHARACTERISTICS	
OPERATING FORCE	22-28 OZ
RELEASE FORCE	4 OZ MIN
DIFFERENTIAL TRAVEL	.020 MAX
OVERTRAVEL	.010 MIN

ELECTRICAL DATA			
CONTACT ARRANGEMENT S P D T			
LOAD	CURRENT CAPACITY (AMPERES)		
	28 VDC	115 VAC, 60 HZ	120 VDC
RESISTIVE	25	1	.5
INDUCTIVE	8	1	.5

SCALE FULL		
DO NOT SCALE PRINT		
UNLESS OTHERWISE SPECIFIED DIMENSIONS ARE IN INCHES		
TOLERANCES ARE:		
ONE PLACE	(.0)	±.030
TWO PLACE	(.00)	±.015
THREE PLACE	(.000)	±.005
ANGLES		±

-L277- 5A-28 VDC WEIGHT 1.6 OZ MAX

FORMTEK
 FO-50378

DRAWN
 LMH 14 SEP 60

CHECK
 GCH 22 SEP 60