

# MICRO SWITCH

FREERPORT ILLINOIS, U.S.A  
A DIVISION OF HONEYWELL

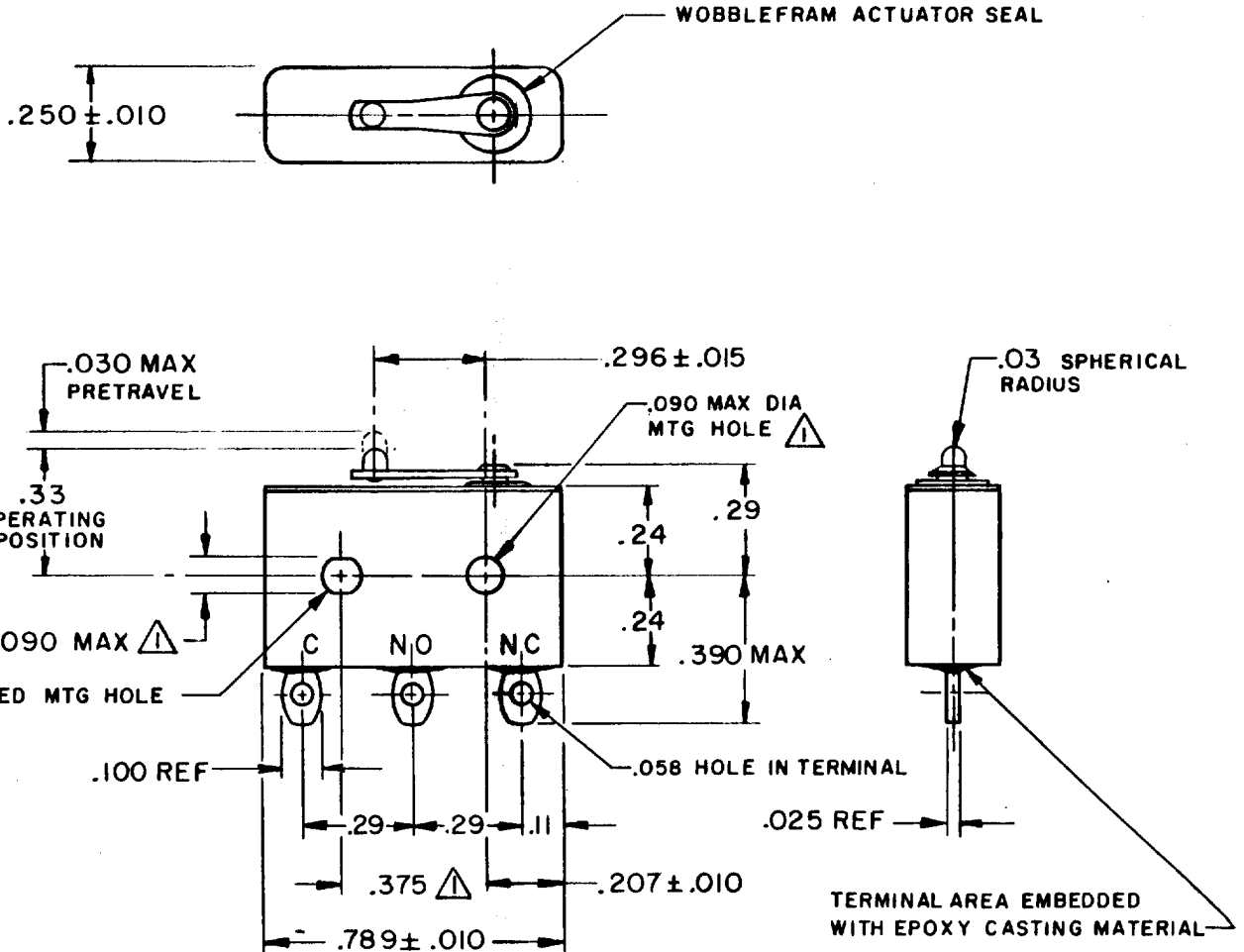
FED. MFG. CODE 91929

# SWITCH-BASIC

CATALOG LISTING

## 11HM1

MILITARY STANDARD  
MS 27216-5



**NOTE -**

- △ MOUNTING HOLES WILL ACCEPT PINS OR SCREWS OF .087 MAX DIA ON .375 ± .002 CENTERS
- 2 - FOR USE IN TEMPERATURE RANGE -300° F TO + 250° F
- 3 - HERMETICALLY SEALED (METAL-TO-METAL, GLASS-TO-METAL)
- 4 - ALL EXPOSED PARTS ARE OF CORROSION RESISTANT MATERIALS
- 5 - TERMINALS ARE TINNED FOR SOLDERING
- 6 - DO NOT APPLY MORE THAN 1 1/2 INCH-POUNDS OF TORQUE WHEN TIGHTENING MOUNTING SCREWS
- 7 - SWITCH WITH REMAIN FUNCTIONAL AFTER BEING SUBJECTED TO THE SHOCK OF MIL-S-901 GRADE A, SUBASSEMBLY, CLASS I, LIGHTWEIGHT TYPE C

THIS DRAWING COVERS A PROPRIETARY ITEM AND IS THE PROPERTY OF MICRO SWITCH, A DIVISION OF HONEYWELL. THIS DRAWING IS NOT TO BE COPIED OR USED WITHOUT THE APPROVAL OF MICRO SWITCH.

CHARACTERISTICS	ELECTRICAL DATA			SCALE 2 TO 1
OPERATING FORCE ----- 7 OZ MAX	CONTACT ARRANGEMENT SPDT			DO NOT SCALE PRINT
RELEASE FORCE ----- 1 OZ MIN	LINE VOLTAGE	INDUCTIVE LOAD	RESISTIVE LOAD	UNLESS OTHERWISE NOTED DIMENSIONS ARE IN INCHES <b>TOLERANCES ARE</b> ONE PLACE (.01) ± .030 TWO PLACE (.00) ± .015 THREE PLACE (.000) ± .005 ANGLES ± WEIGHT .014 LB MAX
DIFFERENTIAL TRAVEL ----- .006 MAX	SEA LEVEL- 70,000 FT. 28 VDC	1 AMP	3 AMP	
OVERTRAVEL ----- .003 MIN	SEA LEVEL 115 (400 CYCLE)	1 AMP	1 AMP	

11HM1  
 M  
 DRAWING NUMBER  
 X 5  
 ISSUE  
 X 4  
 REPLACES  
 RELEASE NO. PR-4613  
 CHECK  
 REVISIONS  
 A CO-32230  
 BEN  
 23 JUL 73  
 B PR-4613  
 J A L  
 23 DEC 74  
 C CO45333  
 S J B  
 4 MAY 79  
 D CO71228  
 DAW  
 29 OCT 91  
 CHECK  
 27 JUNE 72  
 26 JUNE 72  
 23 JUN 72  
 DRAWN  
 GM  
 FO-52848