



SPC  
TECHNOLOGY

ALL RIGHTS RESERVED. NO PORTION OF THIS PUBLICATION, WHETHER IN WHOLE OR IN PART CAN BE REPRODUCED WITHOUT THE EXPRESS WRITTEN CONSENT OF SPC TECHNOLOGY.

SPC-F005.DWG

REVISIONS

DCP #	REV	DESCRIPTION	DOC. NO.	DATE	CHECKD	DATE	APPRVD	DATE
			SPC-F005	16-08-10	SHA	16-08-10	JAG	XXX



Specifications

Electrical/mechanical:

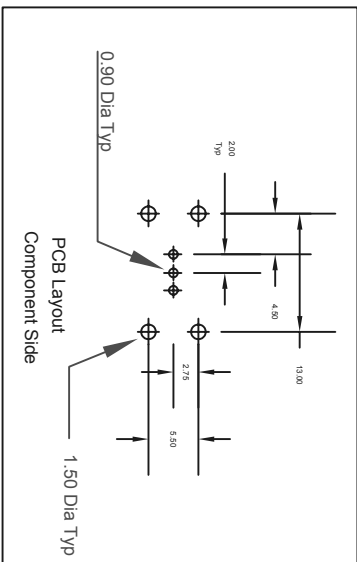
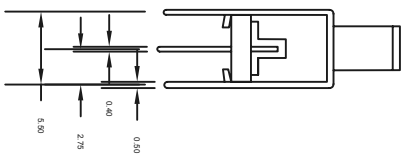
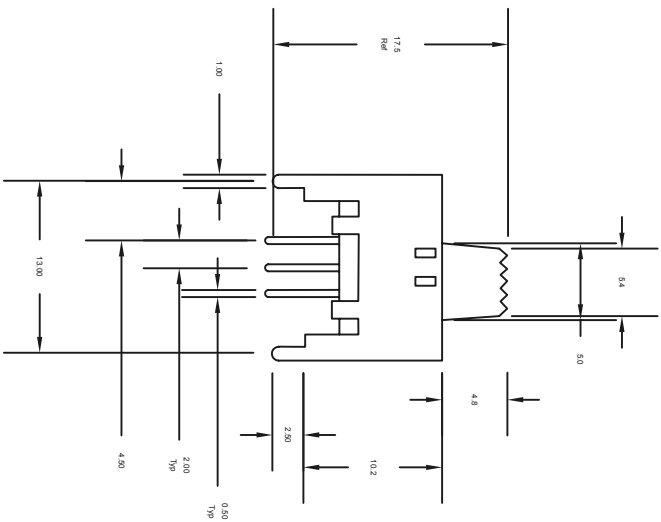
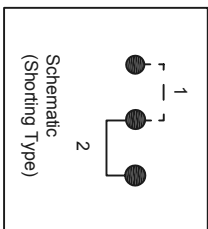
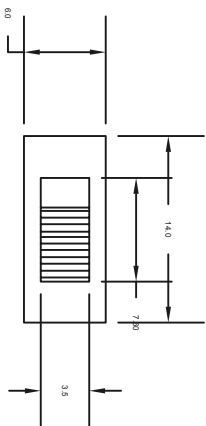
- Type: Upright, thru hole
- Contact Timing: Shorting Type, make before break
- Contact Rating: 300mA at 125VAC
- Termination: PCB Mount
- Insulation resistance: 100 megohms minimum at 500VDC
- Dielectric Strength: 500 VRMS
- Actuation Force: 400 ±150 grams
- Operating Life: 15,000 cycles

Materials:

- Housing: steel, bright tin plated
- Base: Phenolic
- Actuator: PBT, UL94V-0
- Moving contacts: phosphor bronze, gold plated

Environmental:

Operating Temperature: -40°C to 85°C



Dimensions : Inches (mm)

Part Number Table

Description	Part Number
Slide Switch, SPDT, PCB Mount	SPC21122

TOLERANCES:

UNLESS OTHERWISE SPECIFIED, DIMENSIONS ARE FOR REFERENCE PURPOSES ONLY.

DRAWN BY:

SHA

DATE:

16-08-10

CHECKED BY:

JAG

DATE:

XXX

APPROVED BY:

XXX

SCALE:

NTS

U.O.M.:

INCHES [mm]

SHEET:

1 OF 1

DRAWING TITLE: Slide Switch, SPDT, PCB Mount

ELECTRONIC FILE

53H6686

REV A

DISCLAIMER: ALL STATEMENTS AND TECHNICAL INFORMATION CONTAINED HEREIN ARE BASED UPON INFORMATION AND/OR TESTS WE BELIEVE TO BE ACCURATE AND RELIABLE. SINCE CONDITIONS OF USE ARE BEYOND OUR CONTROL, THE USER SHALL DETERMINE THE SUITABILITY OF THE PRODUCT FOR THE INTENDED USE AND ASSUME ALL RISK AND LIABILITY WHATSOEVER IN CONNECTION THEREWITH.