



SPC  
TECHNOLOGY

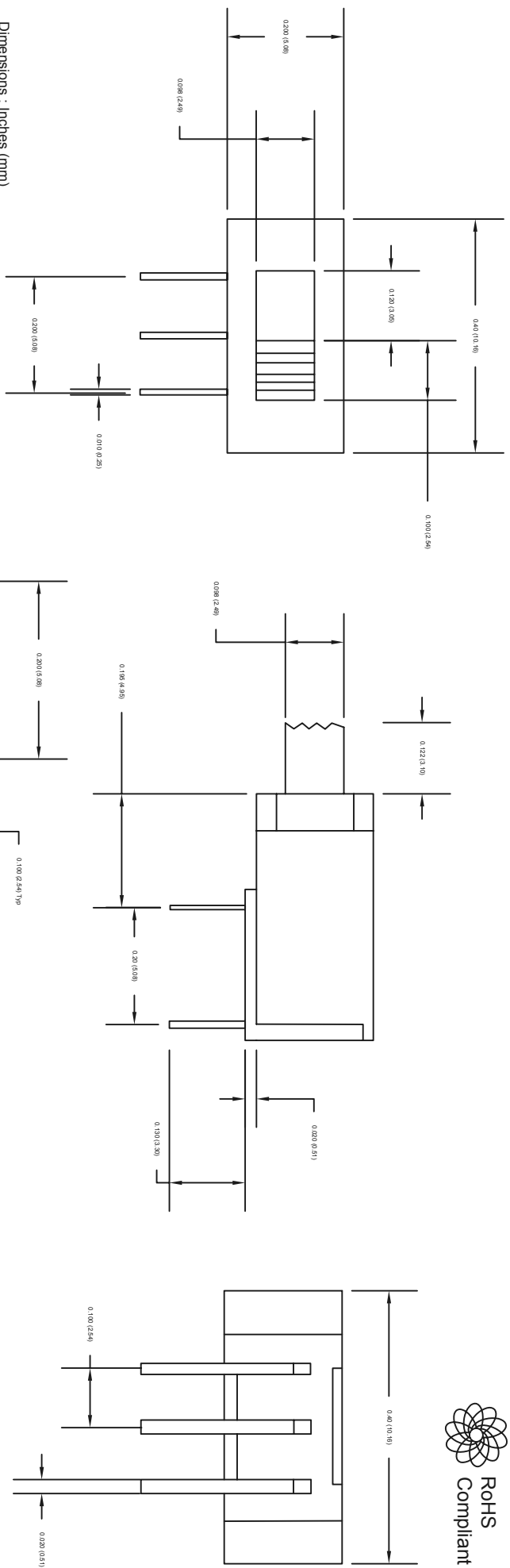
ALL RIGHTS RESERVED. NO PORTION OF THIS PUBLICATION, WHETHER IN WHOLE OR IN PART CAN BE REPRODUCED WITHOUT THE EXPRESS WRITTEN CONSENT OF SPC TECHNOLOGY.

SPC-F005.DWG

REVISIONS

DCP #	REV	DESCRIPTION	DRAWN	DATE	CHECKD	DATE	APPRVD	DATE
			SHA	13-08-10	MRD	20-08-10	XXX	27-08-10

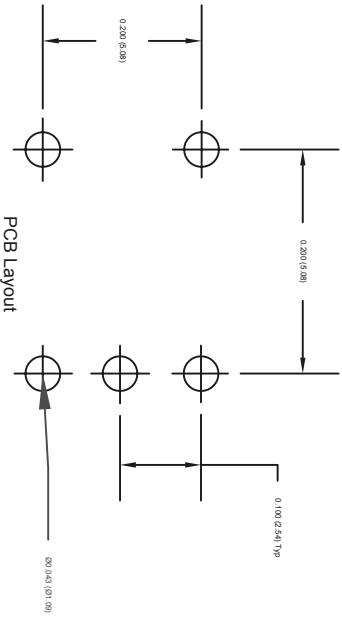
DOC. NO. SPC-F005 \* Effective: 7/8/02 \* DCP No: 1398



Dimensions : Inches (mm)

Conn. Terms	Switching Position		
	On	Off	On
2-1	On	Off	On
2-3	Open	Open	On

Non-Shorting Type



Part Number Table

Description	Part Number
Slide Switch, Miniature, SPDT PCB Mount	SPC21121

- Specifications
- Electrical/Mechanical**
- Type: Right Angle, Through Hole
  - Contact Rating: Non-shorting, break before make
  - Contact Rating: 0.4 VA Maximum at 20 V Maximum (AC or DC)
  - Termination: PC Mount
  - Contact Resistance: 10 milliohms maximum
  - Insulation Resistance: 1,000 Megohms minimum at 500 VDC
  - Dielectric Strength: 1,000 VRMS
  - Life: 30,000 Cycles
- Material**
- Housing: Stainless Steel
  - Base: Phenolic, UL 94V-0
  - Actuator: Nylon
  - Moving Contacts: Phosphor Bronze, Gold Plated
  - Fixed Contacts/Terminals: Copper Alloy, Gold Plated
- Environmental**
- Operating Temperature: -30°C to 85°C

TOLERANCES:

UNLESS OTHERWISE SPECIFIED, DIMENSIONS ARE FOR REFERENCE PURPOSES ONLY.

DRAWING TITLE: Slide Switch, Miniature, SPDT PCB Mount

DRAWN BY:	DATE:
SHA	13-08-10
CHECKED BY:	DATE:
MRD	20-08-10
APPROVED BY:	DATE:
XXX	27-08-10

DRAWING TITLE:	SIZE	DWG. NO.	ELECTRONIC FILE	REV
Slide Switch, Miniature, SPDT PCB Mount	XXX	53H6878	53H6878	A
SCALE:	NTS	U.O.M.: INCHES [mm]	SHEET:	1 OF 1

DISCLAIMER:  
ALL STATEMENTS AND TECHNICAL INFORMATION CONTAINED HEREIN ARE BASED UPON INFORMATION AND/OR TESTS WE BELIEVE TO BE ACCURATE AND RELIABLE. SINCE CONDITIONS OF USE ARE BEYOND OUR CONTROL, THE USER SHALL DETERMINE THE SUITABILITY OF THE PRODUCT FOR THE INTENDED USE AND ASSUME ALL RISK AND LIABILITY WHATSOEVER IN CONNECTION THEREWITH.