

## Series SE1022

### DOUBLE POLE LINE VOLTAGE SELECTOR SWITCHES

This rugged fully enclosed housing is built for tough applications. The positive detect action, status indication and variety of contact configurations make this series ideal for a variety of needs.



ACTUAL SIZE

### APPLICATIONS

- Consumer power supplies
- Lower cost dual use power supplies

### KEY FEATURES:

- Status indication: variety of markings available
- Variety of terminal styles
- Electrical life: 10,000 cycles
- UL recognized and CSA certified and VDE approved
- Variety of mounting styles
- Silver plated contacts

### ORDERING INFORMATION:

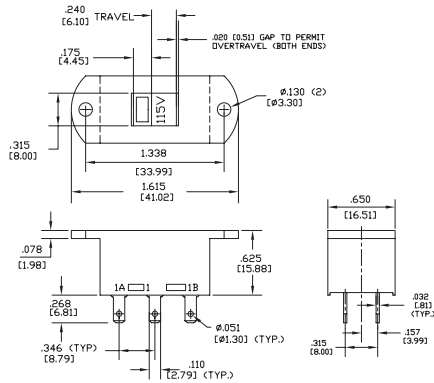
Part Number	Terminals	Dimensions	Marking
18-000-0016	.110 quick connect	1.615 L x .650 W x .625 H	230V/115V
18-000-0019	Right angle	1.030 L x .650 W x .625 H	230V/115V
18-000-0022	PC	1.030 L x .650 W x .625 H	230V/115V
18-000-0040	.110 quick connect	Snap in: .677 x 1.240 Cut out *	230V/115V

\* It is recommended that panel thickness range from .015 to .125" (.038 to 3.18 mm) with switch cut-out punched from front of panel.

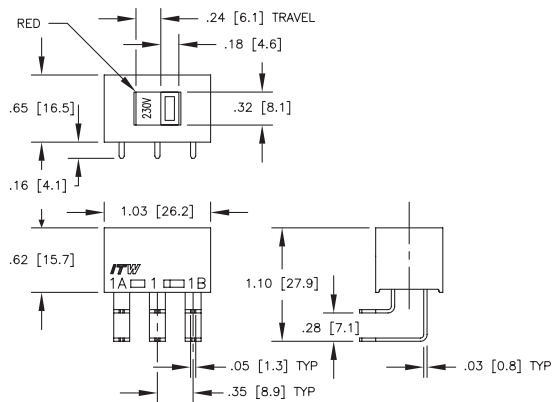
### STANDARDS / AGENCY / RATINGS:



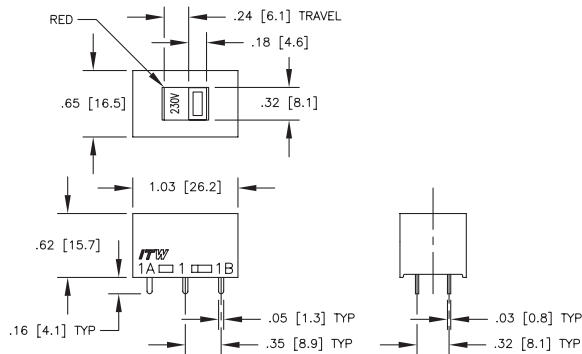
## 18-000-0016



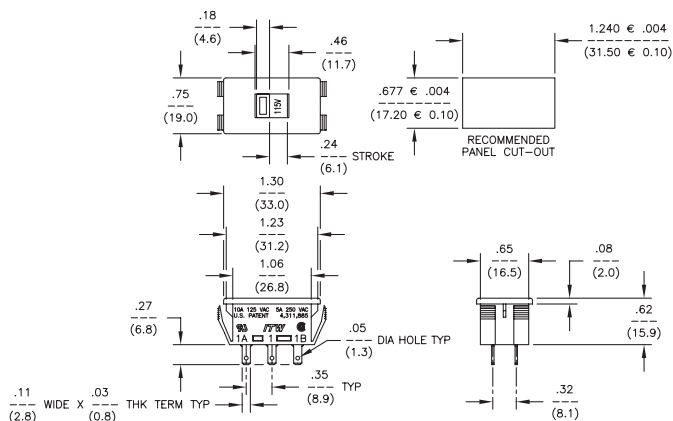
## 18-000-0019



## 18-000-0022



## 18-000-0040



## MECHANICAL / ELECTRICAL CHARACTERISTICS:

**Circuit:**  
DPDT (Form CC)

**Electrical life:**  
10,000 cycles

**Housing/actuator:**  
Nylon 94 V0

**Terminal base:**  
phenolic laminate

**Terminals:**  
silver plated copper

**Electrical ratings:**

Circuitry	Current	Voltage
DPDT*	10 Amp	125 VAC
DPDT*	5 Amp	250 VAC
DPDT**	10 Amp	125 VAC-T85
DPDT**	5 Amp	250 VAC-T85

\* UL and CSA recognized  
\*\* VDC recognized