

Drq. No.: 1059600495

Title: SPECIFICATION

Used On: 59600-495

DESCRIPTION: - Single Pole Form A Proximity Device.  
 CONSTRUCTION: - Encapsulated in a Moulded Plastic Body.

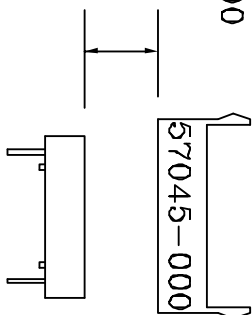
CUSTOMER: -  
 CUSTOMER DRG. No.: -

ELECTRICAL

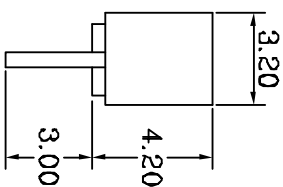
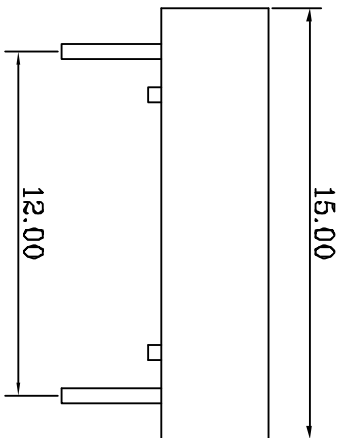
Maximum Switched Current 0.5A  
 Maximum Switched Voltage 200Vdc  
 Maximum Switched Power 10W  
 Maximum Initial Contact Resistance  
 (inc. leadouts) 100mΩ  
 Maximum Carry Current 0.8A  
 Minimum Insulation Resistance 10<sup>10</sup>Ω  
 Min. Voltage Holdoff 250Vdc

PHYSICAL

Body Material: - Celanex - Black  
 Encapsulant: - Urethane - Black  
 Leadouts: - Ø0.47mm, Tinned  
 Operation  
 Actuator: - 57045-000  
 Operate Distance: - > 2mm  
 Release Distance: - < 14mm



FOR CONDITIONS OF TESTING REFER TO DRG. No. 30.003  
 GENERAL TOLERANCES ±0.13mm UNLESS STATED OTHERWISE



MOD. No.	DATE	ISSUE No.	MOD. No.	DATE	ISSUE No.	Doc. Ret. Code: D

© HAMILIN ELECTRONICS (EUROPE) LTD.  
 2002

Drawn *PAT* Issued

Sheet 1 of 1 Sheet(s)  
 Dimensions: mm Scale: 4 : 1  
 Date: 09.12.02 File: A

THIS DESIGN AND PRINT IS COPYRIGHT AND IS THE PROPERTY OF HEBEL. IT MUST NOT BE COPIED OR PERMITTED TO BE COPIED, NOR MUST ITS CONTENTS BE DIVULGED TO ANY THIRD PARTY WITHOUT PRIOR WRITTEN PERMISSION FROM THE COMPANY.

Drq. No.: 1059600495