

**RAFIX 22 QR keylock switch**



**2**

**Technical data**

**General information**

Form of lens see order block  
 Colour of front ring see order block  
 Form of collar see order block

**Dimensions**

Length of collar see order block  
 Width of collar see order block  
 Overall height 30.6 mm  
 Mounting depth with contact block without cable 56.4 mm  
 Mounting hole 22.3 mm  
 Key grid 50 x 30 mm  
 Diameter of collar see order block

**Mechanical design**

Mounting ring nut  
 Contact function see order block  
 Illuminability no  
 Lock Ronis  
 Wafers 4  
 Lock type 455  
 Main key no  
 Symmetric key no  
 Rotating angle see order block  
 Key removal position see order block

**Mechanical characteristics**

Operating force max. approx. 5 N for 1 switching element  
 Torque max. 2 Nm

**Electrical characteristics**

Protection class II

**Other specifications**

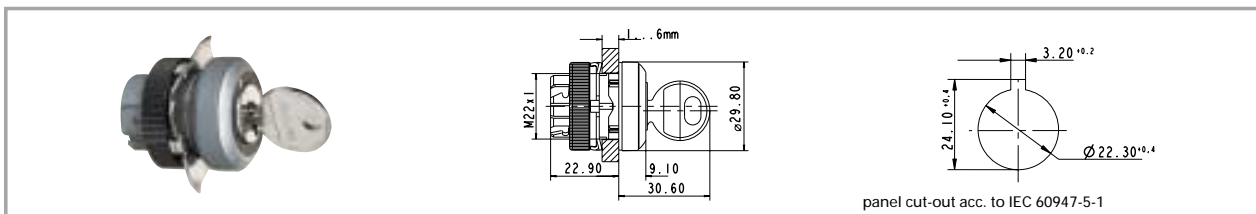
Operating life 0.3 million momentary / 50000 latching  
 Degree of protection from front side IP65  
 Ambient temp. operating min. -25 °  
 Ambient temp. operating max. +70 °  
 Storage temperature min. -40 °C  
 Storage temperature max. +80 °C  
 Resistance to constant environment according to IEC 600 68-2-3 and 2-30  
 Resistance at variable environment according to IEC 600 68-2-14 and 2-33

RAFIX 22 QR

**Accessories RAFIX 22 QR keylock switch**

Description	Photo	Order no.	Page
RAFIX 22 QR contact block with silver contacts, with coupling, without lamp socket, screw terminals, 1 NC + 1 NO		<b>1.20.124.017/0000</b>	2 - 140
RAFIX 22 QR contact block with silver contacts, with coupling, without lamp socket, cage clamp terminals, 1 NO		<b>1.20.125.002/0000</b>	2 - 140
Contact block with coupling, gold contacts, RJ 12 connector, 1 NC + 1 NO, without LED		1.20.128.003/0000	2 - 147
Label holder, round collar, with adhesive tape and release liner on back		5.07.620.010/0000	2 - 157
Spare key for RAFIX 22 QR		5.58.017.001/0000	

**RAFIX 22 QR keylock switch, round collar**



Contact function	Rotating angle	Key removal position	Rotating angle	Order no.	
				Plastic front ring	Metal front ring
momentary	1 x 40°	0		1.30.245.001/xxxx	<b>1.30.245.002/0000</b>
momentary	2 x 40°	0		1.30.245.101/xxxx	1.30.245.102/0000
latching 1 x 90° and momentary 1 x 40°	1 x 90° and 1 x 40°	0		1.30.245.501/xxxx	1.30.245.502/0000
latching 1 x 90° and momentary 1 x 40°	1 x 90° and 1 x 40°	0+2		1.30.245.521/xxxx	1.30.245.522/0000
latching	1 x 90°, form L	0		1.30.245.201/xxxx	<b>1.30.245.202/0000</b>
latching	1 x 90°, form L	0+1		1.30.245.221/xxxx	<b>1.30.245.222/0000</b>
latching	1 x 90°, form V	0		1.30.245.301/xxxx	<b>1.30.245.302/0000</b>
latching	1 x 90°, form V	0+1		1.30.245.321/xxxx	<b>1.30.245.322/0000</b>
latching	2 x 60°	0+1+2		1.30.245.731/xxxx	<b>1.30.245.732/0000</b>
latching	2 x 90°	0		1.30.245.401/xxxx	1.30.245.402/0000
latching	2 x 90°	0+1+2		1.30.245.431/xxxx	1.30.245.432/0000

2

RAFIX 22 QR

Technical data see page 2 - 116

xxxx = Front ring colour: black = 0100, slate grey = 0700, silver grey = 0800.

Other versions on request.

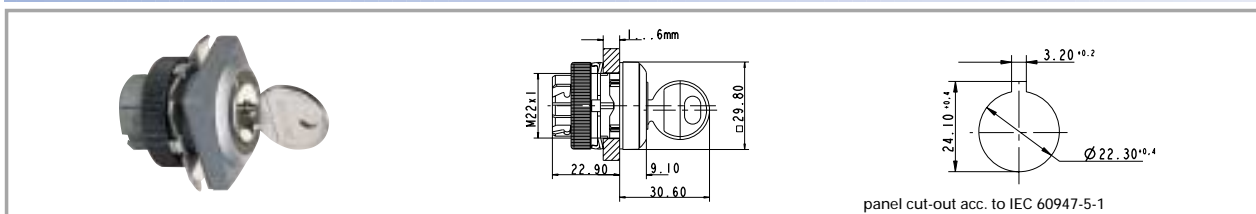
Included: Ring nut with claw.

On selector switches with 3 switching positions (e.g. 2 x 90 degrees), either the left-hand or right-hand contact block is activated, depending on the sense of rotation. A third contact block arranged in the centre would be actuated with either sense of rotation.

The following keylock switches with silver grey plastic front ring are stock items:

**1.30.245.001/0800, 1.30.245.201/0800, 1.30.245.221/0800, 1.30.245.301/0800, 1.30.245.321/0800, 1.30.245.731/0800**

**RAFIX 22 QR keylock switch, square collar**



**2**

Contact function	Rotating angle	Key removal position	Rotating angle	Order no.	
				Plastic front ring	Metal front ring
momentary	1 x 40°	0		1.30.245.051/xxxx	<b>1.30.245.052/0000</b>
momentary	2 x 40°	0		1.30.245.151/xxxx	1.30.245.152/0000
latching 1 x 90° and momentary 1 x 40°	1 x 90° and 1 x 40°	0		1.30.245.551/xxxx	1.30.245.552/0000
latching 1 x 90° and momentary 1 x 40°	1 x 90° and 1 x 40°	0+2		1.30.245.571/xxxx	1.30.245.572/0000
latching	1 x 90°, form L	0		1.30.245.251/xxxx	<b>1.30.245.252/0000</b>
latching	1 x 90°, form L	0+1		1.30.245.271/xxxx	<b>1.30.245.272/0000</b>
latching	1 x 90°, form V	0		1.30.245.351/xxxx	<b>1.30.245.352/0000</b>
latching	1 x 90°, form V	0+1		1.30.245.371/xxxx	<b>1.30.245.372/0000</b>
latching	2 x 60°	0+1+2		1.30.245.781/xxxx	<b>1.30.245.782/0000</b>
latching	2 x 90°	0		1.30.245.451/xxxx	1.30.245.452/0000
latching	2 x 90°	0+1+2		1.30.245.481/xxxx	1.30.245.482/0000

Technical data see page 2 - 116

xxxx = Front ring colour: black = 0100, slate grey = 0700, silver grey = 0800.

Other versions on request.

Included: Ring nut with claw.

On keylock switches with 3 switching positions (e.g. 2 x 90 degrees), either the left-hand or right-hand contact block is activated, depending on the sense of rotation. A third contact block arranged in the centre would be actuated with either sense of rotation.

The following keylock switches with silver grey plastic front ring are stock items:

**1.30.245.051/0800, 1.30.245.251/0800, 1.30.245.271/0800, 1.30.245.351/0800, 1.30.245.371/0800, 1.30.245.781/0800**