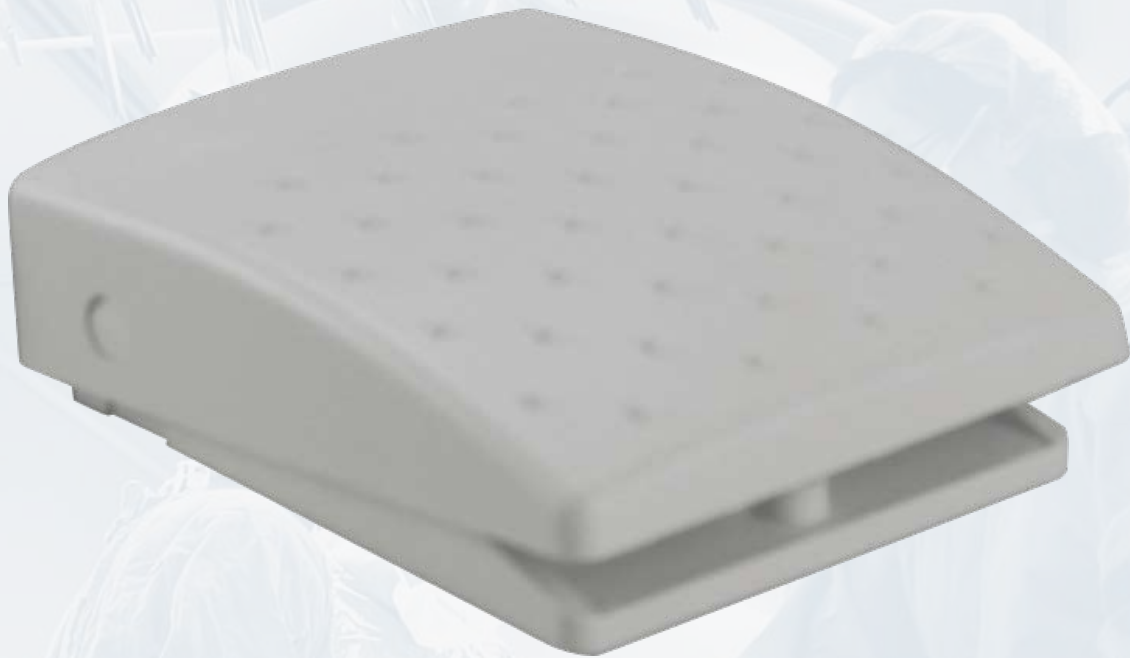


# **SLIM-LINE**

## **FOOT CONTROL**



**Engineered with an eagle eye on quality and value, the new Slim-Line foot switch from LINEMASTER® soars above the rest. With the choice of SPDT, SPDT (2 stage) or DPDT the Slim-Line foot**

**switch is a versatile solution for applications requiring a precision lightweight or medium weight foot control. Form follows function in the Slim-Line's small size, graceful curves and patented design, while non-skid feet and raised dimples ensure positive**

**performance. Designed to be fully submersible in water or cleaning solution. The Slim-Line foot switch is available in a reinforced polymeric material. You can count on the famous consistency and familiar action you get with every LINEMASTER® Switch.**

LINEMASTER Switch Corporation  
Tel (860) 974-1000

29 Plaine Hill Road, P.O. Box 238  
Fax (860) 974-0691

Woodstock, Connecticut 06281-0238 USA  
Fax (800) 974-FOOT(3668) Toll Free US Only

**[www.linemaster.com/ds/slimline](http://www.linemaster.com/ds/slimline)**

# R E S T E A S Y

KNOWING THE SLIM-LINE IS UNDER FOOT



**EN 60529 Degree of Protection IP20 (IP68 Upon Request)**

**Driptight • Dusttight • Watertight • Corrosion Resistant**  
**SMALL LIGHTWEIGHT LOW PROFILE DESIGN**

## Materials of Construction:

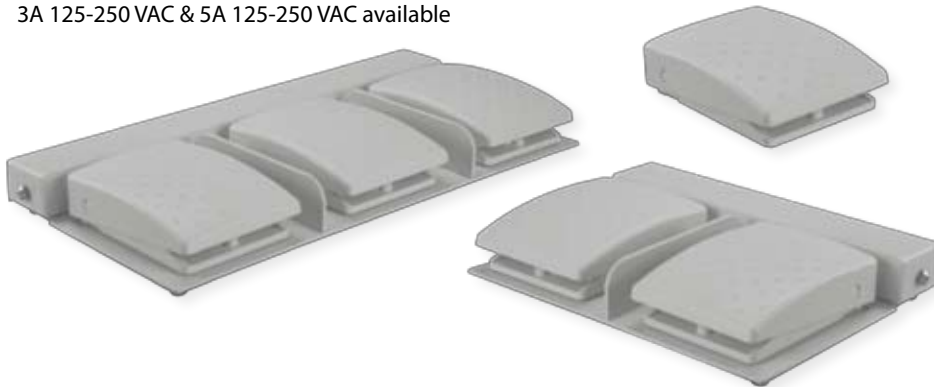
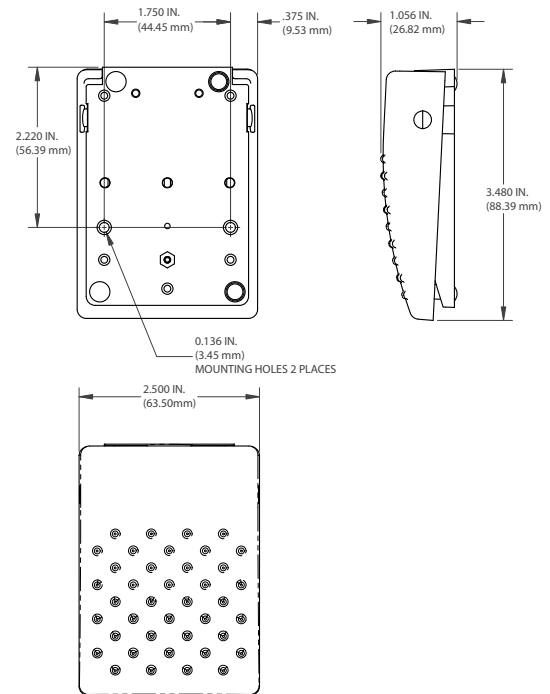
- Cover & Base formed from Light Gray (PMS 427C) ABS Polymeric Material
- Non-glare finish
- Silver Alloy contacts
- SPDT, DPDT, Two-Stage, Momentary Operation
- Integrated adjustable strain relief clamp accommodates cord sizes from .250 Dia. to .400 Dia.

## Features & Benefits:

- Maximum versatility, total performance in a small package
- Rustproof and corrosion resistant
- Mounting holes provided for rigid mounting to floor or equipment
- Non-Skid Feet
- Raised Dimples on treadle for positive traction during operation
- 10A 125-250 VAC ratings
- Designed to meet UL, CSA & CE requirements

## Options:

- Custom colors and color matching available with quantity orders
- Fully submersible in water (IP68 Only)
- Twin & Triple models available
- Full & Twin Guards as well as accessory base units available for configurations using multiple switches
- Custom connectivity options including Universal Serial Bus (USB)
- Custom cabling options
- 3A 125-250 VAC & 5A 125-250 VAC available



|               |                        |
|---------------|------------------------|
| Single        |                        |
| Size (HxWxD): | 1.05 x 2.50 x 3.48 In. |
| Weight:       | 3.7 oz.                |
| Twin          |                        |
| Size (HxWxD): | 2.0 x 11.75 x 6.0 In.  |
| Weight:       | 3.25 lbs.              |
| Triple        |                        |
| Size (HxWxD): | 2.5 x 17.0 x 6.0 In.   |
| Weight:       | 11 lbs.                |

This device is of an application specific design. Please contact LINEMASTER® for additional information: 1-860-974-1000.

| AGENCY APPROVALS | EN 60529 Degree of Protection | CATALOG NUMBER  | DESCRIPTION            | CIRUIT         | FORM | ELECTRICAL RATINGS |
|------------------|-------------------------------|-----------------|------------------------|----------------|------|--------------------|
|                  | IP20                          | SL1-S           | Single Pedal/Momentary | SPDT           | C    | 10A 125-250 VAC    |
|                  |                               | SL2-S           |                        | SPDT - 2 Stage |      |                    |
|                  |                               | SL4-S           |                        | DPDT           |      |                    |
|                  | IP68                          | SL1-SWBNO210*   | Single Pedal/Momentary | SPDT           | C    | 5A 125-250 VAC     |
|                  |                               | SL2-SWBNO410**  |                        | SPDT - 2 Stage |      |                    |
|                  |                               | SL4-SWANO410**  | Single Pedal/Momentary | DPDT           | C    | 3A 125-250 VAC     |
|                  |                               | SL4-SWBNO310*** | Single Pedal/Momentary | DPDT           | C    | 5A 125-250 VAC     |
|                  |                               | SL4-SWBNO410**  |                        | DPDT           |      |                    |

\* Supplied with 10 ft., 2 conductor, 18 awg cord; \*\* Supplied with 10 ft., 4 conductor, 18 awg cord; \*\*\* Supplied with 10 ft., 3 conductor, 18 awg cord

LINEMASTER Switch Corporation  
Tel (860) 974-1000

29 Plaine Hill Road, P.O. Box 238  
Fax (860) 974-0691

Woodstock, Connecticut 06281-0238 USA  
Fax (800) 974-FOOT(3668) Toll Free US Only

[www.linemaster.com/ds/slimline](http://www.linemaster.com/ds/slimline)