

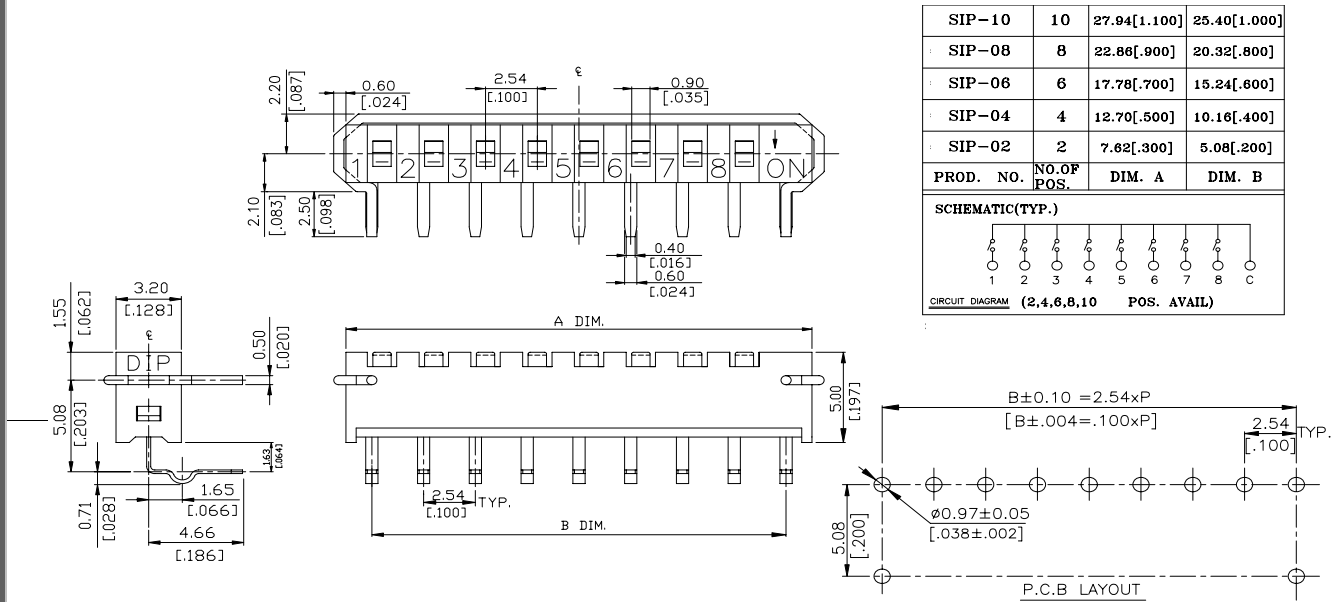


SIP SERIES



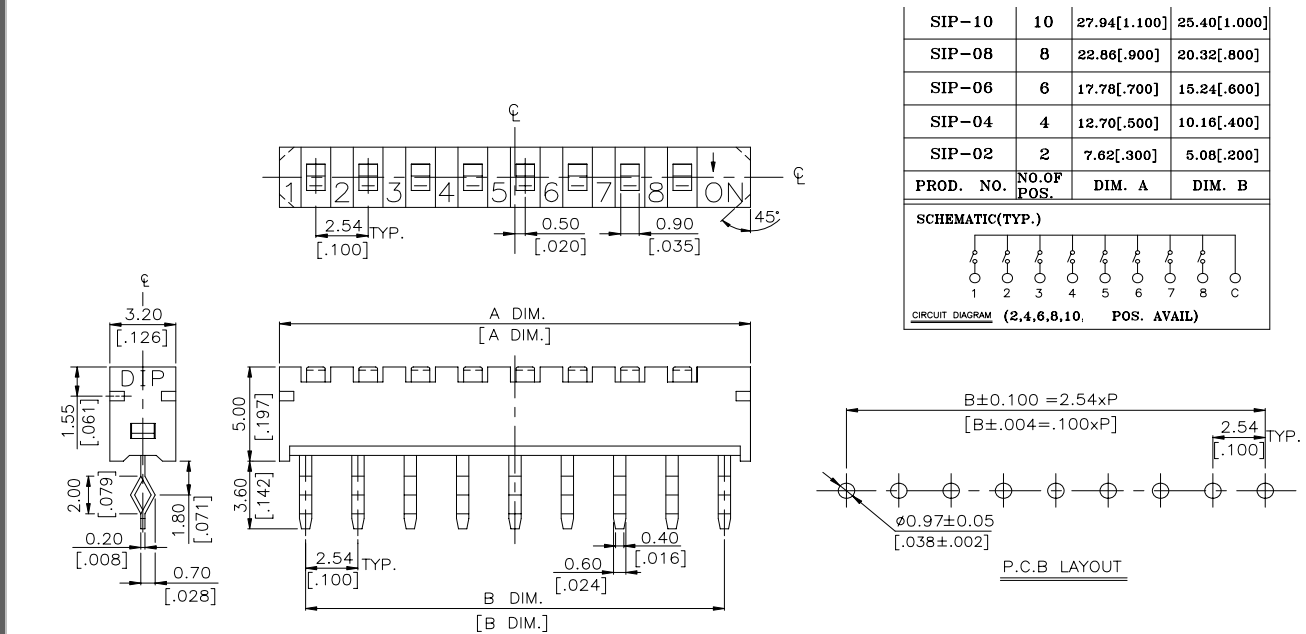
DIMENSIONS

SIP-A



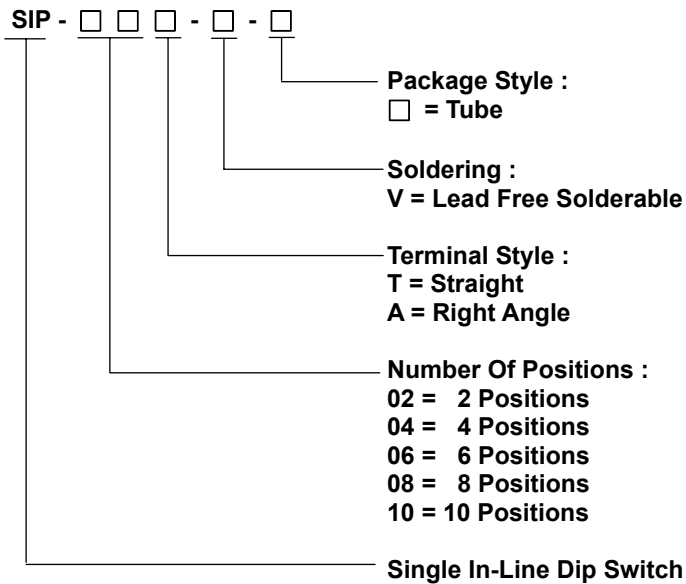
General Tolerance : $\pm 0.2\text{mm}$

SIP-T



General Tolerance : $\pm 0.2\text{mm}$

HOW TO ORDER



SPECIFICATION

△MECHANICAL

Mechanical Life: 500 cycles
Operation Force: 800gf
Operation Temperature: -30°C to +80°C
Storage Temperature: -30°C to +80°C

Electrical Life: 500 cycles
Non-Switching Rating: 100mA, 50VDC
Switching Rating: 10mA, 5VDC
Contact Resistance: (at current 100mA).
(a) 100mΩ max. at initial
(b) 200mΩ max. after life test
Insulation Resistance: 100MΩ min. 500VDC
Dielectric Strength: 300VAC / 1 minute
Circuit: SPST

MATERIAL

△COVER: UL 94V-0 Nylon High-Temp Thermoplastic
Color: Black
△BASE: UL 94V-0 PBT or Nylon High-Temp
Thermoplastic, Color: Black
△ACTUATOR: UL94V-0 Nylon Thermoplastic
Color: White
△CONTACT: Alloy Copper with gold plated.
△TERMINAL: Brass C2680-H With Tin Plated.

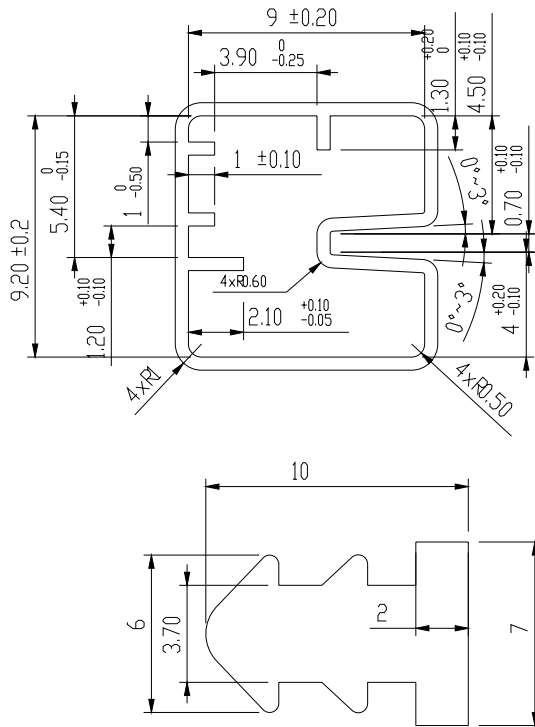
SOLDERING PROCESS

△WAVE SOLDERING: Recommended solder temperature at 500°F(260°C)max. 5 seconds.
△HAND SOLDERING: Use a soldering iron of 30 watts , controlled at 350°C approximately max 5 seconds while applying solder.

PACKING

Part Number	No. Of Positions	Number Per Tube
SIP-10A	10	16
SIP-08A	8	20
SIP-06A	6	25
SIP-04A	4	35
SIP-02A	2	56
SIP-10T	10	17
SIP-08T	8	20
SIP-06T	6	27
SIP-04T	4	37
SIP-02T	2	62

TUBE



General Tolerance : $\pm 0.2\text{mm}$