

4

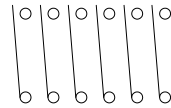
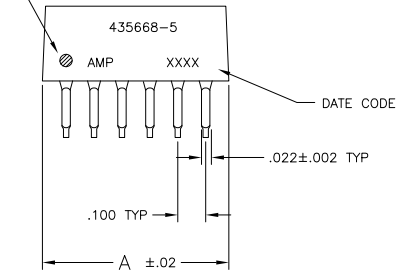
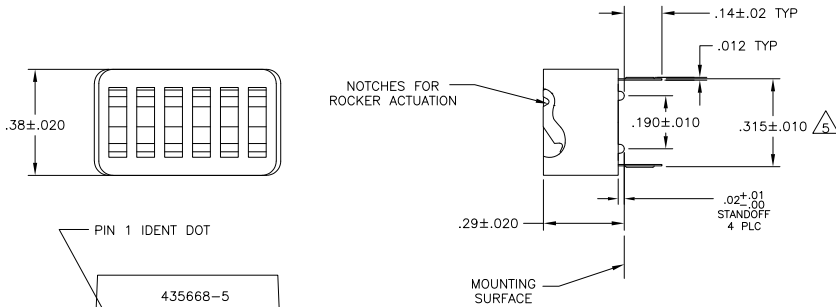
3

2

1

THIS DRAWING IS UNPUBLISHED. RELEASED FOR PUBLICATION. ALL RIGHTS RESERVED.

LOC	DIST	REVISIONS		
P	LTR	DESCRIPTION	DATE	BY
AD	00			
	A2	REVISED PER ECO-11-004917	11MAR11	RK HMR



CONTACT ARRANGEMENT

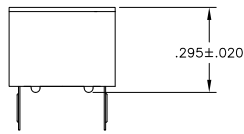
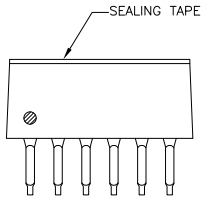


FIG 1

- FOR ADDITIONAL SPECIFICATIONS SEE AMP PRODUCT SPEC 108-7532.
- SWITCH SHOWN IN OPEN POSITION.
- ALL CHARACTERS AND ROCKERS ARE WHITE, HOUSING IS BLUE.
- STAMPING WILL VARY ON 2 AND 3 POSITION SIDES DUE TO SPACE RESTRICTIONS.
- .315 DIMENSION APPLIES AT TERMINAL TIPS. TERMINALS ARE .300 +.010 AT MOUNTING SURFACE. -.000
- ALL MATERIALS AND FINISHES SHALL COMPLY WITH EU DIRECTIVE 2002 /95/EC OF 27JAN2003 (ROHS).
- MATERIAL: HOUSING AND ROCKERS - POLYESTER CONTACT & SOLDER LEAD - COPPER ALLOY
- FINISH: CONTACT - GOLD OVER NICKEL SOLDER LEAD - TIN OVER NICKEL
- OBsolete PARTS: OBSOLETE CIS STREAMLINING PER D.RENAUD/D.SINISI

MARKING	SEALING TAPE	A	NO OF POSN	PART NO
OBsolete	FIG 7	.58	5	8-5435668-7
		.58	5	3-5435668-5
		.48	4	3-5435668-4
		.38	3	3-5435668-3
OBsolete	FIG 1	1.28	12	3-5435668-2
OBsolete		1.18	11	3-5435668-1
		1.08	10	3-5435668-0
OBsolete	FIG 2	.98	9	2-5435668-9
		.88	8	2-5435668-8
		.78	7	2-5435668-7
		.28	2	2-5435668-6
		.68	6	2-5435668-5
		1.08	10	5435668-9
		.88	8	5435668-7
		.68	6	5435668-5
		.58	5	5435668-4
		.48	4	5435668-3
OBsolete		.28	2	5435668-1

THIS DRAWING IS A CONTROLLED DOCUMENT. DIM. CHANGES: ISSY, OK, APVD, NAME, PRODUCT SPEC, APPLICATION SPEC, WEIGHT, CUSTOMER DRAWING.

TE Connectivity  
SWITCH ASSY, DIP, TYPE C, 7100 SERIES, SPST, LOW PROFILE

SIZE: A2, CASE CODE: 00779, DRAWING NO: C=5435668, RESTRICTED TO: -

SCALE: 4:1, SHEET: 1 of 2, REV: A2

4

3

2

1

THIS DRAWING IS UNPUBLISHED. RELEASED FOR PUBLICATION  
 © COPYRIGHT - By - ALL RIGHTS RESERVED.

LOC	DIST	REVISIONS			
P	LTR	DESCRIPTION	DATE	OWN	APPD
AD	00	SEE SHEET 1	-	-	-

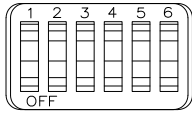


FIG 2

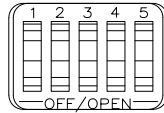


FIG 7

THIS DRAWING IS A CONTROLLED DOCUMENT.		DRN	06/06/05		TE Connectivity		
DIMENSIONS:		ISSY	-				
INCHES		OK	-	SWITCH ASSY, DIP, TYPE C, 7100 SERIES, SPST, LOW PROFILE			
OTHER DIMENSIONS:		APVD	-				
OTHER DIMENSIONS:		NAME	-				
OTHER DIMENSIONS:		PRODUCT SPEC	-				
OTHER DIMENSIONS:		APPLICATION SPEC	-	SIZE	CAGE CODE	DRAWING NO.	RESTRICTED TO
MATERIAL		WEIGHT	-	A2	00779	C=5435668	-
FINISH		CUSTOMER DRAWING	-	SCALE	4:1	SHEET	2 of 2
REV		A2	-				

1471-9 (3/11)

5435668