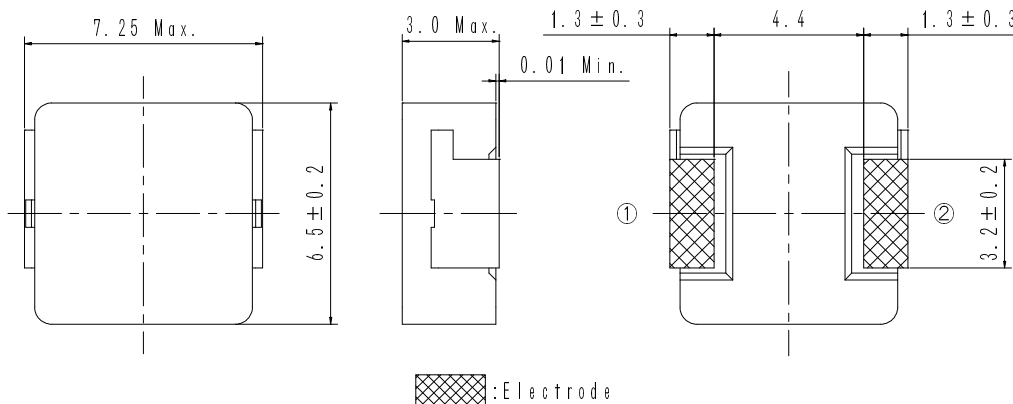
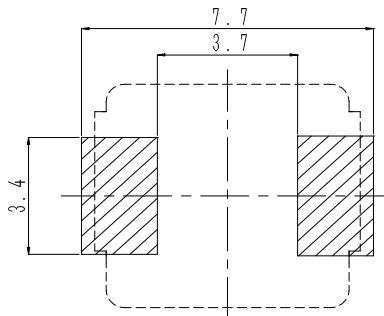
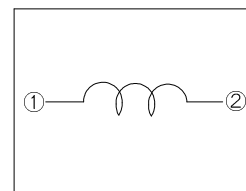


Type: CDMC6D28
◆ Product Description

- 7.25×6.70mm Max. (L×W), 3.0mm Max. Height.
- Inductance range: 0.2~4.7 μ H.
- Rated current range: 3.7~17.4A .
- In addition to the standard versions of inductors shown here, custom inductors are available to meet your exact requirements.


◆ Feature

- Magnetically shielded construction.
- Metal powder molded type, super high current inductors.
- High current inductor for Server, Notebook PC ,CPU etc as DC-DC Converter inductors.
- RoHS compliance and Halogen free.

◆ Dimensions (mm)

◆ Land Pattern (mm)

◆ Schematics (Bottom)


Type: CDMC6D28
◆ Specification

Part Name ※	Stamp	Inductance (μ H) at 1MHz	D.C.R.(m Ω) Max.(Typ.) (at 20°C)	Saturation Current (at 20°C) (A) ※1	Temperature Rise Current (A) ※2
CDMC6D28NP-R20M□	R20	0.20 \pm 20%	2.5 (2.1)	21.7 (27.2)	17.4 (19.8)
CDMC6D28NP-R30M□	R30	0.30 \pm 20%	3.2 (2.7)	15.4 (19.3)	16.1 (18.2)
CDMC6D28NP-R47M□	R47	0.47 \pm 20%	4.2 (3.5)	13.6 (17.0)	14.0 (15.9)
CDMC6D28NP-R68M□	R68	0.68 \pm 20%	5.4 (4.5)	11.3 (14.2)	12.1 (13.7)
CDMC6D28NP-1R0M□	1R0	1.0 \pm 20%	8.8 (7.3)	8.8 (11.0)	9.5 (10.8)
CDMC6D28NP-1R5M□	1R5	1.5 \pm 20%	12.5 (10.4)	7.3 (9.2)	7.6 (8.6)
CDMC6D28NP-2R2M□	2R2	2.2 \pm 20%	19.3 (16.1)	6.0 (7.6)	6.0 (6.8)
CDMC6D28NP-3R3M□	3R3	3.3 \pm 20%	30.6 (25.5)	5.0 (6.3)	4.9 (5.5)
CDMC6D28NP-4R7M□	4R7	4.7 \pm 20%	46.4 (38.7)	4.3 (5.4)	3.7 (4.2)

※ Description of part name

CDMC6D28NP-R20M□
 □ — B Box
 □ — C Carrier Tape

※1. Saturation current: The DC current at which the inductance decreases to 80% of its nominal value.

※2. The temperature rise current: The DC current at which the temperature rise is $\Delta T=40^{\circ}\text{C}$ ($T_a=20^{\circ}\text{C}$).