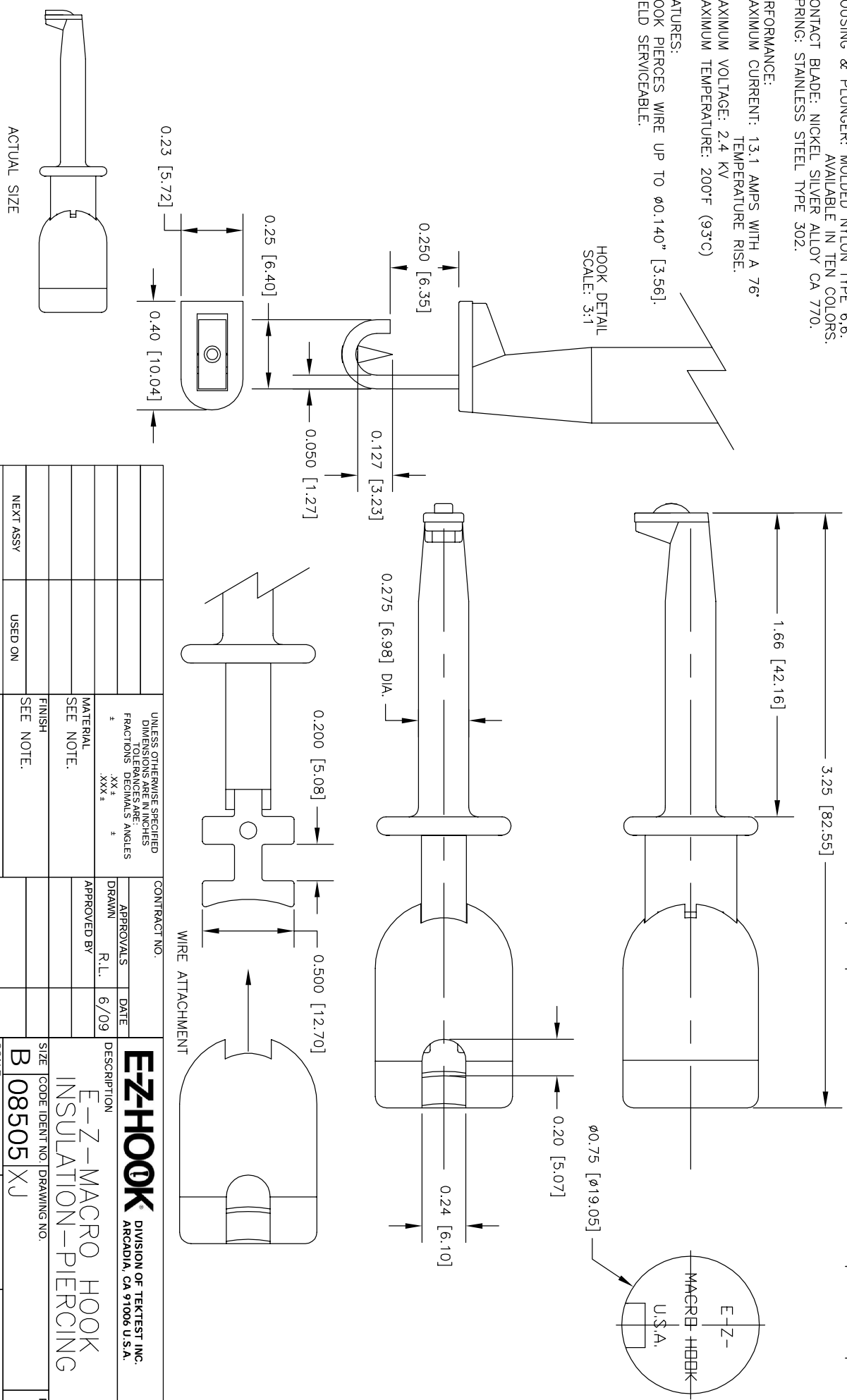


NOTES: UNLESS OTHERWISE SPECIFIED

- CONSTRUCTION: HOUSING & PLUNGER: MOLDED NYLON TYPE 6.6. AVAILABLE IN TEN COLORS. CONTACT BLADE: NICKEL SILVER ALLOY CA 770. SPRING: STAINLESS STEEL TYPE 302.

- PERFORMANCE: MAXIMUM CURRENT: 13.1 AMPS WITH A 76° TEMPERATURE RISE. MAXIMUM VOLTAGE: 2.4 KV. MAXIMUM TEMPERATURE: 200°F (93°C)

- FEATURES: HOOK PIERCES WIRE UP TO  $\phi 0.140"$  [3.56]. FIELD SERVICEABLE.



REVISIONS		DATE	APPROVED
LTR			

UNLESS OTHERWISE SPECIFIED DIMENSIONS ARE IN INCHES FRACTIONS DECIMALS ANGLES .XXX ±		CONTRACT NO.	
MATERIAL SEE NOTE.		APPROVALS	DATE
FINISH SEE NOTE.		R.L.	6/09
NEXT ASSY USED ON		APPROVED BY	
APPLICATION		DO NOT SCALE DRAWING	
DESCRIPTION		E-Z-HOOK® DIVISION OF TEKTEST INC. ARCADIA, CA 91006 U.S.A.	
SIZE CODE IDENT NO. DRAWING NO.		E-Z-MACRO HOOK INSULATION-PIERCING	
SCALE		2:1	
SHEET 1 OF 1			

THE INFORMATION CONTAINED IN THIS DOCUMENT IS PROPRIETARY TO E-Z-HOOK. THE INFORMATION IS NOT TO BE REPRODUCED WITHOUT PERMISSION OF E-Z-HOOK, DIV. OF TEKTEST INC. MAXIMUM TESTED RATING IN HANDS-FREE CONTROLLED ENVIRONMENT. MAXIMUM TESTED RATING IN HANDS-ON ENVIRONMENT.