

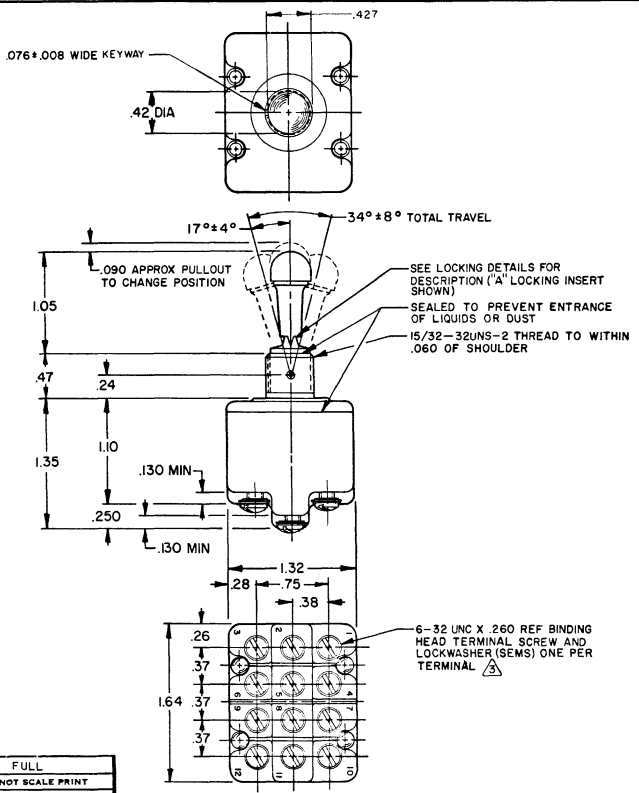
DRAWING NUMBER: **M 4TL5 SERIES CHART 2**  
 ISSUE: **9**  
 CHECK: **SH**  
 REVISIONS:  
 A CO-8850  
 J A K 19 JUN 95  
 B 200 24244  
 C 23 NOV 99  
 SCALE: **FULL**  
 DO NOT SCALE PRINT  
 UNLESS OTHERWISE NOTED  
 DIMENSIONS ARE IN INCHES  
**TOLERANCES ARE:**  
 ONE PLACE (.0) .030  
 TWO PLACE (.00) .018  
 THREE PLACE (.000) .008  
 ANGLES .008  
 WEIGHT:

**MICRO SWITCH**  
 FREEPORT, ILLINOIS, U.S.A.  
 A DIVISION OF HONEYWELL  
 FED. MFG. CODE 91929

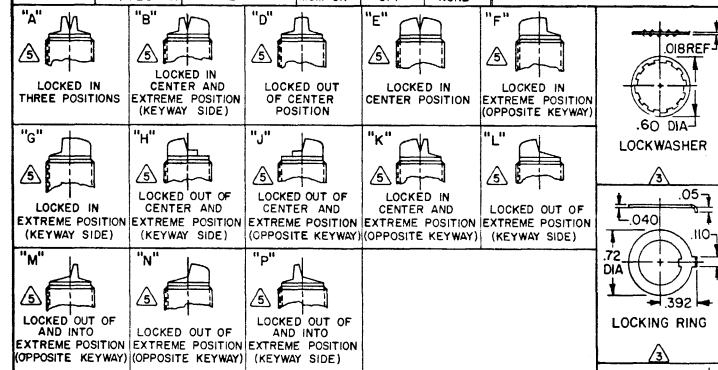
**SWITCH-TOGGLE**

CATALOG LISTING  
**4TL5 SERIES**  
**CHART 2**

THIS DRAWING COVERS A PROPRIETARY ITEM AND IS THE PROPERTY OF MICRO SWITCH, A DIVISION OF HONEYWELL. THIS DRAWING IS NOT TO BE COPIED OR USED WITHOUT THE APPROVAL OF MICRO SWITCH.



CATALOG LISTING	AVAILABLE LOCKING COMBINATIONS FOR CONFIGURATION SEE LETTERED DETAILS	CIRCUIT MADE WITH TOGGLE LEVER IN			ELECTRICAL DATA
		KEYWAY SIDE (1-2, 4-5 7-8 (0-1))	CENTER (1-2, 4-5 7-8 (0-1))	OPPOSITE KEYWAY (2-3, 5-6 8-9 (1-2))	
4TL5-1	A,B,D,E,F,G,H,J,K,L,M,N,P	ON	OFF	ON	L191 15A 125, 250, 277 VAC 1/2HP 125 VAC 1HP 250, 277 VAC 5A 125 VAC "L"
4TL5-2	D,F,G	OFF	NONE	ON	
4TL5-3	D,F,G	ON	NONE	ON	
4TL5-21	E,F,K,M	NONE	OFF	ON	
4TL5-31	E,F,K,M	NONE	ON	ON	
4TL5-4	F	MOM OFF	NONE	ON	
4TL5-5	E,F,K,L,M,N	MOM ON	OFF	ON	L192 10A 125, 250, 277 VAC 1/4HP 125 VAC 1/2HP 250, 277 VAC 3A 125 VAC "L"
4TL5-6	F	MOM ON	NONE	OFF	
4TL5-7	E,L,N	MOM ON	OFF	MOM ON	
4TL5-8	F	MOM ON	NONE	ON	
4TL5-51	E	NONE	ON	MOM ON	
4TL5-61	E	MOM ON	OFF	NONE	



**NOTES**  
 1 - SWITCHES ARE CAPABLE OF WITHSTANDING A TEMPERATURE OF 160°F CONTINUOUSLY AT FULL RATED LOAD  
 2 - CIRCUIT DESIGNATION AND MICRO SWITCH CATALOG LISTING MARKED ON SIDE OF SWITCH  
 3 - FURNISHED UNASSEMBLED  
 4 - FOR TERMINAL COVER SEE MICRO SWITCH CATALOG LISTING 5PA9  
 5 - KEYWAY SHOWN ON LEFT SIDE  
 6 - SUFFIX LETTER MUST BE ADDED FOR DESIRED TYPE OF TOGGLE LOCKING. SEE CHART FOR AVAILABLE LOCKING COMBINATIONS  
 7 - APPLIES ONLY TO "ON" AND "MOMENTARY ON" POSITIONS  
 8 - BRIGHT FINISH TOGGLE LEVER AND MOUNTING NUTS