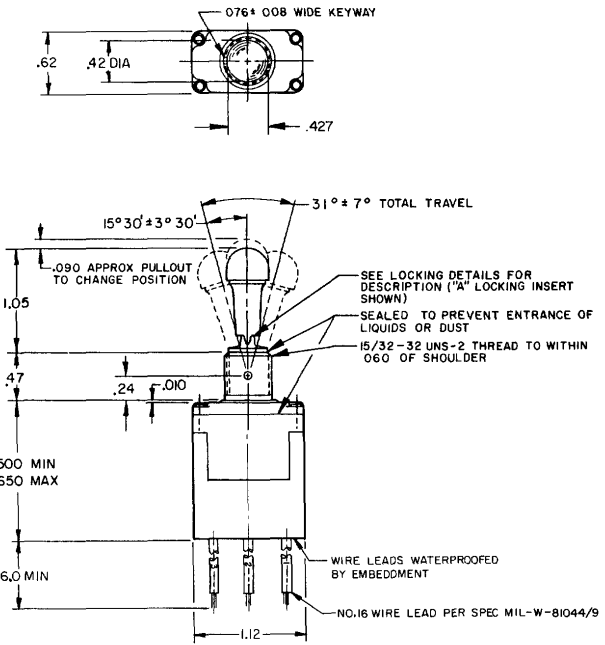


CATALOG LISTING
1TL343 SERIES CHART 2
 PAGE 1 OF 1
 RELEASE NO CO-35421SR1 (R)PLACES
 ISSUE **M**
 8
 CHECK
 REVISIONS
 A 2077942 JAF 28 JUN 84
 B 28250 JAF 10 NOV 89
 CHECK
 FORMTEK
 DRAWN
 JAF 28 JUN 94 CHECK

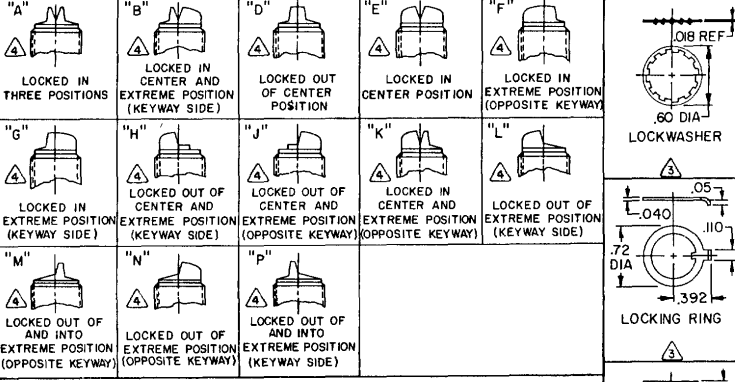
MICRO SWITCH
 FREEPORT ILLINOIS U.S.A.
 A DIVISION OF HONEYWELL
 FED. MFG. CODE #1928

CATALOG LISTING
1TL343 SERIES
SWITCH-TOGGLE
CHART 2

THIS DRAWING COVERS A PROPRIETARY ITEM AND IS THE PROPERTY OF MICRO SWITCH, A DIVISION OF HONEYWELL. THIS DRAWING IS NOT TO BE COPIED OR USED WITHOUT THE APPROVAL OF MICRO SWITCH.



CATALOG LISTING	AVAILABLE LOCKING COMBINATIONS FOR CONFIGURATION SEE LETTERED DETAILS	CIRCUIT MADE WITH TOGGLE LEVER IN			CURRENT CAPACITY (AMPS)								
		KEYWAY SIDE (1-2)	CENTER (1-2)	OPPOSITE KEYWAY (2-3)	RESISTIVE LOAD DC VOLTS		AC VOLTS		LAMP LOAD VDC		INDUCTIVE LOAD VDC		
1TL343-1	ABDEF,FGH,JKL,MNP	ON	OFF	ON	20	75	5	15	6	5	3	15	10
1TL343-2	D,F,G	OFF	NONE	ON									
1TL343-3	D,F,G	ON	NONE	ON									
1TL343-21	E,F,K,M	NONE	OFF	ON									
1TL343-31	E,F,K,M	NONE	ON	ON	(REFER TO L191 FOR UL RATING)								
1TL343-4	F	MOM ON	NONE	ON	15	75	.5	15	6	4	2	10	7
1TL343-5	E,F,K,L,M,N	MOM ON	OFF	ON									
1TL343-6	F	MOM ON	NONE	OFF									
1TL343-7	E,L,N	MOM ON	OFF	MOM ON									
1TL343-8	F	MOM ON	NONE	ON	(REFER TO L192 FOR UL RATING)								
1TL343-51	E	NONE	ON	MOM ON									
1TL343-61	E	MOM ON	OFF	NONE									



NOTES
 1 - SWITCHES ARE CAPABLE OF WITHSTANDING A TEMPERATURE OF 160°F CONTINUOUSLY AT FULL RATED LOAD
 2 - CIRCUIT DESIGNATION AND MICRO SWITCH CATALOG LISTING MARKED ON SIDE OF SWITCH
 3 - FURNISHED UNASSEMBLED
 4 - KEYWAY SHOWN ON LEFT SIDE
 5 - SUFFIX LETTER MUST BE ADDED FOR DESIRED TYPE OF TOGGLE LOCKING. SEE CHART FOR AVAILABLE LOCKING COMBINATIONS
 6 - APPLIES ONLY TO "ON" AND "MOMENTARY ON" POSITIONS
 7 - LEADWIRES ARE MARKED WITH BLACK INK EACH 3.0 MAX: "1", "2", "3"

THIRD ANGLE PROJECTION
 SCALE FULL
 DO NOT SCALE PRINT
 TOLERANCES
 APPLY TO DIMENSIONS UNLESS OTHERWISE SPECIFIED
 DIM TOL DIM TOL DIM TOL
 .005 .005 .005
 .010 .010 .010
 .015 .015 .015
 .020 .020 .020
 .030 .030 .030
 .040 .040 .040
 .050 .050 .050
 .060 .060 .060
 .070 .070 .070
 .080 .080 .080
 .090 .090 .090
 .100 .100 .100
 .125 .125 .125
 .150 .150 .150
 .175 .175 .175
 .200 .200 .200
 .250 .250 .250
 .300 .300 .300
 .375 .375 .375
 .450 .450 .450
 .500 .500 .500
 .625 .625 .625
 .750 .750 .750
 .875 .875 .875
 1.000 1.000 1.000
 1.250 1.250 1.250
 1.500 1.500 1.500
 1.750 1.750 1.750
 2.000 2.000 2.000
 2.500 2.500 2.500
 3.000 3.000 3.000
 3.500 3.500 3.500
 4.000 4.000 4.000
 4.500 4.500 4.500
 5.000 5.000 5.000
 6.000 6.000 6.000
 7.000 7.000 7.000
 8.000 8.000 8.000
 9.000 9.000 9.000
 10.000 10.000 10.000
 12.500 12.500 12.500
 15.000 15.000 15.000
 17.500 17.500 17.500
 20.000 20.000 20.000
 25.000 25.000 25.000
 30.000 30.000 30.000
 35.000 35.000 35.000
 40.000 40.000 40.000
 45.000 45.000 45.000
 50.000 50.000 50.000
 60.000 60.000 60.000
 70.000 70.000 70.000
 80.000 80.000 80.000
 90.000 90.000 90.000
 100.000 100.000 100.000
 125.000 125.000 125.000
 150.000 150.000 150.000
 175.000 175.000 175.000
 200.000 200.000 200.000
 250.000 250.000 250.000
 300.000 300.000 300.000
 350.000 350.000 350.000
 400.000 400.000 400.000
 450.000 450.000 450.000
 500.000 500.000 500.000
 600.000 600.000 600.000
 700.000 700.000 700.000
 800.000 800.000 800.000
 900.000 900.000 900.000
 1000.000 1000.000 1000.000
 DESIGN UNITS METRIC UNUSUAL
 MATERIALS - COMMERCIAL STANDARDS
 MICRO SWITCH STANDARDS APPLY
 DISCREPANCIES TO BE MET BY BUYER
 PROTECTIVE COATINGS ARE APPLIED
 WEIGHT .10 LBS APPROX

L191	15A 125, 250, 277 VAC 1/2HP 125 VAC 1/4HP 250, 277 VAC 5A 125 VAC "L"	CE	RUL
L192	10A 125, 250, 277 VAC 1/4HP 125 VAC, 1/2HP 250, 277 VAC 3A 125 VAC "L"	CE	RUL