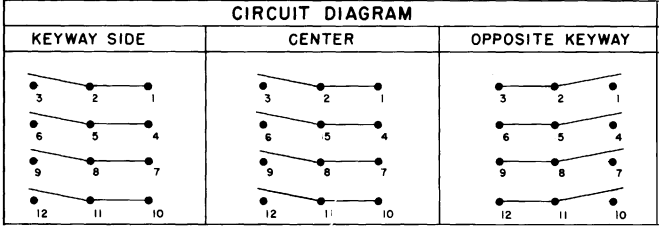
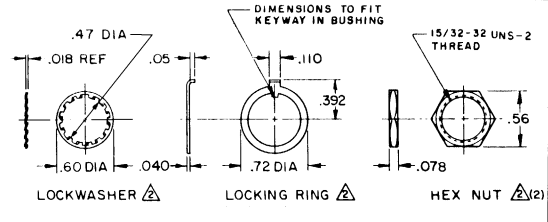
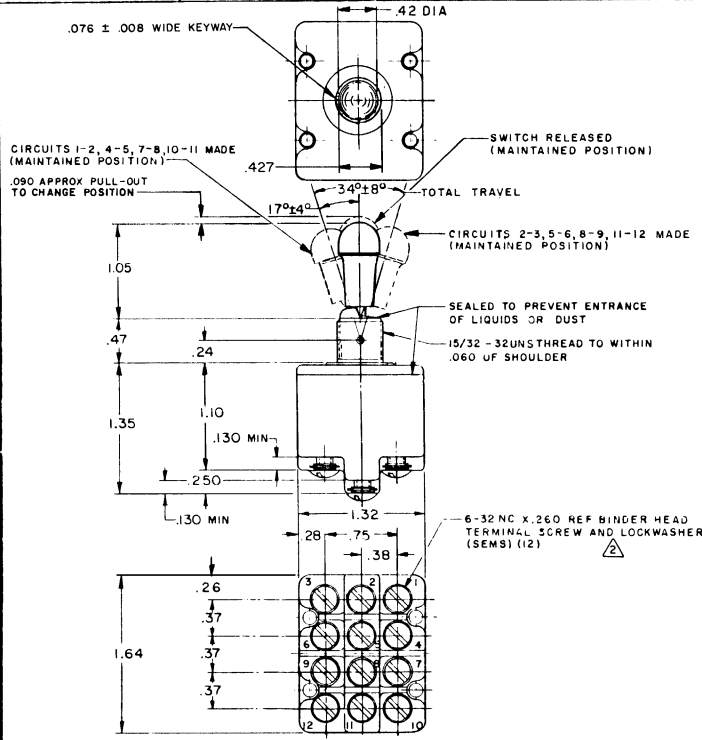


MICRO SWITCH
 FEDERAL MILITARY CODE 91929

SWITCH-TOGGLE

CATALOG LISTING
4TL66-1L

DRAWING NUMBER
4 TL66-1L
 PAGE 1 OF 1
 REVISIONS
 A CO-BI5D
 B 10/28/52
 C 10/28/52
 D 10/28/52
 E 10/28/52
 F 10/28/52
 G 10/28/52
 H 10/28/52
 I 10/28/52
 J 10/28/52
 K 10/28/52
 L 10/28/52
 M 10/28/52
 N 10/28/52
 O 10/28/52
 P 10/28/52
 Q 10/28/52
 R 10/28/52
 S 10/28/52
 T 10/28/52
 U 10/28/52
 V 10/28/52
 W 10/28/52
 X 10/28/52
 Y 10/28/52
 Z 10/28/52
 AA 10/28/52
 AB 10/28/52
 AC 10/28/52
 AD 10/28/52
 AE 10/28/52
 AF 10/28/52
 AG 10/28/52
 AH 10/28/52
 AI 10/28/52
 AJ 10/28/52
 AK 10/28/52
 AL 10/28/52
 AM 10/28/52
 AN 10/28/52
 AO 10/28/52
 AP 10/28/52
 AQ 10/28/52
 AR 10/28/52
 AS 10/28/52
 AT 10/28/52
 AU 10/28/52
 AV 10/28/52
 AW 10/28/52
 AX 10/28/52
 AY 10/28/52
 AZ 10/28/52
 BA 10/28/52
 BB 10/28/52
 BC 10/28/52
 BD 10/28/52
 BE 10/28/52
 BF 10/28/52
 BG 10/28/52
 BH 10/28/52
 BI 10/28/52
 BJ 10/28/52
 BK 10/28/52
 BL 10/28/52
 BM 10/28/52
 BN 10/28/52
 BO 10/28/52
 BP 10/28/52
 BQ 10/28/52
 BR 10/28/52
 BS 10/28/52
 BT 10/28/52
 BU 10/28/52
 BV 10/28/52
 BV 14 MAY 62
 DW 14 MAY 62
 DW 14 MAY 62



NOTES

- SWITCH IS CAPABLE OF WITHSTANDING A TEMPERATURE OF 160°F CONTINUOUSLY AT FULL RATED LOAD
- FURNISHED UNASSEMBLED
- MICRO SWITCH CATALOG LISTING AND CIRCUIT DESIGNATION MARKED ON SIDE OF SWITCH
- FOR TERMINAL COVER SEE MICRO SWITCH CAT. LIST. 5PA9

ELECTRICAL DATA		MILITARY RATING (AMPS)								SCALE -
CONTINUOUS	RESISTIVE LOAD				LAMP LOAD				INDUCTIVE LOAD	DO NOT SCALE PRINT
	DC VOLTS	AC VOLTS			28 VDC	125 VAC	28 VDC	125 VAC		
28	125	250	125	250	28 VDC	125 VAC	28 VDC	125 VAC	UNLESS OTHERWISE SPECIFIED	
20	.75	.5	15	6	5	4	12	15	TOLERANCES ARE:	
DIMENSIONS ARE IN INCHES ONE PLACE .01 2.015 TWO PLACE .001 2.012 THREE PLACE .0001 2.008 ANGLES - WEIGHT .19 LB EST										

L91 15A 125, 250, 277 VAC
 1/2HP 125 VAC
 1HP 250, 277 VAC
 5A 125 VAC "L"