

DRAWING NUMBER
4TL57 SERIES CHART 1
PAGE 1 OF 1

ISSUE
8

REVISIONS
A CO-880
J A K
18 JAN 95
B 92444
23 NOV 99

CHECK

CHECK

CHECK

CHECK

DRAWN

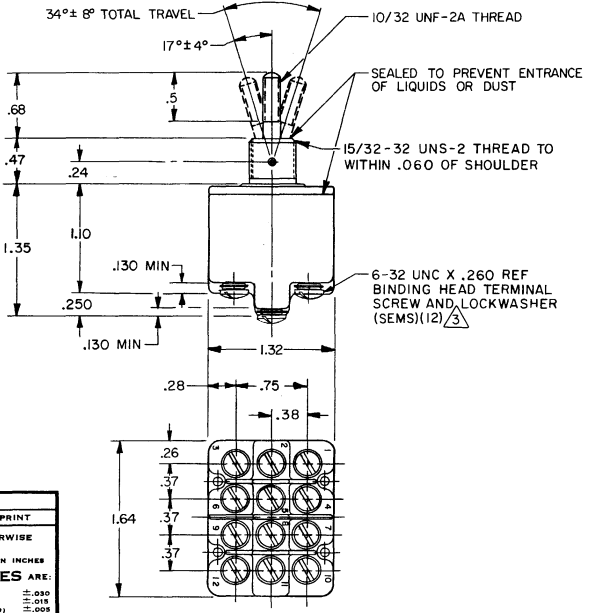
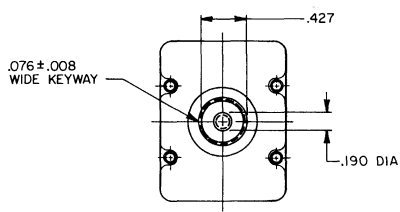
FORMTEK

MICRO SWITCH
PLEASANT HILL, ILLINOIS U.S.A.
A DIVISION OF HONEYWELL
FED. MFG. CODE #1929

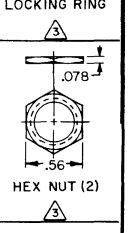
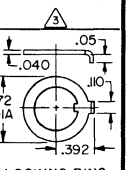
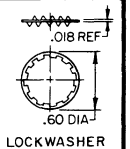
SWITCH-TOGGLE

CATALOG LISTING
4TL57 SERIES
CHART 1

THIS DRAWING COVERS A PROPRIETARY ITEM AND IS THE PROPERTY OF MICRO SWITCH, A DIVISION OF HONEYWELL. THIS DRAWING IS NOT TO BE COPIED OR USED WITHOUT THE APPROVAL OF MICRO SWITCH.



CATALOG LISTING	CIRCUIT WITH TOGGLE IN			MILITARY RATING (AMPS)							
	EXTREME POSITION KEYWAY SIDE	CENTER	EXTREME POSITION OPPOSITE KEYWAY	RESISTIVE LOAD				INDUCTIVE LOAD			
				DC VOLTS	AC VOLTS	DC VOLTS	AC VOLTS	28 VDC	125 VAC	28 VDC	125 VAC
4TL57-1	ON	OFF	ON								
4TL57-2	OFF	NONE	ON								
4TL57-3	ON	NONE	ON								
4TL57-2I	NONE	OFF	ON								
4TL57-3I	NONE	ON	ON								
4TL57-4	MOM OFF	NONE	ON								
4TL57-5	MOM ON	OFF	ON								
4TL57-6	MOM ON	NONE	OFF								
4TL57-7	MOM ON	OFF	MOM ON								
4TL57-8	MOM ON	NONE	ON								
4TL57-5I	NONE	ON	MOM ON								
4TL57-6I	MOM ON	OFF	NONE								



NOTES
 1 - SWITCHES ARE CAPABLE OF WITHSTANDING A TEMPERATURE OF 160°F CONTINUOUSLY AT FULL RATED LOAD
 2 - CIRCUIT DESIGNATION AND MICRO SWITCH CATALOG LISTING MARKED ON SIDE OF SWITCH
 3 - FURNISHED UNASSEMBLED
 4 - FOR TERMINAL COVER SEE MICRO SWITCH CAT. LIST. 5PA9

SCALE FULL
 DO NOT SCALE PRINT
 UNLESS OTHERWISE NOTED
 DIMENSIONS ARE IN INCHES
TOLERANCES ARE:
 ONE PLACE (.01) H .010
 TWO PLACE (.00) H .005
 THREE PLACE (.000) H .0005
 ANGLES H .010
 WEIGHT

L191 15A 125, 250, 277 VAC
 1/2HP 125 VAC
 1HP 250, 277 VAC
 5A 125 VAC "L"
 UL CE

L192 10A 125, 250, 277 VAC
 1/4HP 125 VAC,
 1/2HP 250, 277 VAC
 3A 125 VAC "L"
 UL CE