

**MICRO SWITCH**  
 FREEPORT, ILLINOIS, U.S.A.  
 A DIVISION OF HONEYWELL  
 FED. MFG. CODE 91928

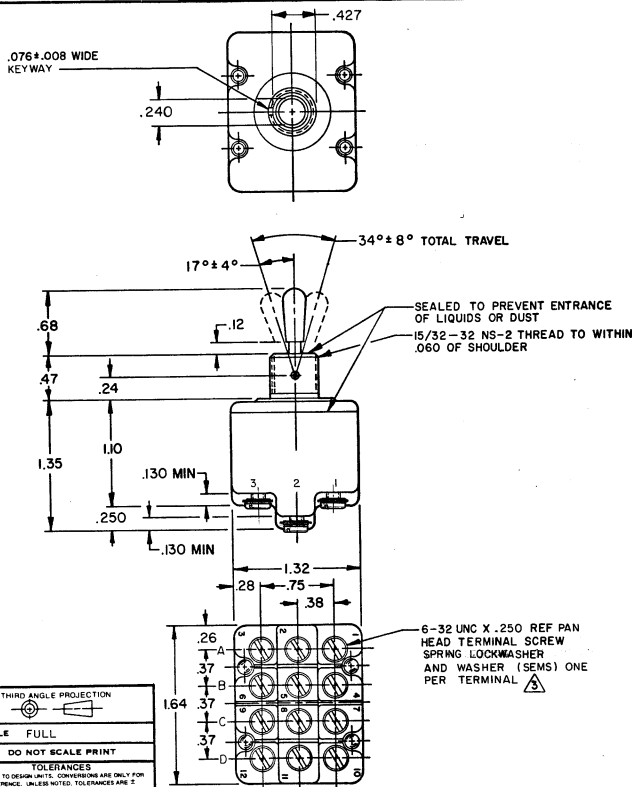
**SWITCH-TOGGLE**

CATALOG LISTING  
**4TL11 SERIES**  
**CHART 1**

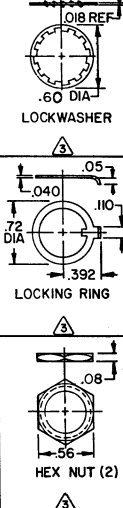
THIS DRAWING COVERS A PROPRIETARY ITEM AND IS THE PROPERTY OF MICRO SWITCH, A DIVISION OF HONEYWELL. THIS DRAWING IS NOT TO BE COPIED OR USED WITHOUT THE APPROVAL OF MICRO SWITCH.

CATALOG LISTING	CIRCUIT MADE WITH TOGGLE LEVER IN			CURRENT CAPACITY (AMPS)								
	KEYWAY SIDE (1-2, 4-5, 7-8, 10-11)	CENTER (1-2, 4-5, 7-8, 10-11)	OPPOSITE KEYWAY (2-3, 5-6, 8-9, 11-12)	RESISTIVE LOAD		LAMP LOAD		INDUCTIVE LOAD				
				DC VOLTS	AC VOLTS	28 VDC	125 VAC	28 VDC	125 VAC			
4TL11 - 1	ON	OFF	ON	20	.75	.5	15	6	5	4	12	15
4TL11 - 2	OFF	NONE	ON									
4TL11 - 3	ON	NONE	ON									
4TL11 - 21	NONE	OFF	ON	18	.75	.5	11	6	4	2	10	8
4TL11 - 31	NONE	ON	ON									
4TL11 - 4	MOM OFF	NONE	ON									
4TL11 - 5	MOM ON	OFF	ON									
4TL11 - 6	MOM ON	NONE	OFF									
4TL11 - 7	MOM ON	OFF	MOM ON									
4TL11 - 8	MOM ON	NONE	ON									
4TL11 - 51	NONE	ON	MOM ON									
4TL11 - 61	MOM ON	OFF	NONE									
4TL11 - 82	ON	NONE	MOM ON									

**4 TL11 SERIES**  
**CHART 1**  
 DRAWING NUMBER  
 ISSUE  
 REVISIONS  
 CHECK  
 DRAWN  
 RELEASER NO. PR-5377  
 REPLACE



- NOTES**
- SWITCHES ARE CAPABLE OF WITHSTANDING A TEMPERATURE OF 160°F CONTINUOUSLY AT FULL RATED LOAD
  - POLE, CIRCUIT DESIGNATION AND MICRO SWITCH CATALOG LISTING MARKED ON SIDE OF SWITCH
  - FURNISHED UNASSEMBLED
  - FOR TERMINAL COVER SEE MICRO SWITCH CATALOG LISTING SPA9
  - APPLIES ONLY TO "ON" AND "MOMENTARY ON" POSITIONS



REVISIONS

A	CO-49070	16 MAY 81	1
B	CO-49096	16 NOV 81	1
C	CO-49482	2 APR 82	1
D	CO-58436	16 JAN 88	1
E	CO-60661	28 APR 88	1
F	CO-64454	2 DEC 94	1

SCALE FULL  
 DO NOT SCALE PRINT  
 TOLERANCES  
 APPLY TO DESIGN UNITS. CONVERSIONS ARE ONLY FOR REFERENCE UNLESS NOTED. TOLERANCES ARE:  
 DIMENSIONAL: .0005  
 ANGLES: .01  
 DESIGN UNITS: US CUSTOMARY  
 RAW MATERIAL-COMMERCIAL STANDARD MICRO SWITCH STANDARDS APPLY  
 DIMENSIONS ARE TO BE MET BEFORE PROTECTIVE COATINGS ARE APPLIED  
 WEIGHT