

MICRO SWITCH

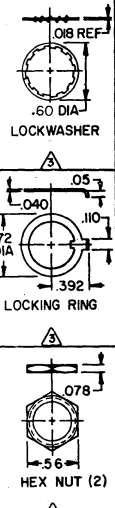
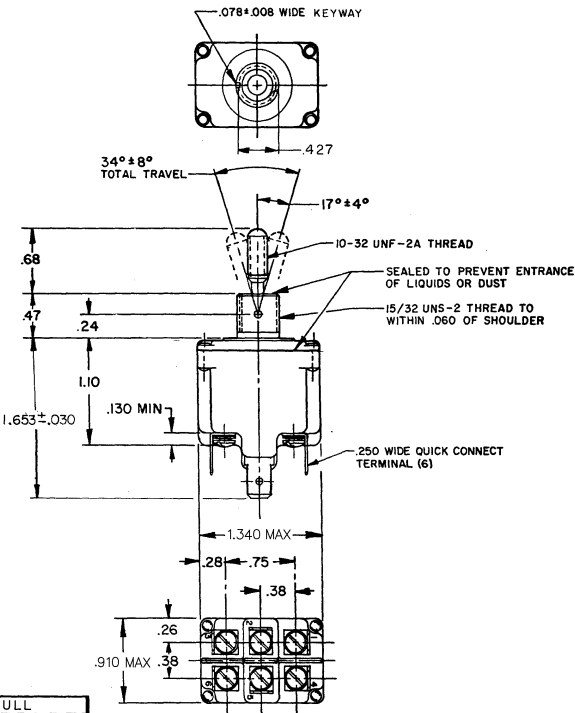
FREEPORT, ILLINOIS, U.S.A.
A DIVISION OF HONEYWELL
FED. MFG. CODE 91928

SWITCH-TOGGLE

CATALOG LISTING
2TL95 SERIES
CHART 1

THIS DRAWING COVERS A PROPRIETARY ITEM AND IS THE PROPERTY OF MICRO SWITCH, A DIVISION OF HONEYWELL. THIS DRAWING IS NOT TO BE COPIED OR USED WITHOUT THE APPROVAL OF MICRO SWITCH.

CATALOG LISTING	CIRCUIT MADE WITH TOGGLE LEVER IN			MILITARY RATING (AMPS)								
	KEYWAY SIDE (1-2,4-5)	CENTER (1-2,4-5)	OPPOSITE KEYWAY (2-3,5-6)	RESISTIVE LOAD				INDUCTIVE LOAD				
				DC VOLTS	AC VOLTS	LAMP LOAD	DC VOLTS	AC VOLTS	LAMP LOAD			
2TL95-1	ON	OFF	ON	20	.75	.5	15	6	7	4	15	15
2TL95-2	OFF	NONE	ON	(REFER TO L191 FOR UL RATING)								
2TL95-3	ON	NONE	ON									
2TL95-21	NONE	OFF	ON									
2TL95-31	NONE	ON	ON									
2TL95-4	MOM OFF	NONE	ON									
2TL95-5	MOM ON	OFF	ON									
2TL95-6	MOM ON	NONE	OFF									
2TL95-7	MOM ON	OFF	MOM ON									
2TL95-8	MOM ON	NONE	ON									
2TL95-51	NONE	ON	MOM ON									
2TL95-61	MOM ON	OFF	NONE	(REFER TO L192 FOR UL RATING)								



- NOTES**
- SWITCHES ARE CAPABLE OF WITHSTANDING A TEMPERATURE OF 160°F CONTINUOUSLY AT FULL RATED LOAD
 - CIRCUIT DESIGNATION AND MICRO SWITCH CATALOG LISTING MARKED ON SIDE OF SWITCH
 - FURNISHED UNASSEMBLED
 - FOR TERMINAL COVER SEE MICRO SWITCH CATALOG LISTING 5PA8
 - APPLIES ONLY TO "ON" AND "MOMENTARY ON" POSITIONS

SCALE FULL
DO NOT SCALE PRINT
UNLESS OTHERWISE NOTED
DIMENSIONS ARE IN INCHES
TOLERANCES ARE:

ONE PLACE (.0)	±.030
TWO PLACE (.00)	±.018
THREE PLACE (.000)	±.008
ANGLES	±.008

WEIGHT .20 LBS MAX

15A-125, 250 OR 277 VAC	UL	10A-125, 250, 277 VAC	UL
1/2HP-125VAC; 1HP-250, 277VAC	CE	1/4HP-125VAC; 1/2HP-250, 277VAC	CE
5A-125VAC "L" CODE L191	CE	3A-125VAC "L" CODE L192	CE

CATALOG LISTING 2TL95 SERIES CHART 1
 ISSUE 4
 RELEASE NO. CO-78497
 REPLACES 2TL95 SERIES
 REVISIONS:
 A 178947 24 AUG 94
 B 94240 23 NOV 99
 C 000303 06 FEB 05
 DRAWN TSM 19 JUN 94
 CHECKED KAG 7 JUL 94
 APPROVED MDJM 06 FEB 04
 FORMTEK