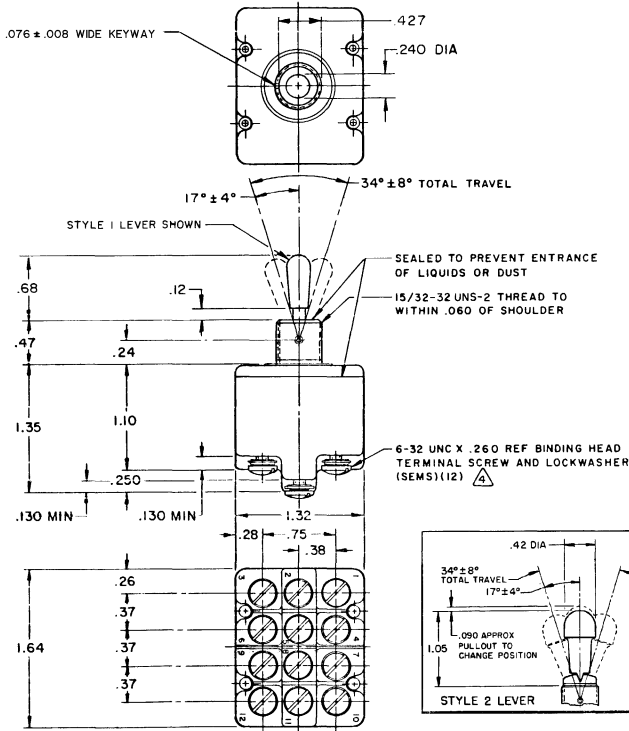


HONEYWELL  
PART NUMBER  
4TL1-70 SERIES CHART 1

REV	DOCUMENT	CHANGED BY	CHECK
9	0012521	BM 20APR05	AK



CAT. LIST	AVAILABLE LOCKING COMBINATIONS FOR CONFIGURATION "SEE LETTERS" REF: 11	STYLE NO.	MILITARY RATING (AMPS)						MS NUMBER			
			RESISTIVE LOAD DC VOLTS	LAMP LOAD 125V AC	INDUCTIVE LOAD 28 VDC	CONTINUOUS	10	8				
FAA-PMA	NONE	1	18	7.5	5	11	6	4	2	10	8	
4TL1-70	E.L.N	2										
"A"	LOCKED IN THREE POSITIONS											
"B"	LOCKED IN CENTER AND EXTREME POSITION (KEYWAY SIDE)											
"D"	LOCKED OUT OF CENTER POSITION											
"E"	LOCKED IN CENTER POSITION											
"F"	LOCKED IN EXTREME POSITION (OPPOSITE KEYWAY)											
"G"	LOCKED IN EXTREME POSITION (KEYWAY SIDE)											
"H"	LOCKED OUT OF CENTER AND EXTREME POSITION (KEYWAY SIDE)											
"J"	LOCKED OUT OF CENTER AND EXTREME POSITION (OPPOSITE KEYWAY)											
"K"	LOCKED IN CENTER POSITION (OPPOSITE KEYWAY)											
"L"	LOCKED OUT OF CENTER POSITION (KEYWAY SIDE)											
"M"	LOCKED OUT OF EXTREME POSITION (OPPOSITE KEYWAY)											
"N"	LOCKED OUT OF EXTREME POSITION (KEYWAY SIDE)											
"P"	LOCKED OUT OF AND INTO EXTREME POSITION (KEYWAY SIDE)											
			.47 DIA .018 REF		DIMENSIONS TO FIT KEYWAY IN BUSHING		.05		.110		.392	
			.60 DIA LOCKWASHER		.040		.72 DIA		.078		.56	
											15/32-32 UNS-2 THREADED HEX NUT	
LEVER ON KEYWAY SIDE			LEVER IN CENTER			LEVER OPPOSITE KEYWAY						
MOMENTARY POSITION			MAINTAINED POSITION			MOMENTARY POSITION						

10A-125, 250, 277 VAC  
 1/4HP-125VAC; 1/2HP-250, 277VAC  
 3A-125VAC "L" CODE 192

WEIGHT: .18 LB

- NOTES
- SWITCHES ARE CAPABLE OF WITHSTANDING A TEMPERATURE OF 160°F CONTINUOUSLY AT FULL RATED LOAD
  - CIRCUIT DESIGNATION AND MICRO SWITCH CATALOG LISTING MARKED ON SIDE OF SWITCH KEYWAY SHOWN ON LEFT SIDE
  - FURNISHED UNASSEMBLED
  - FOR TERMINAL COVER SEE MICRO SWITCH CATALOG LISTING SPA9
  - SUFFIX LETTER MUST BE ADDED FOR DESIRED TYPE TOGGLE LOCKING, SEE CHART FOR AVAILABLE LOCKING COMBINATIONS FAA-PMA MUST BE MARKED ON SWITCH
  - FOR MANUFACTURING DETAIL SEE THE CORRESPONDING ASSEMBLY DRAWING FOR EACH LISTING FOR FAA-PMA.

DESIGN UNITS: INCH  
TOLERANCES UNLESS NOTED:

ONE PLACE	.X	±	0.030
TWO PLACE	.XX	±	0.015
THREE PLACE	.XXX	±	0.005
ANGLES		±	

THIRD ANGLE PROJECTION

DRAWN	DAW	18 SEP 71
CHECK		
THIS DRAWING COVERS A PROPRIETARY ITEM AND IS THE PROPERTY OF HONEYWELL. THIS DRAWING IS NOT TO BE COPIED OR USED WITHOUT THE PERMISSION OF HONEYWELL.		
INTERPRET PER ASME Y14.5M-1994 OTHER HONEYWELL ENGINEERING STANDARDS MAY APPLY		
RASTER		

<b>Honeywell</b>			
TITLE			
SWITCH-TOGGLE			
SIZE	TYPE	DRAWING NAME	REV
B	I	4TL1-70 SERIES CHART 1	9
SCALE	FULL	SHEET	1 OF 1