

MICRO SWITCH
 FREEPORT, ILLINOIS, U.S.A.
 A DIVISION OF HONEYWELL
 FED. MFG. CODE 91928

SWITCH-TOGGLE

CATALOG LISTING
2TL5 SERIES
CHART 1

CATALOG LISTING	CIRCUIT MADE WITH TOGGLE LEVER IN		
	KEYWAY SIDE (1-2,4-5)	CENTER (1-2,4-5)	OPPOSITE KEYWAY (2-3,5-6)

ELECTRICAL RATING

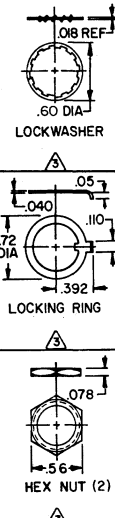
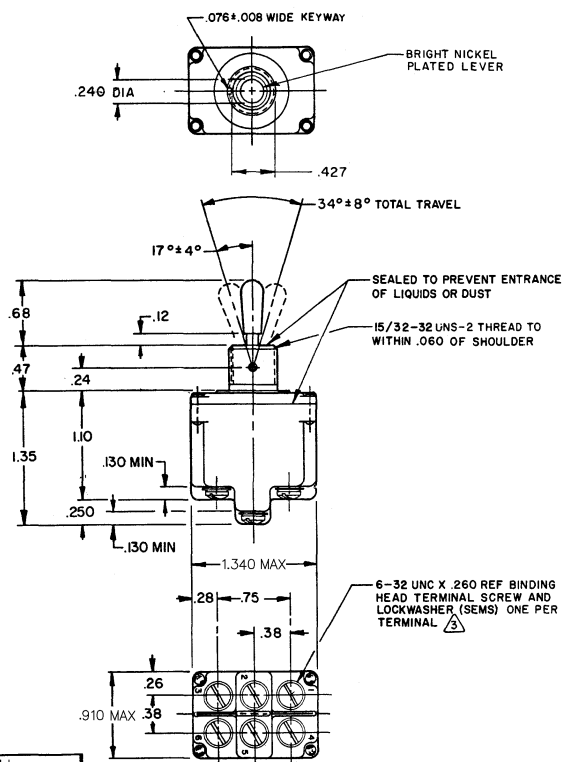
THIS DRAWING COVERS A PROPRIETARY ITEM AND IS THE PROPERTY OF MICRO SWITCH, A DIVISION OF HONEYWELL. THIS DRAWING IS NOT TO BE COPIED OR USED WITHOUT THE APPROVAL OF MICRO SWITCH.

2TL5-1	ON	OFF	ON
2TL5-2	OFF	NONE	ON
2TL5-3	ON	NONE	ON
2TL5-21	NONE	OFF	ON
2TL5-31	NONE	ON	ON
2TL5-4	MOM OFF	NONE	ON
2TL5-5	MOM ON	OFF	ON
2TL5-6	MOM ON	NONE	OFF
2TL5-7	MOM ON	OFF	MOM ON
2TL5-8	MOM ON	NONE	ON
2TL5-51	NONE	ON	MOM ON
2TL5-61	MOM ON	OFF	NONE
2TL5-81	MOM ON	ON	NONE

15A-125, 250 OR 277VAC
 1/2HP-125VAC; 1HP-250, 277VAC
 5A-125VAC "L" CODE L191

10A-125, 250 OR 277VAC
 1/4HP-125VAC; 1/2HP-250, 277VA
 3A-125VAC "L" CODE L192

2TL5 SERIES
 CHART 1
 PAGE 1 OF 1
 M
 ISSUE NO. 10
 CHECK NO. 106 FEB 04
 REVISIONS:
 A CO30421
 B PR6750
 C 45070
 D 45070
 E 45070
 F CO60809
 G 45070
 H CO94438
 J CO03010
 SCALE FULL
 DO NOT SCALE PRINT
 UNLESS OTHERWISE NOTED
 DIMENSIONS ARE IN INCHES
 TOLERANCES ARE:
 ONE PLACE (.01)
 TWO PLACE (.001)
 THREE PLACE (.0005)
 ANGLES (H) .015
 (H) .005
 WEIGHT .12 LB APPROX
 FORMTEK
 L.S.D. 27 JUN 77
 CHECK CCH 77 JUN 77
 150 06 FEB 04



- NOTES**
- SWITCHES ARE CAPABLE OF WITHSTANDING A TEMPERATURE OF 160°F CONTINUOUSLY AT FULL RATED LOAD
 - CIRCUIT DESIGNATION AND MICRO SWITCH CATALOG LISTING MARKED ON SIDE OF SWITCH
 - FURNISHED UNASSEMBLED
 - FOR TERMINAL COVER SEE MICRO SWITCH CATALOG LISTING 5PA8
 - APPLIES ONLY TO "ON" AND "MOMENTARY ON" POSITIONS
 - BRIGHT FINISH TOGGLE LEVER AND MOUNTING NUTS