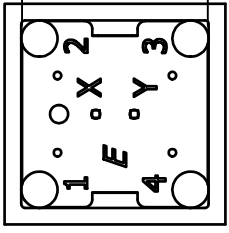
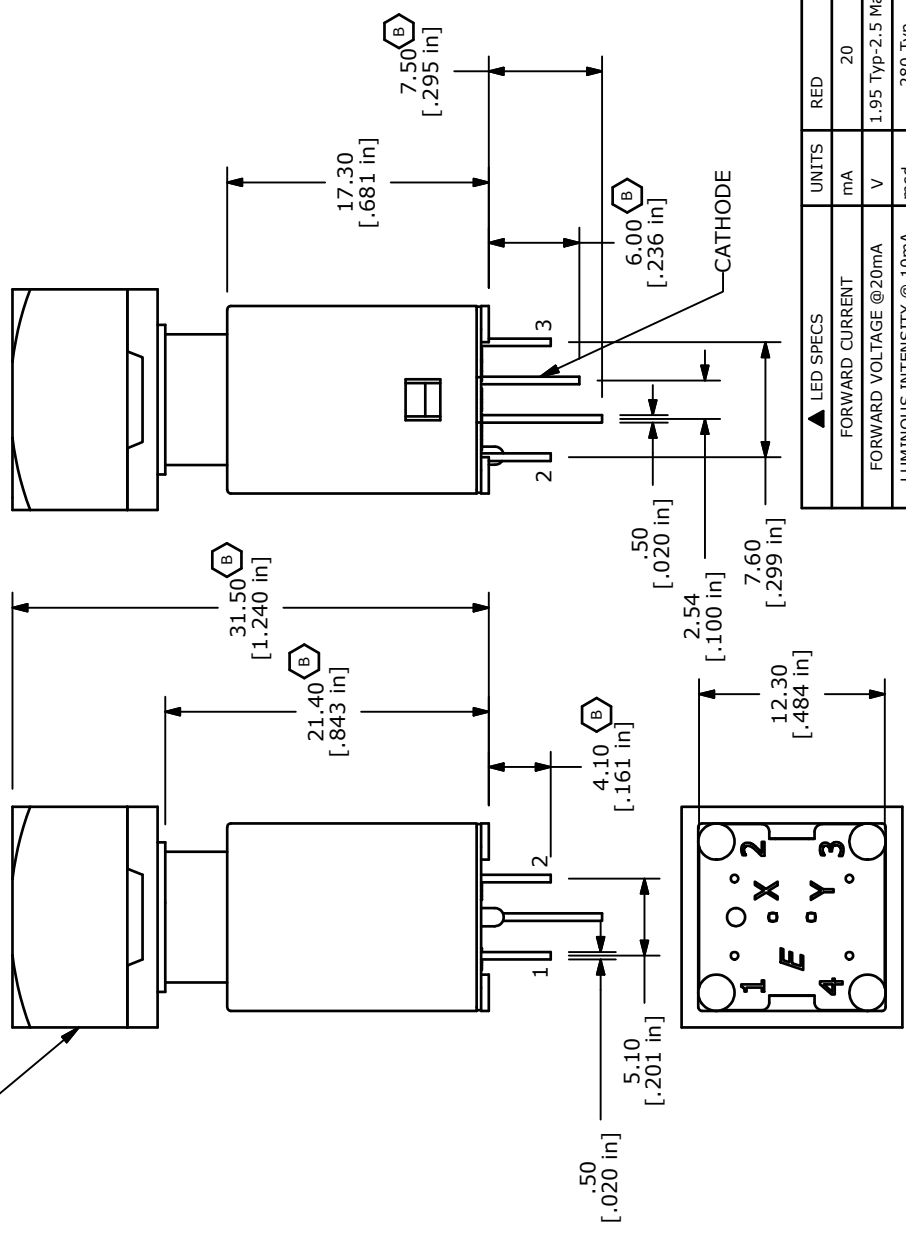
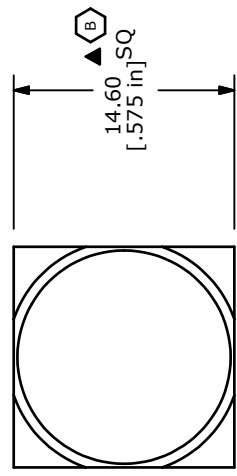


▲ CLEAR CAP WITH WHITE DIFFUSER



▲ LED SPECS	UNITS	RED
FORWARD CURRENT	mA	20
FORWARD VOLTAGE @20mA	V	1.95 Typ-2.5 Max
LUMINOUS INTENSITY @ .10mA	mcd	280 Typ

- NOTES:
1. ALL DIMENSIONS IN MM [INCH]
 2. GENERAL TOLERANCE: X.X=±0.4
X.XX=±0.25
 3. TERM. NOS. FOR REFERENCE ONLY.
 4. RATING: 20VDC, 100mA MAX; SPST
 5. CONTACT RESISTANCE: 150 MILLI-OHM MAX.
 6. INSULATION RESISTANCE: 10MEGA-OHM MIN @500VDC.
 7. DIELECTRIC STRENGTH: 500VAC FOR 1 MINUTE
 8. OPERATING FORCE: 250±x50GF
 9. OPERATING LIFE: 50,000,000 CYCLES
 10. OPERATING TEMP: -5°C TO +60°C
 11. STORAGE TEMPERATURE: -40°C TO +90°C
 12. TOTAL TRAVEL: 3.30mm±0.3
 - ▲13. TRAVEL TO ELECTRICAL MAKE: 2.9 ±0.5MM
 - ▲14. LED COLOR: RED
 15. 2002/95/EC (ROHS) COMPLIANT
 16. ▲ DENOTES CRITICAL PARAMETER.



TITLE LP160A1BSTWR

B	19592	CHANGE DIMS	1/17/11	BGL
A	19259	New Release	8/20/10	rc
REV	PCR NO	DESCRIPTION	DATE	BY

THE INFORMATION CONTAINED IN THIS DOCUMENT IS PROPRIETARY TO E-SWITCH AND IS NOT TO BE COPIED OR TRANSFERRED

SCALE	2:1	DATE	7/30/2010	DR	rc	DWG	B160004	REV	B
-------	-----	------	-----------	----	----	-----	---------	-----	---