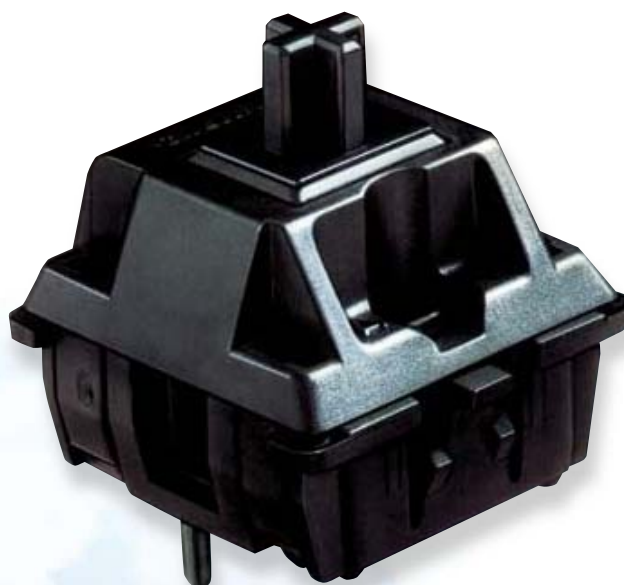


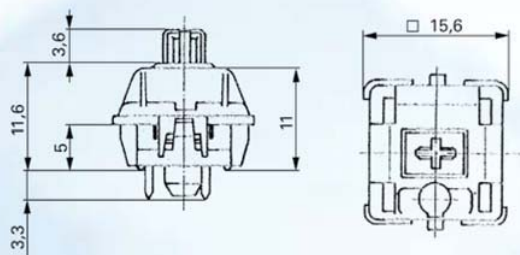
Keymodule MX



Features

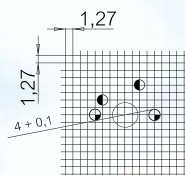
The constructive design of the key and the design of the associated keycaps fulfil the ergonomic requirements for data input workstations. Long operating life with gold crosspoint contact and high reliability with quick actuation. Optionally with integrated colour LED decoupling diode or wire bridge. 4 mm actuation travel.

View of Keymodule

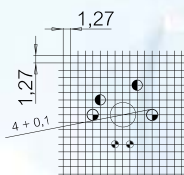


Drilling patterns

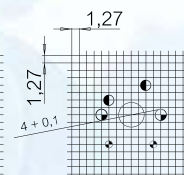
with fixing pins



with fixing pins and LED

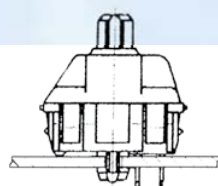


with fixing pins and diode or wire bridge

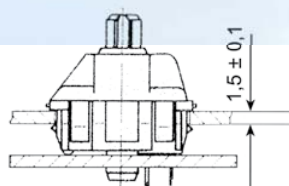


- $\varnothing 1,7 - 0,05$
- $\varnothing 1,5 \pm 0,05$
- ◇ $\varnothing 1,0 + 0,1$

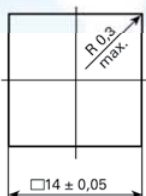
Keyswitch assembly



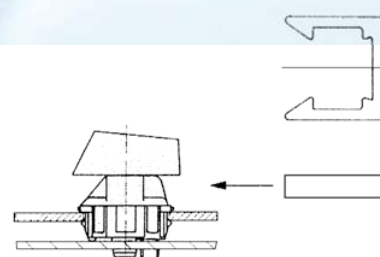
with fixing pins



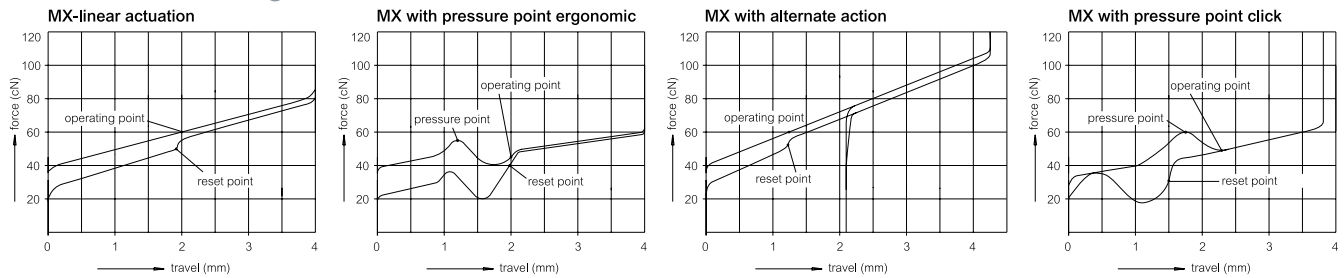
without fixing pins



Locking unit

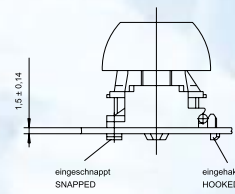
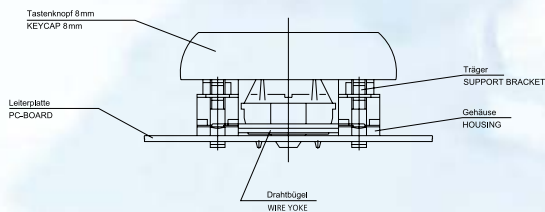


Force/Travel Diagram

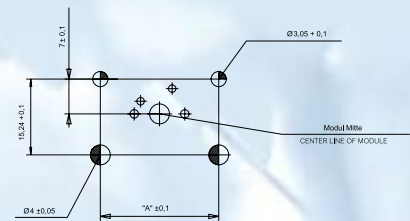


Multiple key mechanical

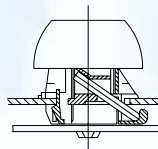
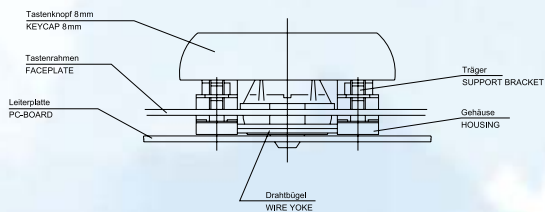
without frame



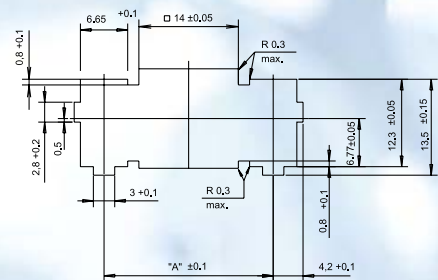
Drilling pattern



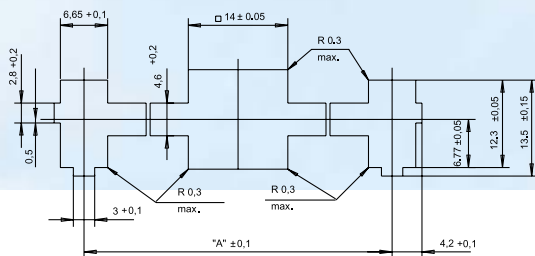
with frame



Cutout of frame for keycaps sizes 1x2, 1x2,25, 1x2,75



Cutout of frame for keycaps sizes 1x3, 1x7, 1x8, 1x9, 1x10



Size of keycap	1 x 2 1 x 2,25 1 x 2,75	1 x 3	1 x 8
Type of keycap	8 mm/Cyln	8 mm/Cyln	8 mm/Cyln
„A“ (in mm)	23,8	38,1	133,35
Part-No. (without pins)	G99-0224	G99-0225	G99-0226
Part-No. (with pins)	G99-0742	G99-0743	G99-0744