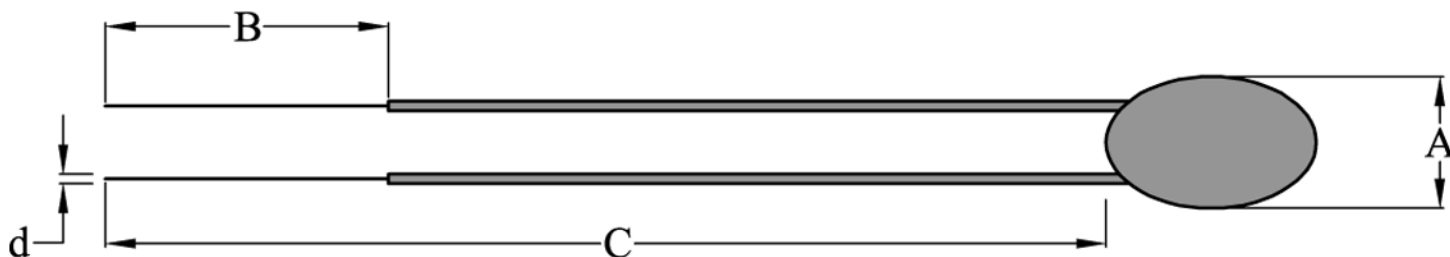


Part Number: PANE 103395-410  
RoHS Compliant



## Type

Wire AWG	Wire Length	Wire insulation
28 AWG tinned copper (Cu)	154.2 mm Nom	Teflon

Temp °C	"L"
-40	33.74
-30	17.80
-20	9.776
-10	5.570
0	3.279
10	1.998
20	1.252
25	1.000
30	0.8038
35	0.6499
40	0.5282
45	0.4316
50	0.3545
55	0.2949
60	0.2465
65	0.2070
70	0.1747
75	0.1481
80	0.1261
85	0.1077
90	0.0924
95	0.0796
100	0.0688
105	0.0597
110	0.0521
115	0.0456
120	0.0392
125	0.0345
130	0.0308
135	0.0268
140	0.0236
145	0.0209
150	0.0186
Beta	3950°K

## Electrical Specifications

Resistance @ 25 deg C	10000 $\Omega \pm 10\%$
Beta	3950° K $\pm 2\%$
Curve	L
Dissipation Constant	3.0 mW/°C
Time Constant	6 seconds
Operating Temp.	-50°C to +150°C

## Mechanical Specifications

A	2.8 mm $\pm 0.3$ mm
B	6.0 mm
C	154.2 mm Nom
d	0.2 mm

Revision Date: January 11, 2008

Ametherm, Inc. 3111 N. Deer Run Road #4 Carson City, NV 89701  
Telephone: (800) 808-2434 (775) 884-2434 Fax: (775) 884-0670  
www.ametherm.com