

Gaps Between Spring
Tabs <120° (3.0mm)

Two Point EMI Ground Path
on Each of Nine Bezel Springs

Three Center EMI Pins

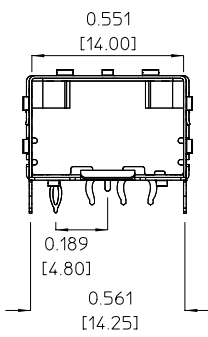
Four Point Soldering of
Top to Base (2 indicated)

Eleven press-fit (compliant) pins
for single sided use in .062+ (1.57+mm)
PCB's with tin plated through holes.

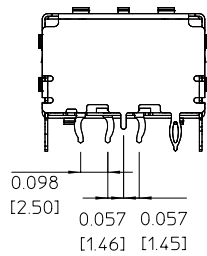
Dual side "belly-to-belly" use requires
.093" (2.36 mm) minimum PCB thickness.

Material full-hard, tin plated
brass or bronze .010" (0.25mm) thick.

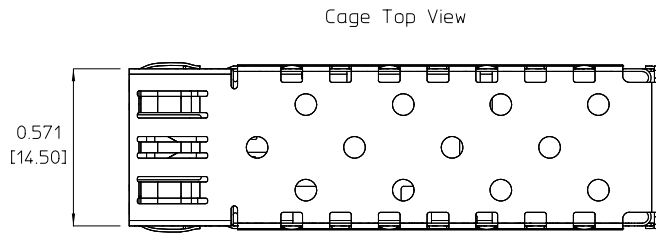
EC NO: USY2003-0028 DRWN: KLOYD 2002/09/19 CHKD: BRUSSELL 2002/09/19 APPR: KLOYD 2002/10/01 REV DESCRIPTION	QUALITY SYMBOLS	GENERAL TOLERANCES (UNLESS SPECIFIED)		SCALE 3:1	DESIGN UNITS METRIC	THIRD ANGLE PROJECTION	REVISE ON CAD ONLY
	▽-0	4 PLACES ±	±	DIMENSION STYLE IN/MM		TITLE SFP CAGE ASSEMBLY WITH 11 PRESS-FIT LEGS AND 3 EMI CLIPS	
	▽-0	3 PLACES ±	±.002	DRAWN BY DIRKERS	DATE 2001/12/18	MOLEX INCORPORATED	
		2 PLACES ±	±0.05	CHECKED BY BRUSSELL	DATE 2001/12/18	MATERIAL NO. 73927-0008	DOCUMENT NO. SD-73927-008
		1 PLACE ±	±	APPROVED BY BRUSSELL		DATE 2001/12/18	
		ANGULAR ±1/2°		THIS DRAWING CONTAINS INFORMATION THAT IS PROPRIETARY TO MOLEX INCORPORATED AND SHOULD NOT BE USED WITHOUT WRITTEN PERMISSION			
		DRAFT WHERE APPLICABLE MUST REMAIN WITHIN DIMENSIONS					



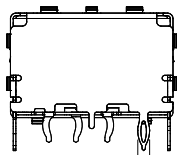
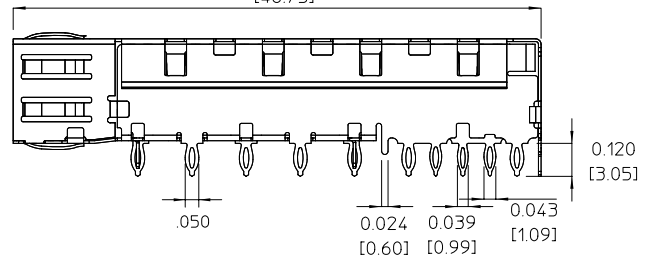
Cage Front View



Center EMI Pins



Cage Top View

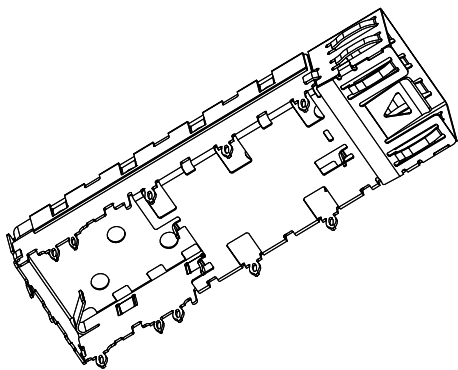


Cage Rear View

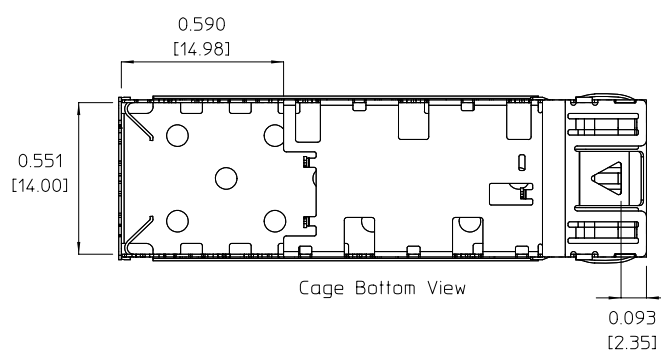
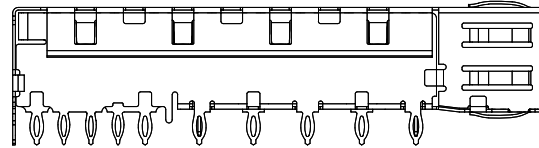
EC NO: USY2002-0836 DRWN: KLOYD 2002/09/19 CHKD: BRUSSELL 2002/09/19 APPR: KLOYD 2002/10/01	QUALITY SYMBOLS	GENERAL TOLERANCES (UNLESS SPECIFIED)	SCALE 3:1	DESIGN UNITS METRIC	THIRD ANGLE PROJECTION	REVISE ON CAD ONLY
	▽-0 ∇-0	4 PLACES ± --- ± --- 3 PLACES ± --- ± .002 2 PLACES ± 0.05 ± --- 1 PLACE ± --- ± ---	DIMENSION STYLE IN/MM DRAWN BY DIRKERS DATE 2001/12/18 CHECKED BY BRUSSELL DATE 2001/12/18 APPROVED BY BRUSSELL DATE 2001/12/18	TITLE SFP CAGE ASSEMBLY WITH 11 PRESS-FIT LEGS AND 3 EMI CLIPS MOLEX MOLEX INCORPORATED		
		ANGULAR ± 1/2° DRAFT WHERE APPLICABLE MUST REMAIN WITHIN DIMENSIONS	MATERIAL NO. 73927-0008 DOCUMENT NO. SD-73927-008	SHEET NO. 2 OF 7		
		THIS DRAWING CONTAINS INFORMATION THAT IS PROPRIETARY TO MOLEX INCORPORATED AND SHOULD NOT BE USED WITHOUT WRITTEN PERMISSION.				

10 9 8 7 6 5 4 3 2

F
E
D
C
B
A



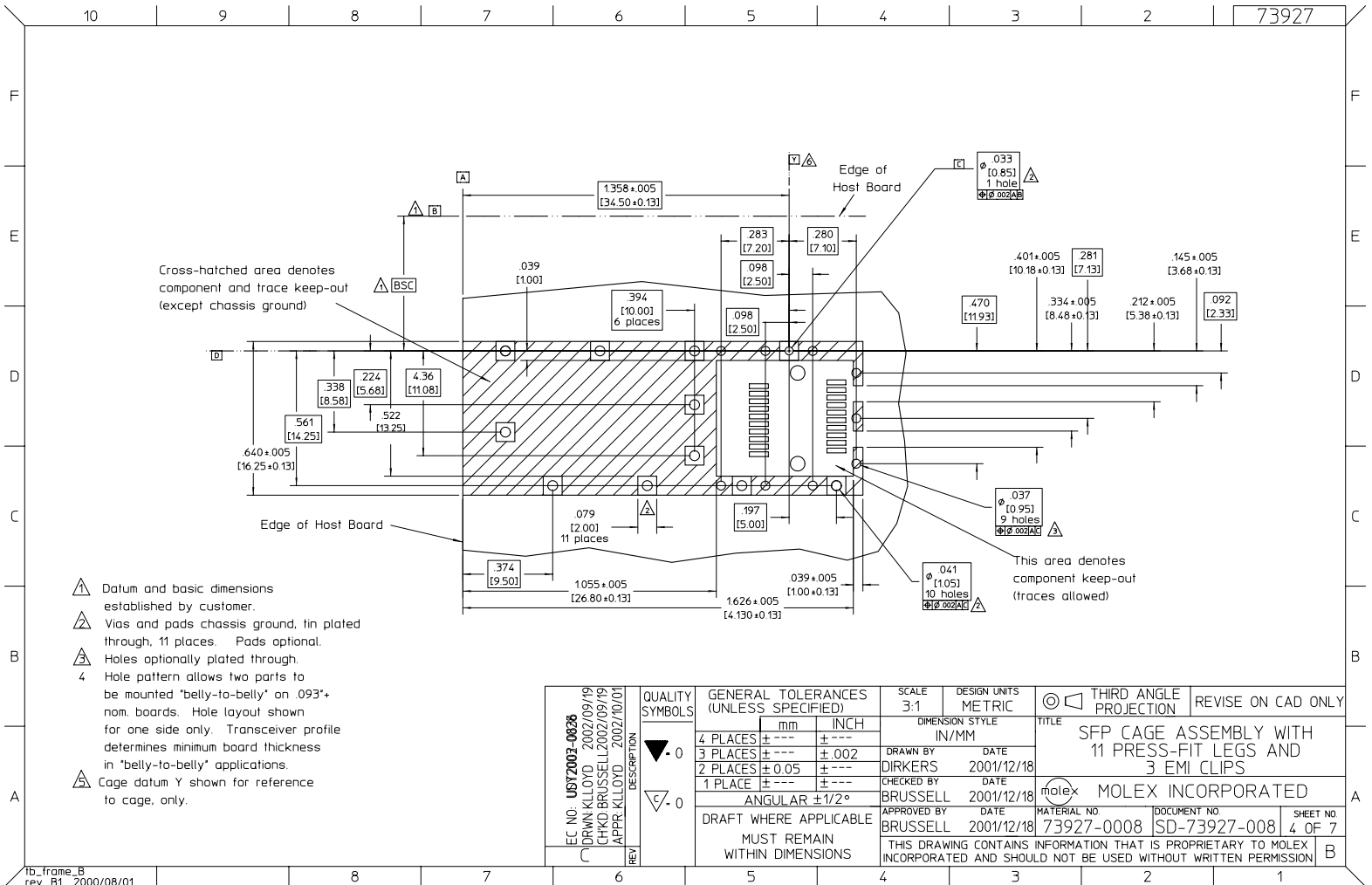
Isometric
Scale 2.5:1



Cage Bottom View

EC NO. USNY2002Z-00226 DRWN KLOYD 2002/09/19 CHKD BRUSSELL 2002/09/19 APPR KLOYD 2002/10/01 REV C	QUALITY SYMBOLS	GENERAL TOLERANCES (UNLESS SPECIFIED)	SCALE 3:1	DESIGN UNITS METRIC	THIRD ANGLE PROJECTION	REVISE ON CAD ONLY
	▼-0 ∇-0	4 PLACES ± --- ± --- 3 PLACES ± --- ± .002 2 PLACES ± 0.05 ± --- 1 PLACE ± --- ± ---	DIMENSION STYLE IN/MM DRAWN BY DIRKERS DATE 2001/12/18 CHECKED BY BRUSSELL DATE 2001/12/18 APPROVED BY BRUSSELL DATE 2001/12/18	TITLE SFP CAGE ASSEMBLY WITH 11 PRESS-FIT LEGS AND 3 EMI CLIPS MOLEX INCORPORATED		
		ANGULAR ± 1/2° DRAFT WHERE APPLICABLE MUST REMAIN WITHIN DIMENSIONS	MATERIAL NO. 73927-0008 DOCUMENT NO. SD-73927-008 SHEET NO. 3 OF 7	THIS DRAWING CONTAINS INFORMATION THAT IS PROPRIETARY TO MOLEX INCORPORATED AND SHOULD NOT BE USED WITHOUT WRITTEN PERMISSION		
	REV					

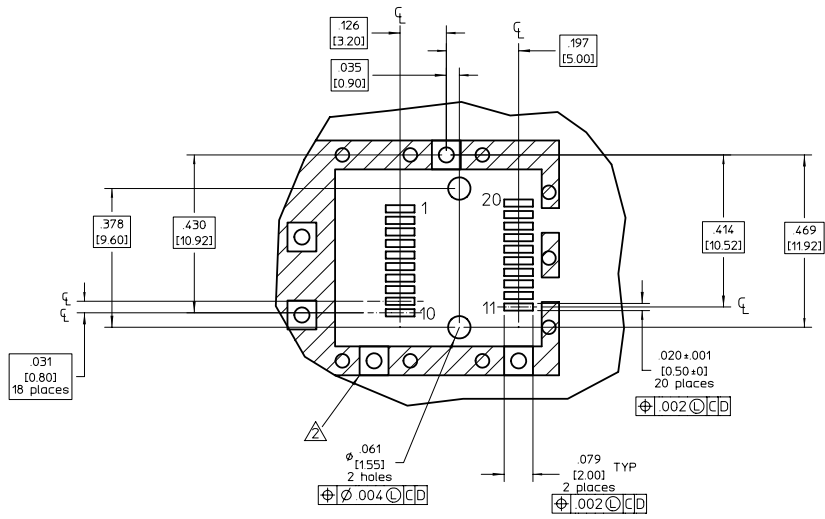
8 7 6 5 4 3 2 1



- ▲ Datum and basic dimensions established by customer.
- ▲ Vias and pads chassis ground, tin plated through, 11 places. Pads optional.
- ▲ Holes optionally plated through.
- 4 Hole pattern allows two parts to be mounted 'belly-to-belly' on .093" nom. boards. Hole layout shown for one side only. Transceiver profile determines minimum board thickness in 'belly-to-belly' applications.
- ▲ Cage datum Y shown for reference to cage, only.

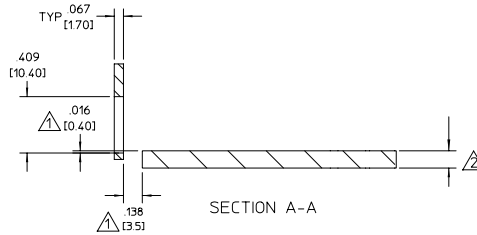
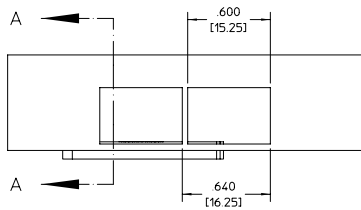
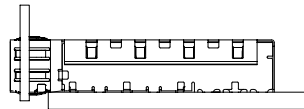
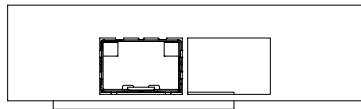
EC NO: US72003-0028 DRWN: KLOYD 2002/09/19 CHKD: BRUSSELL 2002/09/19 APPR: KLOYD 2002/10/01 REV DESCRIPTION	QUALITY SYMBOLS	GENERAL TOLERANCES (UNLESS SPECIFIED)	SCALE 3:1	DESIGN UNITS METRIC	THIRD ANGLE PROJECTION	REVISE ON CAD ONLY
	▼ -0	4 PLACES ± --- ± --- 3 PLACES ± --- ± .002 2 PLACES ± 0.05 ± --- 1 PLACE ± --- ± ---	mm INCH	DIMENSION STYLE IN/MM	TITLE SFP CAGE ASSEMBLY WITH 11 PRESS-FIT LEGS AND 3 EMI CLIPS	
	∇ -0	ANGULAR ± 1/2°		DRAWN BY DIRKERS DATE 2001/12/18	CHECKED BY BRUSSELL DATE 2001/12/18	MATERIAL NO. MOLEX INCORPORATED
		DRAFT WHERE APPLICABLE MUST REMAIN WITHIN DIMENSIONS		APPROVED BY BRUSSELL DATE 2001/12/18	DOCUMENT NO. 73927-0008	SHEET NO. 4 OF 7
THIS DRAWING CONTAINS INFORMATION THAT IS PROPRIETARY TO MOLEX INCORPORATED AND SHOULD NOT BE USED WITHOUT WRITTEN PERMISSION.						

tb_frame_B
rev. B1 2000/08/01



1. Connector pad pattern per MSA, will accommodate surface mount Molex connector 74441 or equivalent.
 △ Cage mounting pads not required for press-fit application.

EC NO: UBY2002-0626 DRWN: KLOYD 2002/09/19 CHKD: BRUSSELL 2002/09/19 APPR: KLOYD 2002/10/01	QUALITY SYMBOLS	GENERAL TOLERANCES (UNLESS SPECIFIED)	SCALE 4:1	DESIGN UNITS METRIC	THIRD ANGLE PROJECTION	REVISE ON CAD ONLY
	▽-0	4 PLACES ± --- ± --- 3 PLACES ± --- ± .002 2 PLACES ± 0.05 ± --- 1 PLACE ± --- ± ---	DIMENSION STYLE IN/MM		TITLE SFP CAGE ASSEMBLY WITH 11 PRESS-FIT LEGS AND 3 EMI CLIPS	
	∠-0	ANGULAR ± 1/2°	DRAWN BY DIRKERS	DATE 2001/12/18	MATERIAL NO. MOLEX INCORPORATED	
	∠	DRAFT WHERE APPLICABLE MUST REMAIN WITHIN DIMENSIONS	CHECKED BY BRUSSELL	DATE 2001/12/18	APPROVED BY BRUSSELL	DATE 2001/12/18
THIS DRAWING CONTAINS INFORMATION THAT IS PROPRIETARY TO MOLEX INCORPORATED AND SHOULD NOT BE USED WITHOUT WRITTEN PERMISSION.						



⚠ Relational geometry per MSA standard.
 ⚠ See sheet 1 for PCB thickness details.

EC NO: USY2002-06386 DRWN: KILLOYD 2002/09/19 CHKD: BRUSSELL 2002/09/19 APPR: KILLOYD 2002/10/01	QUALITY SYMBOLS	GENERAL TOLERANCES (UNLESS SPECIFIED)	SCALE 1.5:1	DESIGN UNITS METRIC	THIRD ANGLE PROJECTION	REVISE ON CAD ONLY
	▼-0 ∇-0	4 PLACES ± --- ± --- 3 PLACES ± --- ± .002 2 PLACES ± 0.05 ± --- 1 PLACE ± --- ± ---	DIMENSION STYLE IN/MM		TITLE	
		ANGULAR ± 1/2°	DRAWN BY DIRKERS DATE 2001/12/18		SFP CAGE ASSEMBLY WITH 11 PRESS-FIT LEGS AND 3 EMI CLIPS	
		DRAFT WHERE APPLICABLE MUST REMAIN WITHIN DIMENSIONS	CHECKED BY BRUSSELL DATE 2001/12/18		MOLEX INCORPORATED	
REV C			APPROVED BY BRUSSELL DATE 2001/12/18	MATERIAL NO. 73927-0008	DOCUMENT NO. SD-73927-008	SHEET NO. 6 OF 7
THIS DRAWING CONTAINS INFORMATION THAT IS PROPRIETARY TO MOLEX INCORPORATED AND SHOULD NOT BE USED WITHOUT WRITTEN PERMISSION.						

DATE	REV	CHANGES	REASONS	APPROVAL
2001/06/30	A	INITIAL DRAWING		CD
2002/01/31	B	SHEET 1:B9&C4&E2: TEXT CHANGE, SHEET 4:B9: TEXT CHANGE, SHEET 6, B9: TEXT CHANGE, D3: NOTE ADDED	REMOVE 3 EMI PINS. REPLACE WITH COUNTERCUTS. CUSTOMER REQUEST.	CD
2002/09/19	C	SHEET 1:B9&C4&E2: TEXT CHANGE, SHEET 4:B9: TEXT CHANGE, SHEET 6, B9: TEXT CHANGE, D3: NOTE ADDED	CORRECTION	KL

EC NO: USY2003-0028 DRWN: KILLOYD 2002/09/19 CHK: BRUSSELL APPR: KILLOYD 2002/10/01 REV DESCRIPTION	QUALITY SYMBOLS	GENERAL TOLERANCES (UNLESS SPECIFIED)	SCALE 1:1	DESIGN UNITS METRIC	THIRD ANGLE PROJECTION	REVISE ON CAD ONLY
		4 PLACES ± --- ± ---	DIMENSION STYLE IN/MM	TITLE	SFP CAGE ASSEMBLY WITH 11 PRESS-FIT LEGS AND 3 EMI CLIPS	
		5 PLACES ± --- ± 0.02	DRAWN BY DIRKERS DATE 2001/12/18	MOLEX INCORPORATED		
		2 PLACES ± 0.05 ± ---	CHECKED BY BRUSSELL DATE 2001/12/18	MATERIAL NO 739270008 DOCUMENT NO SD-73927-008 SHEET NO 7 OF 7		
1 PLACE ± --- ± ---	APPROVED BY BRUSSELL DATE 2001/12/18	DRAFT WHERE APPLICABLE MUST REMAIN WITHIN DIMENSIONS		THIS DRAWING CONTAINS INFORMATION THAT IS PROPRIETARY TO MOLEX INCORPORATED AND SHOULD NOT BE USED WITHOUT WRITTEN PERMISSION		