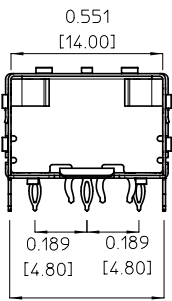


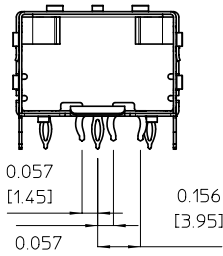
Fifteen press-fit (compliant) pins

Material full-hard, tin plated
brass or bronze .010" thick.

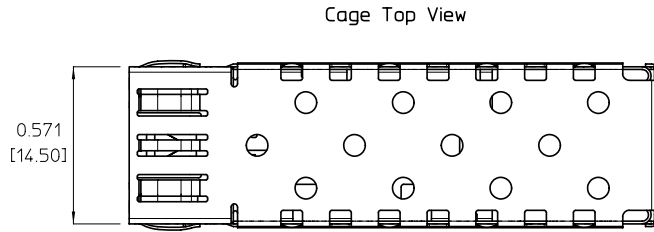
EC NO: UDT2002-0009 DRWN: DIRKERS 2001/07/02 CHKD: DIRKERS 2001/07/02 APPR: BRUSSELL 2001/07/03 REV A	QUALITY SYMBOLS	GENERAL TOLERANCES (UNLESS SPECIFIED)		SCALE 3:1	DESIGN UNITS METRIC	THIRD ANGLE PROJECTION	REVISE ON CAD ONLY
	▽-0	4 PLACES ±	±	DIMENSION STYLE IN/MM		TITLE SFP CAGE ASSEMBLY 15 PRESS-FIT LEGS AND 3 EMI CLIPS	
	▽-0	3 PLACES ±	±.002	DRAWN BY DIRKERS	DATE 2001/07/02	MOLEX INCORPORATED	
		2 PLACES ±	±	CHECKED BY DIRKERS	DATE 2001/07/02	MATERIAL NO. 73927-0009	DOCUMENT NO. SD-73927-009
		1 PLACE ±	±0.05	APPROVED BY		THIS DRAWING CONTAINS INFORMATION THAT IS PROPRIETARY TO MOLEX INCORPORATED AND SHOULD NOT BE USED WITHOUT WRITTEN PERMISSION	
		ANGULAR ±1/2°		DATE			
		DRAFT WHERE APPLICABLE MUST REMAIN WITHIN DIMENSIONS					



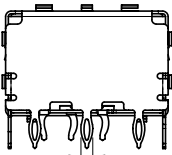
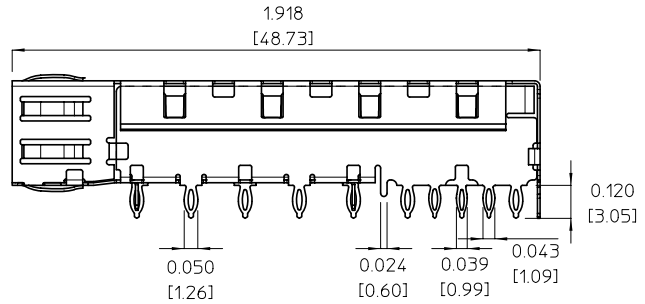
Cage Front View



Center EMI Pins



Cage Top View

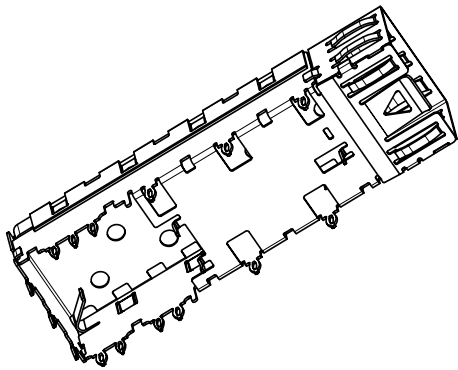


Cage Rear View

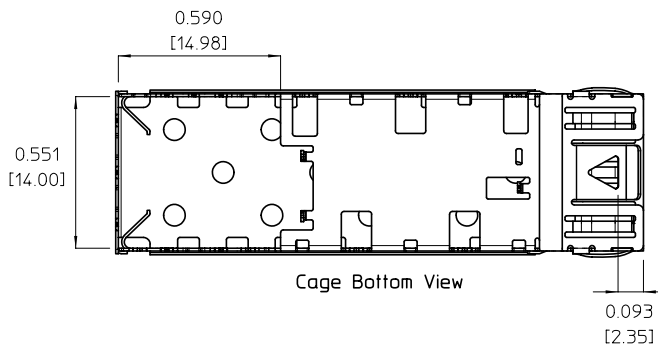
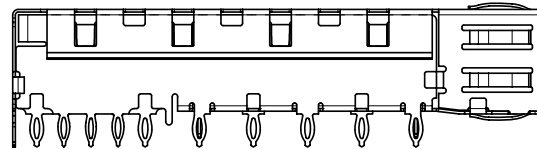
EC NO: UDT2002-0009 DRWN: DIRKERS 2001/07/02 CHKD: DIRKERS 2001/07/02 APPR: BRUSSELL 2001/07/03	QUALITY SYMBOLS	GENERAL TOLERANCES (UNLESS SPECIFIED)	SCALE 5:1	DESIGN UNITS METRIC	THIRD ANGLE PROJECTION	REVISE ON CAD ONLY
	▽-0 ∇-0	4 PLACES ± --- ± --- 3 PLACES ± --- ± .002 2 PLACES ± --- ± --- 1 PLACE ± 0.05 ± --- ANGULAR ± 1/2°	DIMENSION STYLE IN/MM		TITLE SFP CAGE ASSEMBLY 15 PRESS-FIT LEGS AND 3 EMI CLIPS	
		DRAFT WHERE APPLICABLE MUST REMAIN WITHIN DIMENSIONS	DRAWN BY DIRKERS CHECKED BY DIRKERS APPROVED BY	DATE 2001/07/02 DATE 2001/07/02 DATE	MOLEX INCORPORATED MATERIAL NO. 73927-0009 DOCUMENT NO. SD-73927-009	
		THIS DRAWING CONTAINS INFORMATION THAT IS PROPRIETARY TO MOLEX INCORPORATED AND SHOULD NOT BE USED WITHOUT WRITTEN PERMISSION.			SHEET NO. 2 OF 6 B	

10 9 8 7 6 5 4 3 2

F
E
D
C
B
A



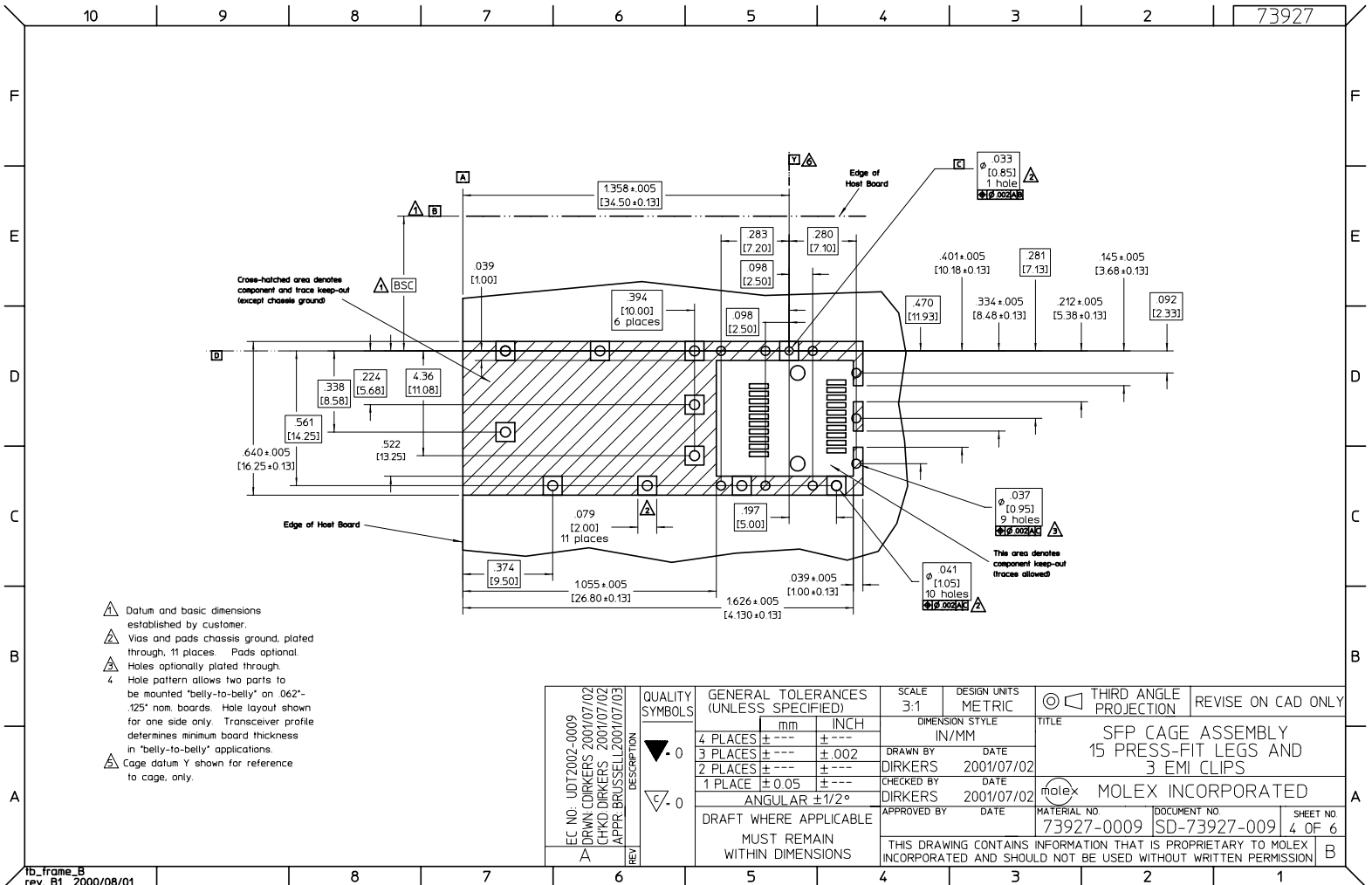
Isometric
Scale 2.5:1



Cage Bottom View

EC NO: UDT2002-0009 DRWN: DIRKERS 2001/07/02 CHKD: DIRKERS 2001/07/02 APPR: BRUSSELL 2001/07/03	QUALITY SYMBOLS	GENERAL TOLERANCES (UNLESS SPECIFIED)	SCALE 5:1	DESIGN UNITS METRIC	THIRD ANGLE PROJECTION	REVISE ON CAD ONLY
	▽-0 □-0	4 PLACES ± --- ± --- 3 PLACES ± --- ± .002 2 PLACES ± --- ± --- 1 PLACE ± 0.05 ± ---	DIMENSION STYLE IN/MM		TITLE	
		ANGULAR ± 1/2°	DRAWN BY DATE DIRKERS 2001/07/02		SFP CAGE ASSEMBLY 15 PRESS-FIT LEGS AND 3 EMI CLIPS	
	DRAFT WHERE APPLICABLE MUST REMAIN WITHIN DIMENSIONS	CHECKED BY DATE DIRKERS 2001/07/02		APPROVED BY DATE		MOLEX INCORPORATED MATERIAL NO. 73927-0009 DOCUMENT NO. SD-73927-009 SHEET NO. 3 OF 6
A	THIS DRAWING CONTAINS INFORMATION THAT IS PROPRIETARY TO MOLEX INCORPORATED AND SHOULD NOT BE USED WITHOUT WRITTEN PERMISSION.					B

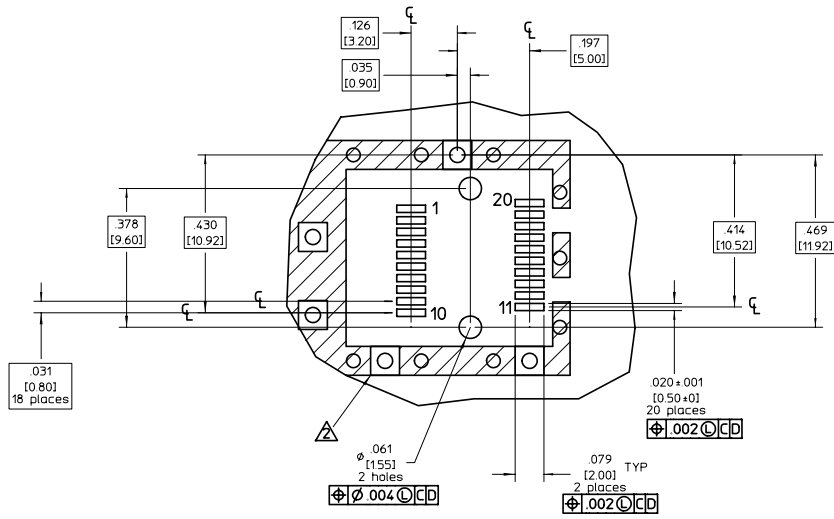
8 7 6 5 4 3 2 1



- △ Datum and basic dimensions established by customer.
- △ Vias and pads chassis ground, plated through, 11 places. Pads optional.
- △ Holes optionally plated through.
- △ Hole pattern allows two parts to be mounted "belly-to-belly" on 062"-125" nom. boards. Hole layout shown for one side only. Transceiver profile determines minimum board thickness in "belly-to-belly" applications.
- △ Cage datum Y shown for reference to cage, only.

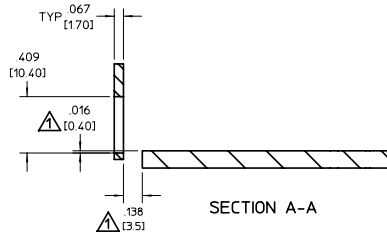
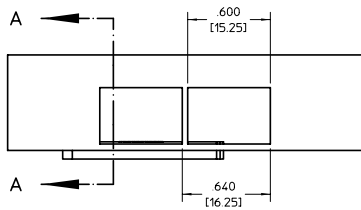
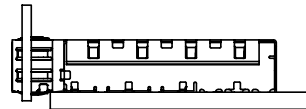
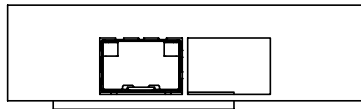
EC NO: UDT2002-0009 DRWN: DIRKERS 2001/07/02 CHKD: DIRKERS 2001/07/02 APPR: BRUSSELL 2001/07/03	QUALITY SYMBOLS	GENERAL TOLERANCES (UNLESS SPECIFIED)	SCALE 3:1	DESIGN UNITS METRIC	THIRD ANGLE PROJECTION	REVISE ON CAD ONLY
	▽ -0	4 PLACES ± --- ± ---	DIMENSION STYLE IN/MM		TITLE SFP CAGE ASSEMBLY 15 PRESS-FIT LEGS AND 3 EMI CLIPS	
	▽ -0	3 PLACES ± --- ± .002	DRAWN BY DIRKERS	DATE 2001/07/02	MATERIAL NO. MOLEX INCORPORATED	
		2 PLACES ± --- ± ---	CHECKED BY DIRKERS	DATE 2001/07/02	DOCUMENT NO. 73927-0009	SHEET NO. 4 OF 6
	1 PLACE ± 0.05 ± ---	ANGULAR ± 1/2°	APPROVED BY		DATE	
		DRAFT WHERE APPLICABLE MUST REMAIN WITHIN DIMENSIONS	THIS DRAWING CONTAINS INFORMATION THAT IS PROPRIETARY TO MOLEX INCORPORATED AND SHOULD NOT BE USED WITHOUT WRITTEN PERMISSION			

16_frame_B
rev. B1 2000/08/01



1 Connector pad pattern per MSA, will accommodate surface mount Molex connector 74441 or equivalent.
 △ Cage mounting pads not required for press-fit application.

EC NO: UDT2002-0009 DRWN: DIRKERS 2001/07/02 CHKD: DIRKERS 2001/07/02 APPR: BRUSSELL 2001/07/03	QUALITY SYMBOLS	GENERAL TOLERANCES (UNLESS SPECIFIED)	SCALE 3:1	DESIGN UNITS METRIC	THIRD ANGLE PROJECTION	REVISE ON CAD ONLY
	▽ - 0	4 PLACES ± --- ± --- 3 PLACES ± --- ± .002 2 PLACES ± --- ± --- 1 PLACE ± 0.05 ± ---	mm INCH	DIMENSION STYLE IN/MM	TITLE SFP CAGE ASSEMBLY 15 PRESS-FIT LEGS AND 3 EMI CLIPS	
	∠ - 0	ANGULAR ± 1/2°		DRAWN BY DIRKERS DATE 2001/07/02 CHECKED BY DIRKERS DATE 2001/07/02	MATERIAL NO. 73927-0009	DOCUMENT NO. SD-73927-009
	∠ - 0	DRAFT WHERE APPLICABLE MUST REMAIN WITHIN DIMENSIONS		APPROVED BY DATE	MATERIAL NO. 73927-0009	DOCUMENT NO. SD-73927-009
REV A			THIS DRAWING CONTAINS INFORMATION THAT IS PROPRIETARY TO MOLEX INCORPORATED AND SHOULD NOT BE USED WITHOUT WRITTEN PERMISSION.			



1 Relational geometry per MSA standard.

EC NO: UDT2002-0009 DRWN: DIRKERS 2001/07/02 CHKD: DIRKERS 2001/07/02 APPR: BRUSSELL 2001/07/03	QUALITY SYMBOLS	GENERAL TOLERANCES (UNLESS SPECIFIED)	SCALE 3:1	DESIGN UNITS METRIC	THIRD ANGLE PROJECTION	REVISE ON CAD ONLY
	▽-0	4 PLACES ± --- ± ---	DIMENSION STYLE IN/MM		TITLE SFP CAGE ASSEMBLY 15 PRESS-FIT LEGS AND 3 EMI CLIPS	
	▽C-0	3 PLACES ± --- ± .002	DRAWN BY DIRKERS	DATE 2001/07/02	MOLEX INCORPORATED	
		2 PLACES ± --- ± ---	CHECKED BY DIRKERS	DATE 2001/07/02	MATERIAL NO. 73927-0009	DOCUMENT NO. SD-73927-009
	1 PLACE ± 0.05 ± ---	ANGULAR ± 1/2°	APPROVED BY	DATE	THIS DRAWING CONTAINS INFORMATION THAT IS PROPRIETARY TO MOLEX INCORPORATED AND SHOULD NOT BE USED WITHOUT WRITTEN PERMISSION.	
		DRAFT WHERE APPLICABLE MUST REMAIN WITHIN DIMENSIONS				