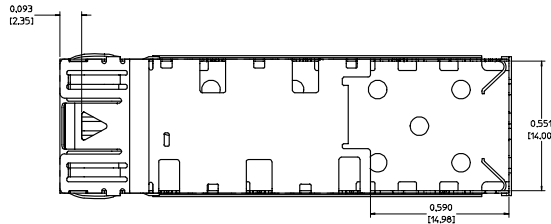
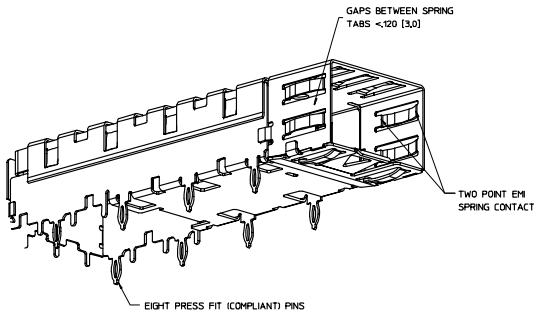
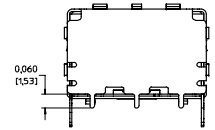
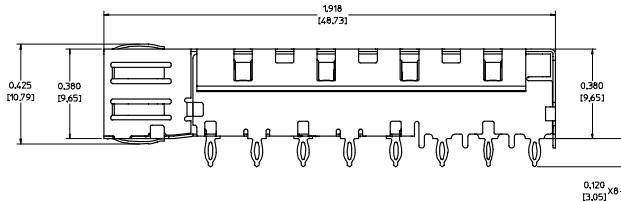
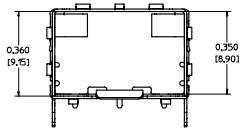
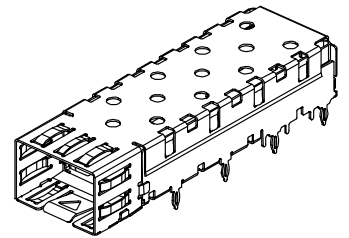
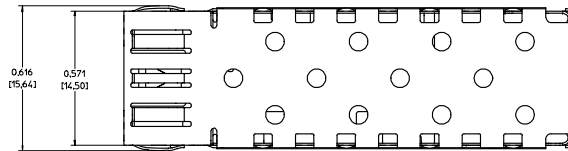


20 | 19 | 18 | 17 | 16 | 15 | 14 | 13 | 12 | 11 | 73927 | 9 | 8 | 7 | 6 | 5 | 4 | 3 | 2 | 1

- 1. MATERIAL: .010 [25] THICK COPPER ALLOY.
- 2. PLATING: TN (NON PLATED EDGES PERMISSIBLE).
- 3. SFP MSA COMPATIBLE.
- 4. MINIMUM PCB BOARD THICKNESS .090 [2.29].
- 5. REFER TO MOLEX DRAWING SD-73927-100 FOR PCB LAYOUT.



DEC. NO. US372005-001 DATE 2005/03/23 CHKD BY BRUSSELL/2005/03/24 APPR. BY BRUSSELL/2005/03/24	QUALITY SYMBOLS	GENERAL TOLERANCES (UNLESS SPECIFIED)	SCALE 5:1	DESIGN UNITS METRIC	THIRD ANGLE PROJECTION	REVISE ON CAD ONLY	
	4 PLACES ± --- 3 PLACES ± --- 2 PLACES ± 0.13 1 PLACE ± ---	DIMENSION STYLE IN/MM DRAWN BY K SIMONSON DATE 2005/03/23 CHECKED BY DATE	DIMENSION STYLE IN/MM DRAWN BY K SIMONSON DATE 2005/03/23 CHECKED BY DATE	TITLE SFP CAGE ASSEMBLY WITH EIGHT PRESS-FIT LEGS			
	DRAFT WHERE APPLICABLE MUST REMAIN WITHIN DIMENSIONS	APPROVED BY BRUSSELL DATE 2005/03/23	MATERIAL NO. 739270001 DOCUMENT NO. SD-73927-001	MOLEX INCORPORATED SHEET NO. 1 OF 2			
	THIS DRAWING CONTAINS INFORMATION THAT IS PROPRIETARY TO MOLEX INCORPORATED AND SHOULD NOT BE USED WITHOUT WRITTEN PERMISSION						

19 | 18 | 17 | 16 | 15 | 14 | 13 | 12 | 11 | 10 | 9 | 8 | 7 | 6 | 5 | 4 | 3 | 2 | 1

20 19 18 17 16 15 14 13 12 11 73927 9 8 7 6 5 4 3 2 1

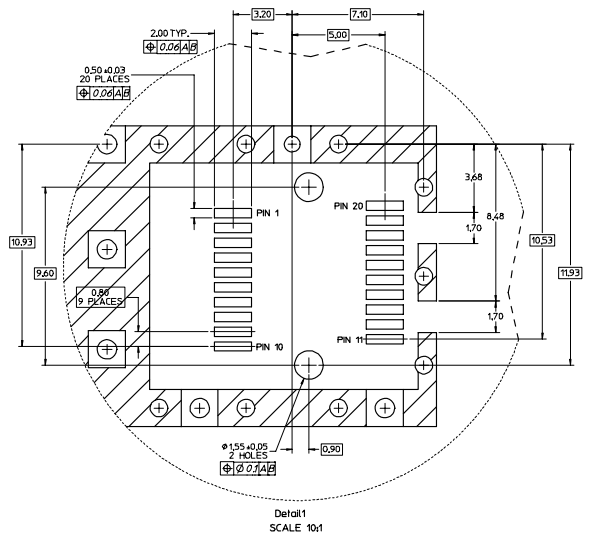
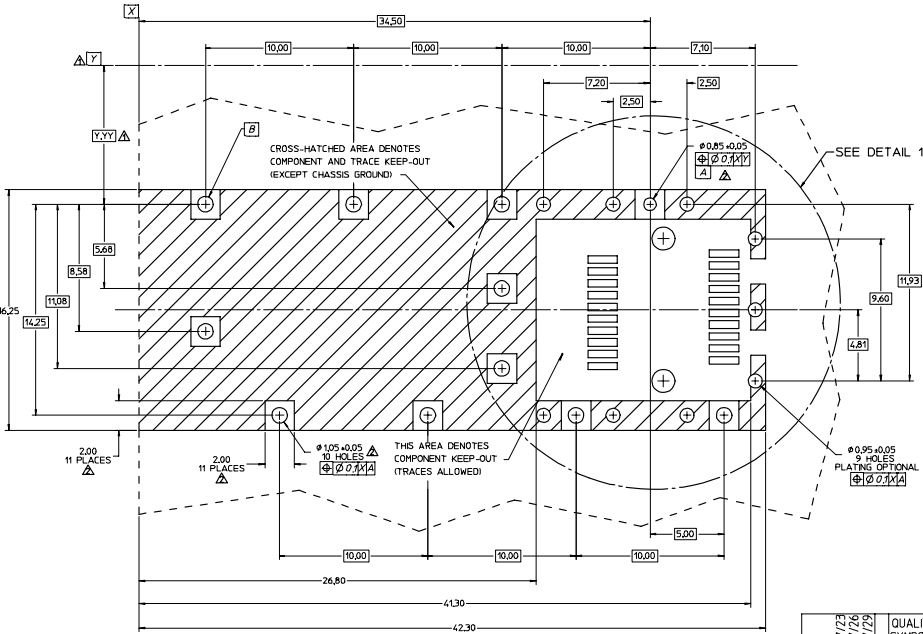
DATE	REV	CHANGES	COMMENTS
2005/03/23	F	REDRAWN, MOVED PCB DETAILS TO SD-73927-001	N/A

DEC. NO. USN/2005-001 CHKD BY BRUSSELL/2005/03/23 APPR. BRUSSELL/2005/03/24	QUALITY SYMBOLS	GENERAL TOLERANCES (UNLESS SPECIFIED)	SCALE 1:1	DESIGN UNITS METRIC	THIRD ANGLE PROJECTION	REVISE ON CAD ONLY
	▽-0 ▽-0	4 PLACES ± --- 3 PLACES ± --- ±.005 2 PLACES ± 0.13 ± --- 1 PLACE ± --- ± --- ANGULAR ± 1°	DIMENSION STYLE IN/MM DRAWN BY DATE KSIMONSON 2005/03/23 CHECKED BY DATE BRUSSELL 2005/03/23	TITLE SFP CAGE ASSEMBLY WITH EIGHT PRESS-FIT LEGS MOLEX MOLEX INCORPORATED		
	DRAFT WHERE APPLICABLE MUST REMAIN WITHIN DIMENSIONS	APPROVED BY DATE BRUSSELL 2005/03/23	MATERIAL NO. 739270001 DOCUMENT NO. SD-73927-001	SHEET NO. 2 OF 2		
THIS DRAWING CONTAINS INFORMATION THAT IS PROPRIETARY TO MOLEX INCORPORATED AND SHOULD NOT BE USED WITHOUT WRITTEN PERMISSION						

19 18 17 16 15 14 13 12 11 10 9 8 7 6 5 4 3 2 1

20 19 18 17 16 15 14 13 12 11 73927 9 8 7 6 5 4 3 2 1

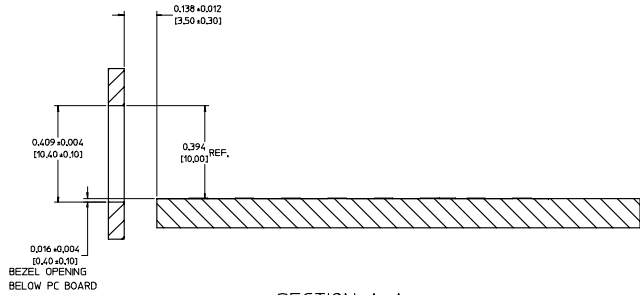
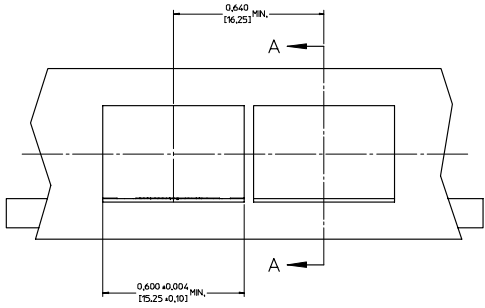
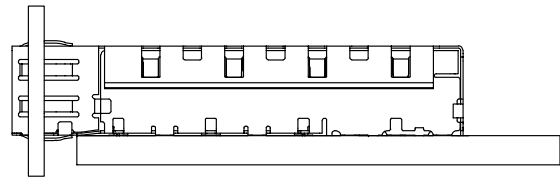
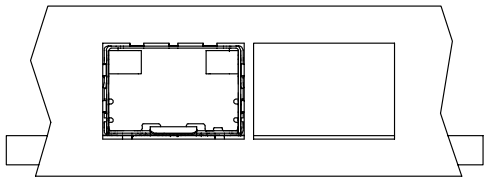
- 1 DATUM AND BASIC DIMENSIONS ESTABLISHED BY CUSTOMER.
- 2 PADS AND VIAS ARE CHASSIS GROUND.
- 3 HOLE LAYOUT SHOWN IS FOR SINGLE SIDED MOUNTING ONLY. BELLY TO BELLY MOUNTING REQUIRES LAYOUT MIRRORED ON OPPOSITE SIDE OF BOARD. CAGE DESIGN AND TRANSCIEVER PROFILE SHOULD BE CONSIDERED IN DETERMINING MINIMUM BOARD THICKNESS IN BELLY TO BELLY MOUNTING.
4. CONNECTOR PAD LAYOUT PER SFP MSA. WILL ACCOMMODATE MOLEX CONNECTOR SERIES 74441 OR EQUIVALENT.



EC NO. USV2005-0015 CHKD: BRUSSELL 2004/07/17 APPR: BRUSSELL 2004/07/19	QUALITY SYMBOLS	GENERAL TOLERANCES (UNLESS SPECIFIED)	SCALE 5:1	DESIGN UNITS METRIC	THIRD ANGLE PROJECTION	REVISE ON CAD ONLY														
	0 - DIMENSIONAL TOLERANCES 0 - ANGULAR	<table border="1"> <tr> <th></th> <th>mm</th> <th>INCH</th> </tr> <tr> <td>4 PLACES</td> <td>± .005</td> <td>± .0005</td> </tr> <tr> <td>3 PLACES</td> <td>± .005</td> <td>± .0005</td> </tr> <tr> <td>2 PLACES</td> <td>± 0.13</td> <td>± .005</td> </tr> <tr> <td>1 PLACE</td> <td>± .005</td> <td>± .0005</td> </tr> </table>		mm	INCH	4 PLACES	± .005	± .0005	3 PLACES	± .005	± .0005	2 PLACES	± 0.13	± .005	1 PLACE	± .005	± .0005	DIMENSION STYLE IN/MM DRAWN BY K SIMONSO CHECKED BY BRUSSELL APPROVED BY BRUSSELL	DATE 2004/07/08 DATE 2004/07/08 DATE 2004/07/08	TITLE SFP CAGE ASSEMBLY PCB & BEZEL LAYOUT PER SFP MSA MOLEX INCORPORATED
	mm	INCH																		
4 PLACES	± .005	± .0005																		
3 PLACES	± .005	± .0005																		
2 PLACES	± 0.13	± .005																		
1 PLACE	± .005	± .0005																		
DRAFT WHERE APPLICABLE MUST REMAIN WITHIN DIMENSIONS		THIS DRAWING CONTAINS INFORMATION THAT IS PROPRIETARY TO MOLEX INCORPORATED AND SHOULD NOT BE USED WITHOUT WRITTEN PERMISSION																		

20 19 18 17 16 15 14 13 12 11 73927 9 8 7 6 5 4 3 2 1

NOTE: ALL DIMENSIONS PER SFP MSA



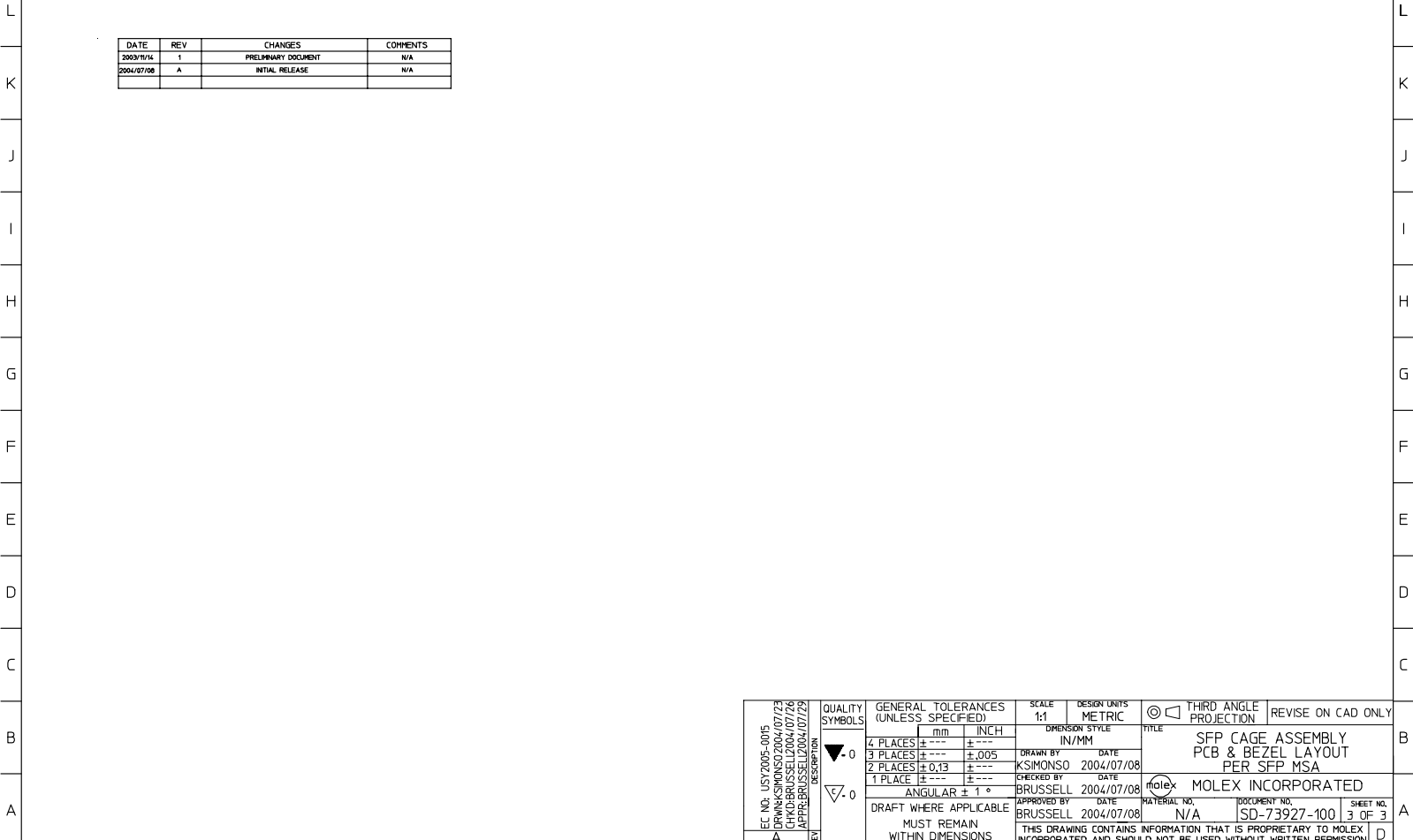
SECTION A-A

REC NO. USN2005-0015 DESIGNED BY K SIMONSO CHKD BY BRUSSELL 2004/07/08 APPR. BY BRUSSELL 2004/07/08	QUALITY SYMBOLS	GENERAL TOLERANCES (UNLESS SPECIFIED)	SCALE 5:1	DESIGN UNITS METRIC	THIRD ANGLE PROJECTION	REVISE ON CAD ONLY
	▽-0	DIMENSION STYLE 4 PLACES ± --- INCH 3 PLACES ± --- IN/MM 2 PLACES ± 0.13 ± --- 1 PLACE ± ---	DRAWN BY K SIMONSO	DATE 2004/07/08	TITLE SFP CAGE ASSEMBLY PCB & BEZEL LAYOUT PER SFP MSA	
	▽-0	ANGULAR ± 1°	CHECKED BY BRUSSELL	DATE 2004/07/08	MOLEX INCORPORATED	
	A	DRAFT WHERE APPLICABLE MUST REMAIN WITHIN DIMENSIONS	APPROVED BY BRUSSELL	DATE 2004/07/08	MATERIAL NO. N/A	DOCUMENT NO. SD-73927-100
THIS DRAWING CONTAINS INFORMATION THAT IS PROPRIETARY TO MOLEX INCORPORATED AND SHOULD NOT BE USED WITHOUT WRITTEN PERMISSION						

19 18 17 16 15 14 13 12 11 10 9 8 7 6 5 4 3 2 1

10/1/2004 Rev. BT 2000/06/01

20 19 18 17 16 15 14 13 12 11 73927 9 8 7 6 5 4 3 2 1



DATE	REV	CHANGES	COMMENTS
2003/11/14	1	PRELIMINARY DOCUMENT	N/A
2004/07/08	A	INITIAL RELEASE	N/A

EC NO. USN2005-0015 CHG: BRUSSELL 2004/07/28 APPR: BRUSSELL 2004/07/29	QUALITY SYMBOLS	GENERAL TOLERANCES (UNLESS SPECIFIED)	SCALE 1:1	DESIGN UNITS METRIC	THIRD ANGLE PROJECTION	REVISE ON CAD ONLY																														
	▽-0 ▽-0	<table border="1"> <thead> <tr> <th></th> <th>mm</th> <th>INCH</th> </tr> </thead> <tbody> <tr> <td>4 PLACES</td> <td>± .005</td> <td>± .0005</td> </tr> <tr> <td>3 PLACES</td> <td>± .013</td> <td>± .0005</td> </tr> <tr> <td>2 PLACES</td> <td>± .025</td> <td>± .0010</td> </tr> <tr> <td>1 PLACE</td> <td>± .050</td> <td>± .0020</td> </tr> </tbody> </table>		mm	INCH	4 PLACES	± .005	± .0005	3 PLACES	± .013	± .0005	2 PLACES	± .025	± .0010	1 PLACE	± .050	± .0020	<table border="1"> <thead> <tr> <th colspan="2">DIMENSION STYLE</th> </tr> <tr> <th>IN/MM</th> <th>DATE</th> </tr> </thead> <tbody> <tr> <td>DRAWN BY</td> <td>DATE</td> </tr> <tr> <td>KSIMONSO</td> <td>2004/07/08</td> </tr> <tr> <td>CHECKED BY</td> <td>DATE</td> </tr> <tr> <td>BRUSSELL</td> <td>2004/07/08</td> </tr> <tr> <td>APPROVED BY</td> <td>DATE</td> </tr> <tr> <td>BRUSSELL</td> <td>2004/07/08</td> </tr> </tbody> </table>	DIMENSION STYLE		IN/MM	DATE	DRAWN BY	DATE	KSIMONSO	2004/07/08	CHECKED BY	DATE	BRUSSELL	2004/07/08	APPROVED BY	DATE	BRUSSELL	2004/07/08	TITLE	SFP CAGE ASSEMBLY PCB & BEZEL LAYOUT PER SFP MSA
	mm	INCH																																		
4 PLACES	± .005	± .0005																																		
3 PLACES	± .013	± .0005																																		
2 PLACES	± .025	± .0010																																		
1 PLACE	± .050	± .0020																																		
DIMENSION STYLE																																				
IN/MM	DATE																																			
DRAWN BY	DATE																																			
KSIMONSO	2004/07/08																																			
CHECKED BY	DATE																																			
BRUSSELL	2004/07/08																																			
APPROVED BY	DATE																																			
BRUSSELL	2004/07/08																																			
DRAFT WHERE APPLICABLE MUST REMAIN WITHIN DIMENSIONS	ANGULAR ± 1°	MOLEX INCORPORATED	MATERIAL NO. N/A	DOCUMENT NO. SD-73927-100	SHEET NO. 3 OF 3																															
THIS DRAWING CONTAINS INFORMATION THAT IS PROPRIETARY TO MOLEX INCORPORATED AND SHOULD NOT BE USED WITHOUT WRITTEN PERMISSION																																				

19 18 17 16 15 14 13 12 11 10 9 8 7 6 5 4 3 2 1