

| REV | DOCUMENT | CHANGED BY | CHECK |
|-----|----------|--------------|-------|
| 1 | DR-5334 | GRT 6 MAR 00 | SAV |
| 2 | 200532 | SAV 27MAY00 | SAV |

ELECTRICAL CHARACTERISTICS

| | CONDITION | |
|-------------------------|--|---------------|
| SPECIFIED VOLTAGE RANGE | | 3.8 TO 30 VDC |
| MAX I _{off} | V _{cc} =30V, I _{sink} =20mA, -20°C<T<85°C, B<MAX OP | 9.0 mA |
| MAX I _{on} | V _{cc} =30V, I _{sink} =20mA, -20°C<T<85°C, B<MAX OP | 10.0 mA |
| RATED SINK CURRENT | | 20 mA |
| MAX V _{sat} | V _{cc} =3.8V, I _{sink} =20mA, B<MAX OP | 0.4 V |
| MAX LEAKAGE CURRENT | V _{out} =30V, V _{cc} =24V, B<MIN REL | 10 μA |
| RISE TIME 10% TO 90% | T=25°C, V _{cc} =12V, R ₂ =1.6 KΩ, C ₂ =20pf | 1.5 μS |
| FALL TIME 90% TO 10% | T=25°C, V _{cc} =12V, R ₂ =1.6 KΩ, C ₂ =20pf | 1.5 μS |

OPERATING SPECIFICATIONS

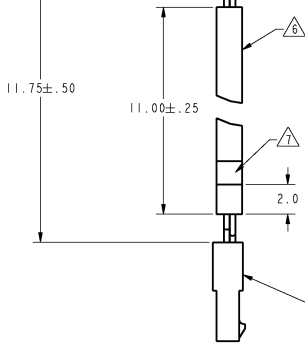
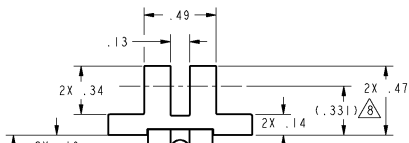
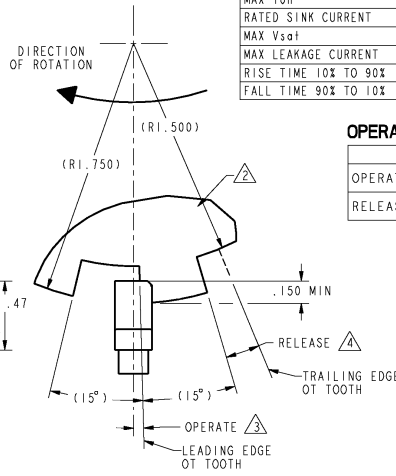
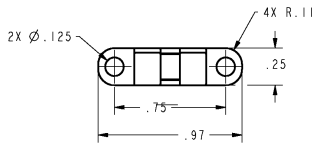
| | LIMIT | CONDITIONS |
|---------|-----------|---|
| OPERATE | 1.5°±2.0° | TARGET ENGAGEMENT .150 TO .300 (NOMINAL ENGAGEMENT IS .225) RPM 0 TO 5000 |
| RELEASE | 3.0°±2.5° | SLOT DEPTH .250 MIN |

ABSOLUTE MAXIMUM RATINGS

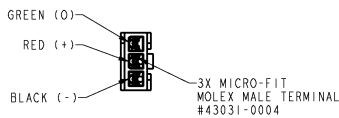
| | |
|--------------------------------------|---|
| TEMPERATURE | -20°C TO +85°C |
| SUPPLY VOLTAGE (V _s) | 3.8 VDC TO 30 VDC |
| VOLTAGE EXTERNALLY APPLIED TO OUTPUT | -0.5 TO +30 VDC |
| OUTPUT CURRENT | 50 mA |
| MAGNETIC FLUX | NO LIMIT, CIRCUIT CANNOT BE DAMAGED BY MAGNETIC OVERDRIVE |

NOTES

- 1 - MOUNTING SPECIFICATION: NON-FERROUS #4 MACHINE HEAD SCREWS WITH .25 OD WASHERS TORQUED TO 3-5 INCH LBS.
- 2 - SUGGESTED TARGET CONFIGURATION, MATERIAL: .045 LOW CARBON STEEL, HIGH PERMEABILITY, LOW RESIDUAL INDUCTION
- 3 - OPERATE (DEGREES) IS THE ANGULAR DISTANCE FROM THE LEADING EDGE OF THE TOOTH TO THE CENTERLINE OF THE SENSOR
- 4 - RELEASE (DEGREES) IS THE ANGULAR DISTANCE FROM THE TRAILING EDGE OF THE TOOTH TO THE CENTERLINE OF THE SENSOR
- 5 - OPERATING SPECIFICATION IS BASED ON TARGET SHOWN AND WILL VARY WITH TARGET GEOMETRY
- 6 - PVC-105 TUBING #8 (BLACK)
- 7 - LABEL IDENTIFYING CUSTOMER PART NUMBER, CUSTOMER REVISION NUMBER HONEYWELL, INC. CATALOG LISTING AND DATE CODE. LOCATE LABEL ON TUBING 2.0 INCHES FROM END OF TUBING/CONNECTOR SIDE
- 8 - DIMENSION DENOTES SENSOR ELEMENT POSITION



MICRO-FIT MOLEX CONNECTOR #43640-0301
INLINE PLUG HOUSING 3 CIRCUIT



| | | | | | | |
|--|-----------------------|--------------------------|----------------------------|----------------------------|------------|----------------------------------|
| UNLESS OTHERWISE SPECIFIED TOLERANCES ARE: | NO PLACE .X ±.040 ±.1 | ONE PLACE .XX ±.030 ±0.4 | TWO PLACE .XXX ±.015 ±0.15 | THREE PLACE .XXX ±.005 ±.1 | ANGLES ±.1 | RAW MATERIAL-COMMERCIAL STANDARD |
| | CHECK | GRT | 6 MAR 00 | CHECK | SAV | 6 MAR 00 |
| THIS DRAWING COVERS A PROPRIETARY ITEM AND IS THE PROPERTY OF HONEYWELL SENSING AND CONTROL. THIS DRAWING IS NOT TO BE COPIED OR USED WITHOUT THE PERMISSION OF HONEYWELL. | | | | | | |
| DIMENSIONS ARE TO BE MET BEFORE PROTECTIVE COATINGS ARE APPLIED | | | | | | |
| 3D PTC ASME Y14.5M-1994 | | | | | | |

| | |
|-------------------------------|----------|
| Honeywell | |
| Sensing and Control | |
| VANE SENSOR (MAGNETIC) | |
| SIZE | DWG TYPE |
| C | M |
| DRAWING NAME | REV |
| SR16C-J5 | 2 |
| SCALE 2 : 1 | WEIGHT |
| SHEET | 1 OF 1 |