

REV	DOCUMENT	CHANGED BY	CHECK
5	0001060	KED 07AUG03	SAV

ELECTRICAL CHARACTERISTICS

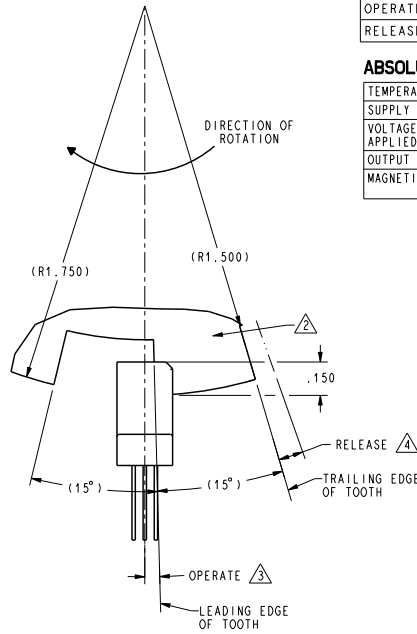
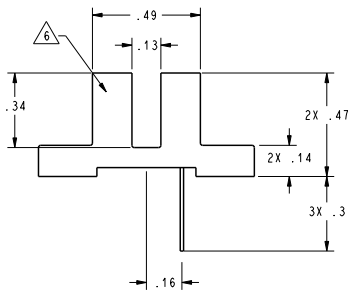
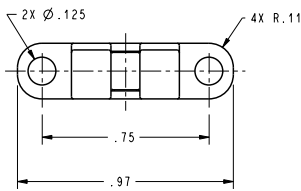
	CONDITION	
SPECIFIED VOLTAGE RANGE		3.8 TO 30 VDC
MAX I _{off}	V _{cc} =30V, I _{sink} =20mA, -20°C<T<+85°C, B>MAX OP	9.0 mA
MAX I _{on}	V _{cc} =30V, I _{sink} =20mA, -20°C<T<+85°C, B>MAX OP	10.0 mA
RATED SINK CURRENT		20 mA
MAX V _{sot}	V _{cc} =3.8V, I _{sink} =20mA, B>MAX OP	0.4 V
MAX LEAKAGE CURRENT	V _{out} =30V, V _{cc} =24V, B<MIN REL	10 μA
RISE TIME 10% TO 90%	T=25°C, V _{cc} =12V, R ₂ =1.6 KΩ, C ₂ =20pf	1.5 μS
FALL TIME 90% TO 10%	T=25°C, V _{cc} =12V, R ₂ =1.6 KΩ, C ₂ =20pf	1.5 μS

OPERATING SPECIFICATION \triangle \triangle \triangle

	LIMIT	CONDITIONS
OPERATE \triangle \triangle	1.5°±2.0°	TARGET ENGAGEMENT .150 TO .300 RPM 0 TO 5000
RELEASE \triangle \triangle	3.0°±2.5°	SLOT DEPTH .250 MIN

ABSOLUTE MAXIMUM RATINGS

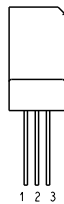
TEMPERATURE	-20°C TO +85°C
SUPPLY VOLTAGE (V _s)	3.8 VDC TO 30 VDC
VOLTAGE EXTERNALLY APPLIED TO OUTPUT	-0.5 TO +30 VDC
OUTPUT CURRENT	50 mA
MAGNETIC FLUX	NO LIMIT, CIRCUIT CANNOT BE DAMAGED BY MAGNETIC OVERDRIVE



NOTES

- 1 - MOUNTING SPECIFICATION: NON-FERROUS #4 MACHINE HEAD SCREWS WITH .25 OD WASHERS TORQUED TO 3-5 INCH LBS.
- \triangle SUGGESTED TARGET CONFIGURATION, MATERIAL: .045 LOW CARBON STEEL, HIGH PERMEABILITY, LOW RESIDUAL INDUCTION
- \triangle OPERATE (DEGREES) IS THE ANGULAR DISTANCE FROM THE LEADING EDGE OF THE TOOTH TO THE CENTERLINE OF THE SENSOR
- \triangle RELEASE (DEGREES) IS THE ANGULAR DISTANCE FROM THE TRAILING EDGE OF THE TOOTH TO THE CENTERLINE OF THE SENSOR
- \triangle OPERATING SPECIFICATION IS BASED ON TARGET SHOWN AND WILL VARY WITH TARGET GEOMETRY
- \triangle HONEYWELL PART NUMBER AND DATE CODE, ANY SURFACE

DEVICE PIN-OUT
1 OUTPUT (0)
2 GROUND (-)
3 Vsupply (+)



UNLESS OTHERWISE SPECIFIED TOLERANCES ARE:	FRAC	DECIMAL	ANGLE	POSITION	ASME	DATE
NO PLACE	X	±.040	±1			
ONE PLACE	.X	±.030	±0.4			
TWO PLACE	.XX	±.015	±0.15			
THREE PLACE	.XXX	±.005	±			
ANGLES		±	±			
RAW MATERIAL-COMMERCIAL STANDARD						

DRAWN	SAV	21DEC99
CHECK	SAV	21DEC99
THIS DRAWING COVERS A PROPRIETARY ITEM AND IS THE PROPERTY OF HONEYWELL. THIS DRAWING IS NOT TO BE COPIED OR USED WITHOUT THE PERMISSION OF HONEYWELL.		
DIMENSIONS ARE TO BE MET BEFORE PROTECTIVE COATINGS ARE APPLIED		
3D PTC	ASME Y14.5M-1994	

Honeywell			
TITLE VANE SENSOR (MAGNETIC)			
SIZE	DWG TYPE	DRAWING NAME	REV
C	I	SR16C-N	5
SCALE	3 : 1	WEIGHT	SHEET 1 OF 1