

CATALOG LISTING  
 SS94A1E  
 PAGE 1 OF 1  
 REFERENCE X89800-SS  
 RELEASE NO. PR-17167  
 ISSUE M 5  
 REVISIONS  
 A 0072441  
 B 0072704  
 C 0038894  
 D 0039911  
 SS 19MAY08  
 CHECK T M N 27 MAR 89  
 CHECK B L R 19MAY08  
 CHECK T M N 27 MAR 89  
 CHECK B L R 19MAY08  
 RASTER DRAWN  
 K. A. G 24 MAR 89  
 ANSI Y14.5M-1982 APPLIES

**MICRO SWITCH**  
 a Honeywell Division  
 FED. MFG. CODE 91224

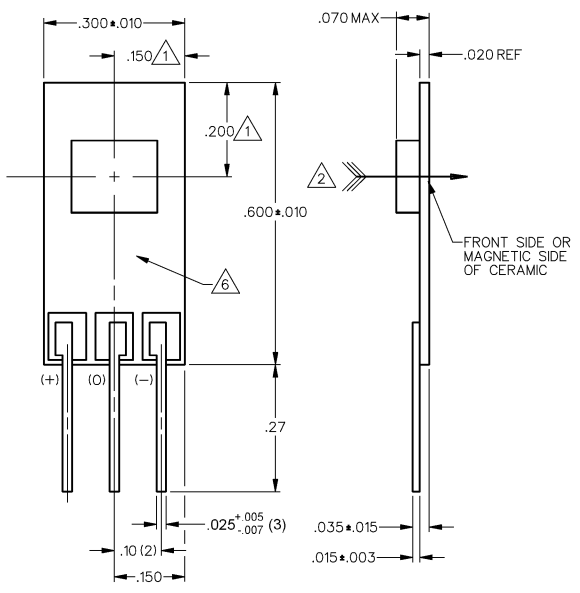
**LINEAR OUTPUT HALL EFFECT TRANSDUCER**

CATALOG LISTING  
**SS94A1E**

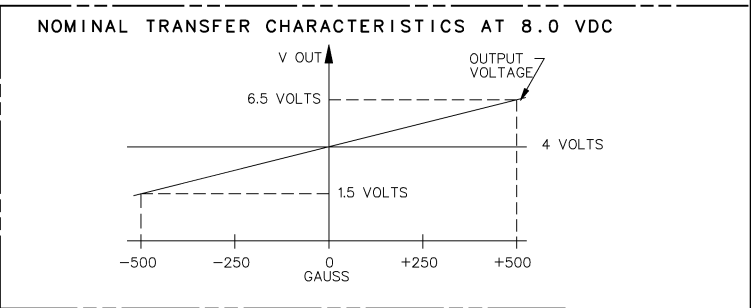
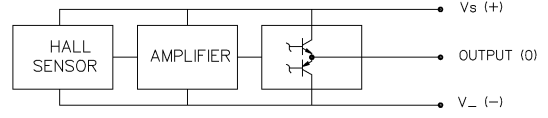
THIS DRAWING COVERS A PROPRIETARY ITEM AND IS THE PROPERTY OF MICRO SWITCH, A DIVISION OF HONEYWELL. THIS DRAWING IS NOT TO BE COPIED OR USED WITHOUT THE APPROVAL OF MICRO SWITCH

**OPERATING CHARACTERISTICS**

PARAMETER	MIN	TYP	MAX	UNITS	CONDITIONS/REMARKS
SUPPLY VOLTAGE	6.6	8.0	12.6	VOLTS	-40°C TO +125°C
SUPPLY CURRENT		13	30	mA	MAX @ 12.6 V @ -40°C
OUTPUT CURRENT			1	mA	SINKING OR SOURCING
OUTPUT SPAN		.625 V <sub>S</sub>		VOLTS	-500G TO +500G @ 25°C /5
SENSITIVITY	4.90	5.0	5.10	mV/g	@ 8.0 V <sub>S</sub> & 25°C
LINEARITY	-1.5	-8	0	% OF SPAN	DEV FROM STR LINE THRU -500 AND +500
V <sub>OUT</sub> @ 0 GAUSS	3.960	4.000	4.040	VOLTS	25°C
TEMP ERROR-NULL	-.01		+.01	%/°C	-40°C TO +125°C
TEMP ERROR-GAIN	-.02		+.02	%/°C	-40°C TO +125°C



**BLOCK DIAGRAM CURRENT SINKING OR SOURCING OUTPUT**



- NOTES**
- 1 CENTERLINE OF HALL CELL (IC) ONLY. THE LOCATION OF THE CERAMIC COVER IS NOT SPECIFIED
  - 2 THE + MAGNETIC FLUX IS IN THIS DIRECTION (THIS ASSUMES THE CONVENTION THAT THE DIRECTION OF THE EXTERNAL FLUX OF A MAGNET IS FROM THE NORTH TO THE SOUTH POLE OF THE MAGNET)
  - 3 - THE DEVICE CANNOT BE DAMAGED BY MAGNETIC OVERDRIVE
  - 4 - OUTPUT TYPE - RATIOMETRIC
  - 5 THE OUTPUT IS CLAMPED AT 9.0 VDC MINIMUM, 9.5 VDC TYPICAL
  - 6 ARTWORK TYPICAL

THIRD ANGLE PROJECTION  
 SCALE 5 : 1  
 DO NOT SCALE PRINT  
**UNLESS OTHERWISE SPECIFIED TOLERANCES ARE**  
 ONE PLACE (.0) ±.030  
 TWO PLACE (.00) ±.015  
 THREE PLACE (.000) ±.005  
 ANGLES ±  
 WEIGHT

