

CATALOG LISTING SS94A2D PAGE 1 OF 1
 ISSUE 6
 REVISIONS
 A 0072441 18 MAY 92
 B 0073769 19 MAY 92
 C 0074704 19 MAY 92
 D 0038690 18 JAN 89
 E 0038511 19 MAY 92
 T M M 18 JAN 89
 RASTER DRAWN

MICRO SWITCH
a Honeywell Division
FED. MFG. CODE 9129

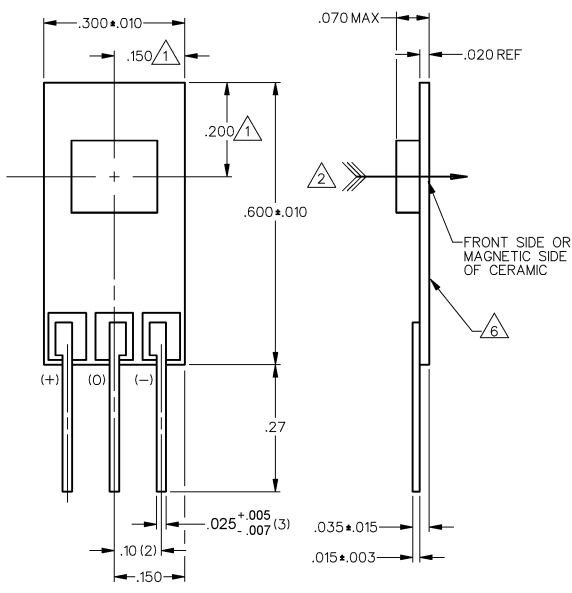
LINEAR OUTPUT HALL EFFECT TRANSDUCER

CATALOG LISTING
SS94A2D

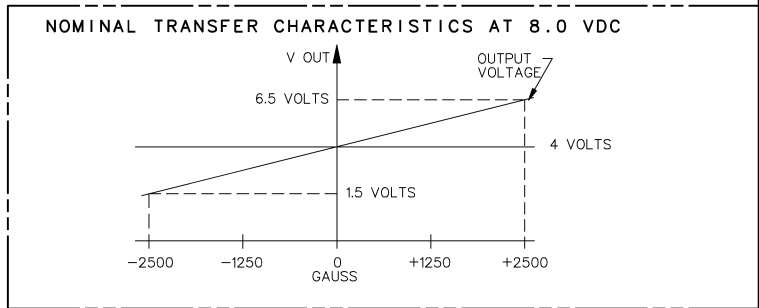
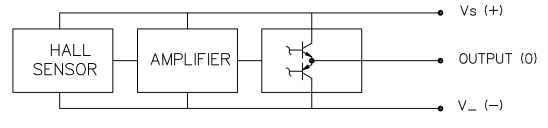
THIS DRAWING COVERS A PROPRIETARY ITEM AND IS THE PROPERTY OF MICRO SWITCH, A DIVISION OF HONEYWELL. THIS DRAWING IS NOT TO BE COPIED OR USED WITHOUT THE APPROVAL OF MICRO SWITCH

OPERATING CHARACTERISTICS

| PARAMETER | MIN | TYP | MAX | UNITS | CONDITIONS/REMARKS |
|----------------------------|-------|---------------------|-------|-----------|--|
| SUPPLY VOLTAGE | 6.6 | 8.0 | 12.6 | VOLTS | -40°C TO +125°C |
| SUPPLY CURRENT | | 13 | 30 | mA | MAX @ 12.6 V @ -40°C |
| OUTPUT CURRENT | | | 1 | mA | SINKING OR SOURCING |
| OUTPUT SPAN | | .625 V _S | | VOLTS | -2500G TO +2500G @ 25°C /5 |
| SENSITIVITY | .98 | 1.00 | 1.02 | mV/g | @ 8.0 V _S & 25°C |
| LINEARITY | -1.5 | -8 | 0 | % OF SPAN | DEV FROM STR LINE THRU -2500 AND +2500 |
| V _{OUT} @ 0 GAUSS | 3.960 | 4.000 | 4.040 | VOLTS | 25°C |
| TEMP ERROR-NULL | -0.07 | | +0.07 | %/°C | -40°C TO +125°C |
| TEMP ERROR-GAIN | -0.2 | | +0.2 | %/°C | -40°C TO +125°C |



BLOCK DIAGRAM CURRENT SINKING OR SOURCING OUTPUT



- NOTES**
- 1 CENTERLINE OF HALL CELL (IC) ONLY.
 - 2 THE LOCATION OF THE CERAMIC COVER IS NOT SPECIFIED
 - 3 THE + MAGNETIC FLUX IS IN THIS DIRECTION (THIS ASSUMES THE CONVENTION THAT THE DIRECTION OF THE EXTERNAL FLUX OF A MAGNET IS FROM THE NORTH TO THE SOUTH POLE OF THE MAGNET)
 - 4 THE DEVICE CANNOT BE DAMAGED BY MAGNETIC OVERDRIVE
 - 5 - OUTPUT TYPE - RATIO-METRIC
 - 6 THE OUTPUT IS CLAMPED AT 9.0 VDC MINIMUM, 9.5 VDC TYPICAL THIS SIDE COATED WITH CONDUCTIVE MATERIAL WHICH IS ELECTRICALLY CONNECTED TO (-) TERMINAL

THIRD ANGLE PROJECTION

SCALE 5 : 1

DO NOT SCALE PRINT

UNLESS OTHERWISE SPECIFIED TOLERANCES ARE

| | |
|-------------|---------------|
| ONE PLACE | (.0) ± .030 |
| TWO PLACE | (.00) ± .015 |
| THREE PLACE | (.000) ± .005 |
| ANGLES | ± |

ESD SENSITIVITY: CLASS 3

WEIGHT

ANSI Y14.5M-1982 APPLIES