

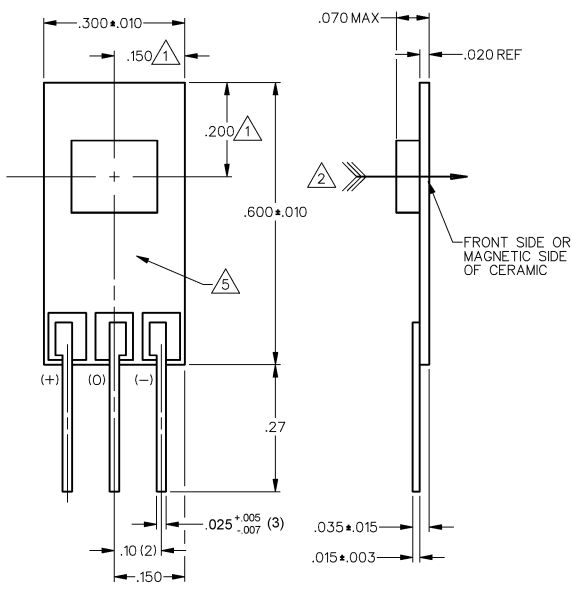
CATALOG LISTING
SS94A1F
 PAGE 1 OF 1
 ISSUE 10
 REVISIONS
 A C066416 K A F 21 SEP 89
 B C066822 J A F 21 FEB 90
 C C072441 J A F 30 MAY 92
 D C073280 J A F 11 AUG 92
 E C075573 J A F 12 FEB 93
 F C076360 J A F 30 AUG 93
 G C076704 J A F 21 MAR 00
 H C038954 J A F 1 APR 00
 I C038951 J A F 1 APR 00
 J A S 9 AUG 89
 K A G B AUG 89
 L A G B AUG 89
 M A G B AUG 89
 N A G B AUG 89
 O A G B AUG 89
 P A G B AUG 89
 Q A G B AUG 89
 R A G B AUG 89
 S A G B AUG 89
 T A G B AUG 89
 U A G B AUG 89
 V A G B AUG 89
 W A G B AUG 89
 X A G B AUG 89
 Y A G B AUG 89
 Z A G B AUG 89
 RASTER DRAWN

MICRO SWITCH
 a Honeywell Division
 FED. MFG. CODE 91224

LINEAR OUTPUT HALL EFFECT TRANSDUCER

CATALOG LISTING
SS94A1F

THIS DRAWING COVERS A PROPRIETARY ITEM AND IS THE PROPERTY OF MICRO SWITCH, A DIVISION OF HONEYWELL. THIS DRAWING IS NOT TO BE COPIED OR USED WITHOUT THE APPROVAL OF MICRO SWITCH



SPECIFICATIONS 6

| PARAMETER | CONDITIONS | MIN | TYP | MAX | UNITS |
|---------------------------------|---|------|------|-------------|-----------|
| SENSITIVITY | TA = 25°C | 24.5 | 25.0 | 25.5 | mV/GAUSS |
| NULL | TA = 25°C | 3.92 | 4.00 | 4.08 | VOLTS |
| SUPPLY CURRENT | TA = 25°C | | 13 | 20 | mA |
| OUTPUT CURRENT (SINK OR SOURCE) | | 1.0 | 2.0 | | mA |
| OUTPUT VOLTAGE SWING | | | | | |
| VOM - | -B APPLIED | 1.2 | 1.1 | | VOLTS |
| VOM + | 7 +B APPLIED Vs -1.0 Vs -.9 | | | | VOLTS |
| B LIMITS FOR LINEAR OPERATION | -B MAX | -100 | -115 | | GAUSS |
| | +B MAX | +100 | +115 | | GAUSS |
| Vnull DRIFT | B = 0 | | | ±10 | %/°C |
| SENSITIVITY DRIFT | | | | +0.2/-0.055 | %/°C |
| LINEARITY | -B MAX T +B MAX | -1.5 | -.8 | 0 | % OF SPAN |
| SUPPLY VOLTAGE | | 6.6 | | 12.6 | VOLTS |

- NOTES
- 1 CENTERLINE OF HALL CELL (IC) ONLY. THE LOCATION OF THE CERAMIC COVER IS NOT SPECIFIED
 - 2 THE + MAGNETIC FLUX IS IN THIS DIRECTION (THIS ASSUMES THE CONVENTION THAT THE DIRECTION OF THE EXTERNAL FLUX OF A MAGNET IS FROM THE NORTH TO THE SOUTH POLE OF THE MAGNET)
 - 3 - THE DEVICE CANNOT BE DAMAGED BY MAGNETIC OVERDRIVE
 - 4 - OUTPUT TYPE - RATIO METRIC
 - 5 ARTWORK IS TYPICAL
 - 6 ALL CHARACTERISTICS ARE -40°C TO 125°C UNLESS OTHERWISE STATED WITH Vs = 8.000 VDC
 - 7 THE OUTPUT IS CLAMPED AT 9.0 VDC MINIMUM, 9.5 VDC TYPICAL

ANSI Y14.5M-1982 APPLIES



THIRD ANGLE PROJECTION

SCALE 5 : 1

DO NOT SCALE PRINT

UNLESS OTHERWISE SPECIFIED TOLERANCES ARE

| | |
|-------------|---------------|
| ONE PLACE | (.0) ± .030 |
| TWO PLACE | (.00) ± .015 |
| THREE PLACE | (.000) ± .005 |
| ANGLES | ± |

WEIGHT